

ENID, OKLAHOMA

# RNAV (GPS) RWY 17C

WAAAS Chan <b>89616</b> <b>W17A</b>	APCH CRS <b>175°</b>	Rwy Idg <b>9217</b> TDZE <b>1277</b> Arprt Elev <b>1307</b>
---	-------------------------	---

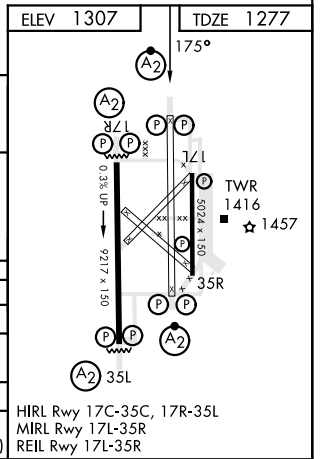
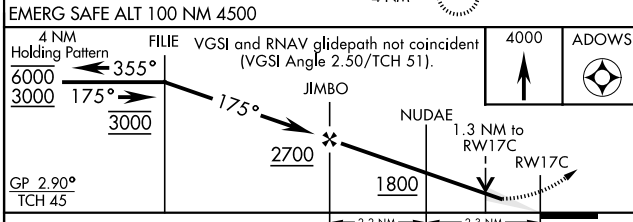
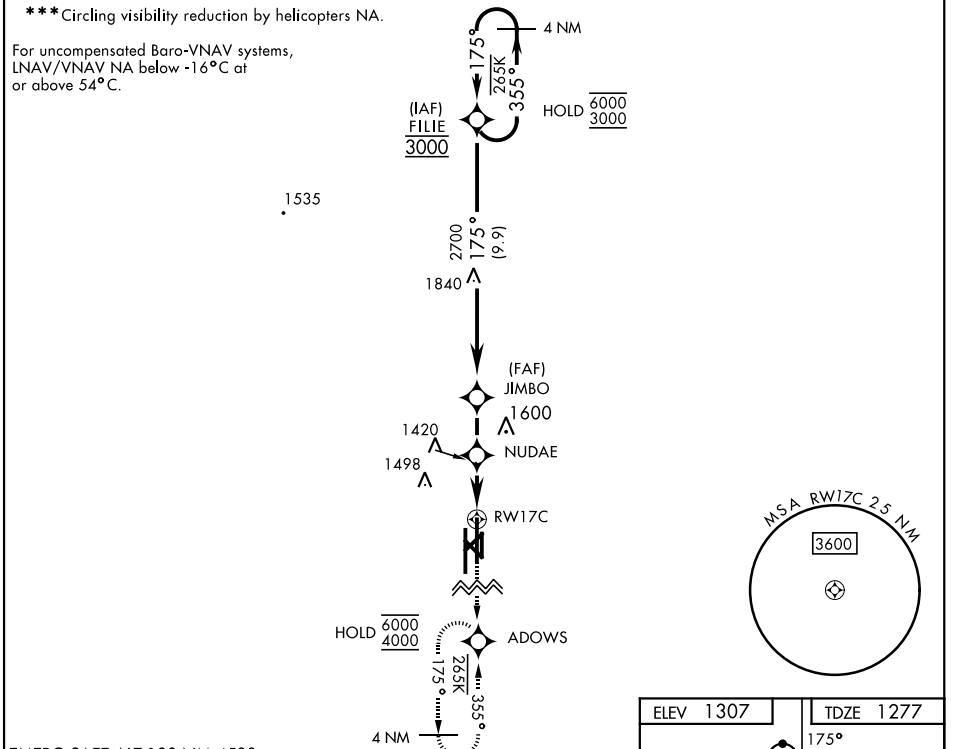
AL-135 [USAF]

VANCE AFB (KEND)

RNP APCH	SALSF <b>(A2)</b>	MISSED APPROACH: Climb to 4000 direct ADOWS and hold.
----------	----------------------	---

\* When ALS inop, increase RVR to 45, vis to 7/8 miles.  
 \*\* When ALS inop, increase CAT AB RVR to 55 and vis to 1 mile, CAT CDE RVR to 60 and vis to 1 1/2 miles.

ATIS ★ <b>115.4 263.15</b>	APP CON <b>125.45 388.2</b> (E) <b>126.75 346.325</b> (W)	TOWER ★ <b>124.05 259.1</b>	GND CON <b>121.675 289.4</b>	CLNC DEL <b>225.4</b>
-------------------------------	---	--------------------------------	---------------------------------	--------------------------



CATEGORY	A	B	C	D	E
LPV DA	1477/40		200	(200-34)	
LNAV/VNAV DA *	1567/40		290	(300-34)	
LNAV MDA **	1680/40	403 (400-34)	1680/50	403 (400-1)	
*** CIRCLING	1760-1	453 (500-1)	1800-1 1/2 493 (500-1 1/2)	1900-2 593 (600-2)	2300-3 993 (1000-3)

ENID, OKLAHOMA  
Amdt 10 01DEC22

36°20'N-97°55'W

VANCE AFB (KEND)

# RNAV (GPS) RWY 17C

SC-1, 18 APR 2024 to 16 MAY 2024

SC-1, 18 APR 2024 to 16 MAY 2024