

ENID, OKLAHOMA

RNAV (GPS) RWY 17L

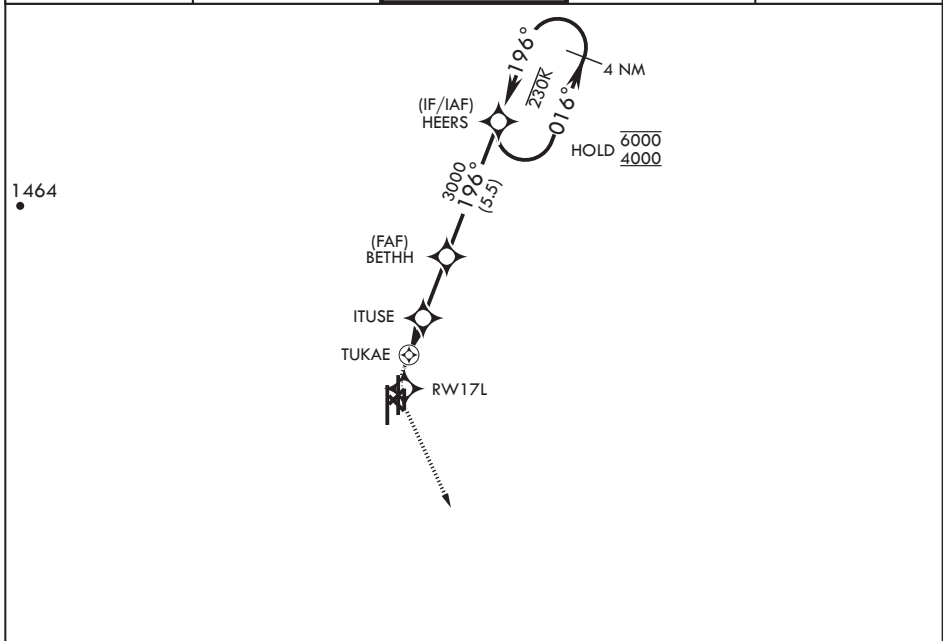
APCH CRS	Rwy Idg	5024
196°	TDZE	1282
	Arprt Elev	1307

AL-135 (USAF)

VANCE AFB (KEND)

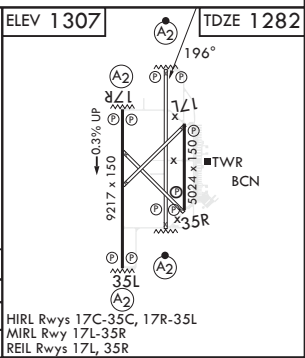
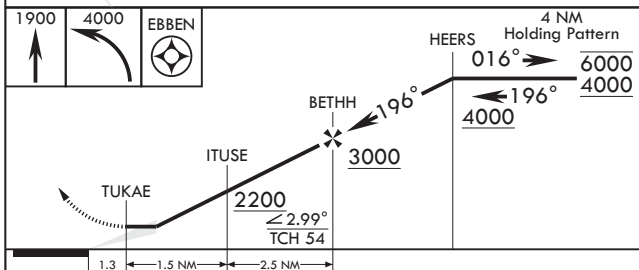
RNP APCH	MISSED APPROACH: Climb to 1900 then climbing left turn to 4000 direct EBBEN and hold.
Circling Visibility Reduction by Helicopters NA.	

ATIS* 115.4 263.15	APP CON 125.45 388.2 (E) 126.75 346.325 (W)	TOWER* 124.05 259.1	GND CON 121.675 289.4	CLNC DEL 225.4
-----------------------	---	------------------------	--------------------------	-------------------



FOR USE BY 71 FTW AIRCRAFT ONLY

EMERG SAFE ALT 100 NM 4500



CATEGORY	A	B	C	D
LNAV MDA	1720-1½	438 (500-1½)	NA	NA
CIRCLING	1760-1½	453 (500-1½)	NA	NA

ELEV 1307 TDZE 1282

HIRL Rwy 17C-35C, 17R-35L
MIRL Rwy 17L-35R
REIL Rwy 17L, 35R

ENID, OKLAHOMA

36°20'N - 97°55'W

VANCE AFB (KEND)

Orig 24MAR22
TERPS

RNAV (GPS) RWY 17L

SC-1, 18 APR 2024 to 16 MAY 2024

SC-1, 18 APR 2024 to 16 MAY 2024