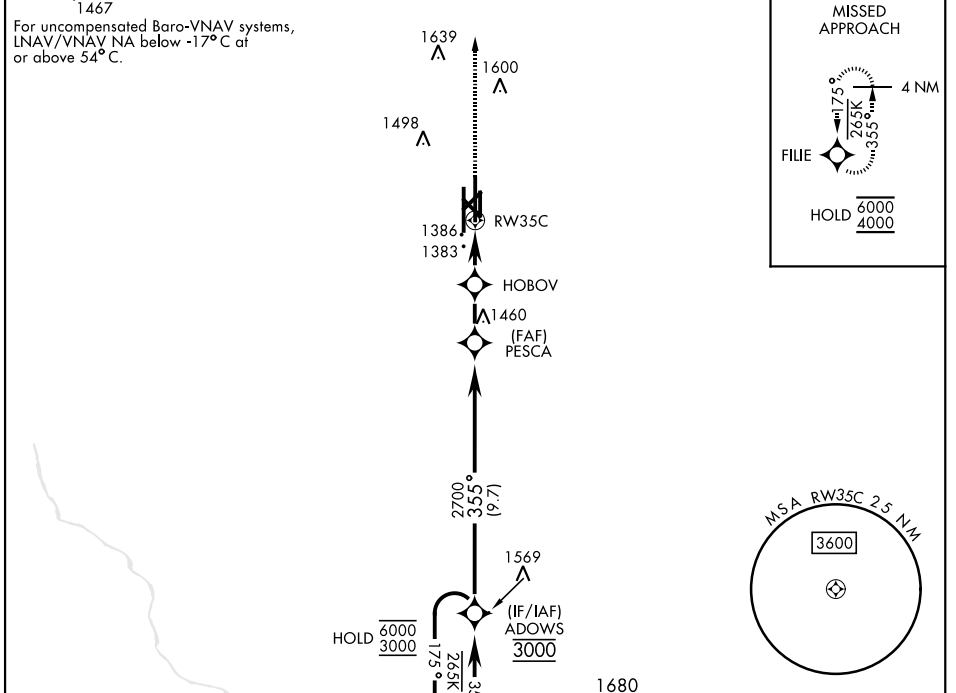


# RNAV (GPS) RWY 35C

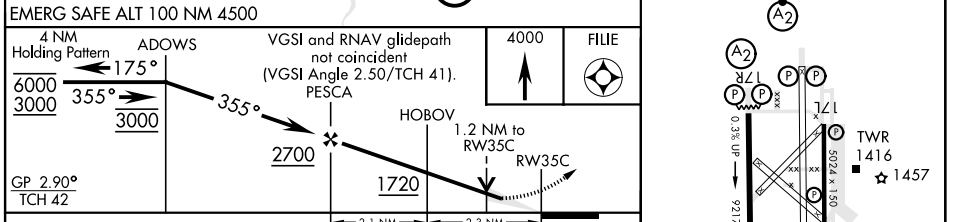
WAAAS Chan <b>84880</b> <b>W35A</b>	APCH CRS <b>355°</b>	Rwy Idg <b>9217</b> TDZE <b>1293</b> Arprt Elev <b>1307</b>	AL-135 [USAF]	VANCE AFB (KEND)
---	-------------------------	---	---------------	------------------

RNP APCH	SALS <b>(A2)</b>	MISSED APPROACH: Climb to 4000 direct FILE and hold.
----------	---------------------	--

ATIS ★ <b>115.4 263.15</b>	APP CON <b>125.45 388.2</b> (E) <b>126.75 346.325</b> (W)	TOWER ★ <b>124.05 259.1</b>	GND CON <b>121.675 289.4</b>	CLNC DEL <b>225.4</b>
-------------------------------	---	--------------------------------	---------------------------------	--------------------------



ELEV 1307	TDZE 1293
-----------	-----------



CATEGORY	A	B	C	D	E
LPV DA	1543/40		250	(300-34)	
LNAV/VNAV DA *	1568/40	275	(300-34)		1581/40 288 (300-34)
LNAV MDA **	1660/40		367	(400-34)	
*** CIRCLING	1760-1 453 (500-1)	1800-1½ 493 (500-1½)	1900-2 593 (600-2)	2300-3 993 (1000-3)	

HIRL Rwy 17C-35C, 17R-35L  
MIRL Rwy 17L-35R  
REIL Rwy 17L-35R

# RNAV (GPS) RWY 35C

SC-1, 18 APR 2024 to 16 MAY 2024

SC-1, 18 APR 2024 to 16 MAY 2024