

ENID, OKLAHOMA

RNAV (GPS) RWY 35R

APCH CRS	Rwy Idg	5024
342°	TDZE	1284
	Arprt Elev	1307

AL-135 (USAF)

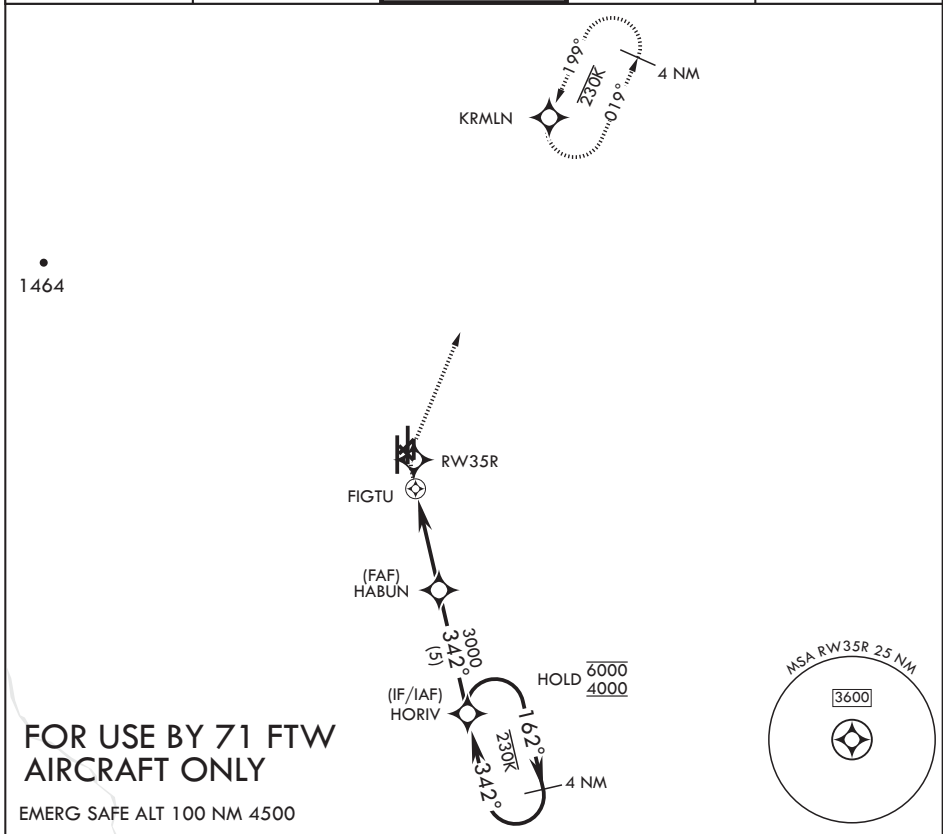
VANCE AFB (KEND)

RNP APCH

MISSED APPROACH: Climb to 1900 then climbing right turn to 4000 direct KRMLN and hold.

⚠ LNAV Visibility Reduction by Helicopters NA.

ATIS ★ 115.4 263.15	APP CON 125.45 388.2 (E) 126.75 346.325 (W)	TOWER ★ 124.05 259.1	GND CON 121.675 289.4	CLNC DEL 225.4
------------------------	---	-------------------------	--------------------------	-------------------



FOR USE BY 71 FTW AIRCRAFT ONLY

EMERG SAFE ALT 100 NM 4500

1900	4000	KRMLN	ELEV 1307	TDZE 1284
CATEGORY	A	B	C	D
LNAV MDA	1720-1%	436 (500-1%)	NA	NA
CIRCLING	1760-1%	453 (500-1%)	NA	NA

HIRL Rwy 17C-35C, 17R-35L
MIRL Rwy 17L-35R
REIL Rwy 17L, 35R

ENID, OKLAHOMA

36°20'N - 97°55'W

VANCE AFB (KEND)

Orig 24MAR22
TERPS

RNAV (GPS) RWY 35R

SC-1, 18 APR 2024 to 16 MAY 2024

SC-1, 18 APR 2024 to 16 MAY 2024