

RNAV (GPS) Y RWY 17R

APCH CRS	Rwy Idg	9217
163°	TDZE	1287
	Arpt Elev	1307

AL-135 [USAF]

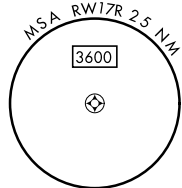
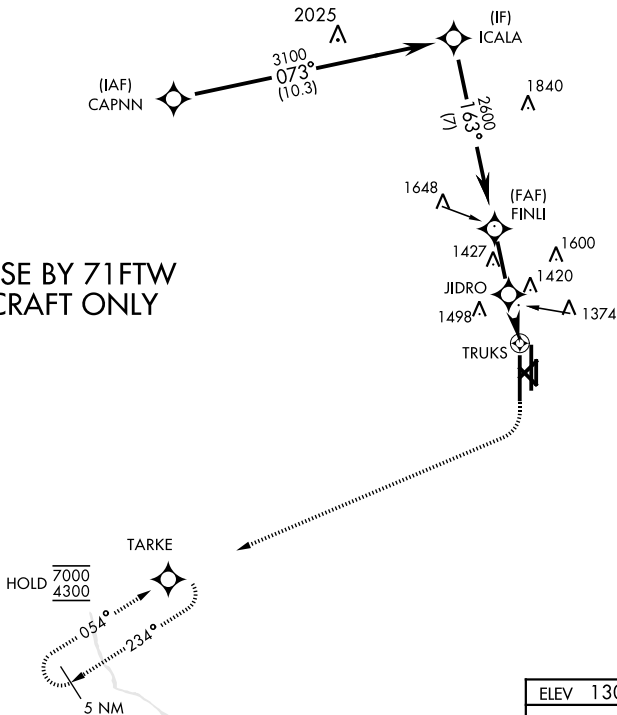
VANCE AFB (KEND)

RNP APCH	SALS
RADAR required	(A2)
* When ALS inop, increase vis to 1 mile. Circling visibility reduction by helicopters not authorized.	

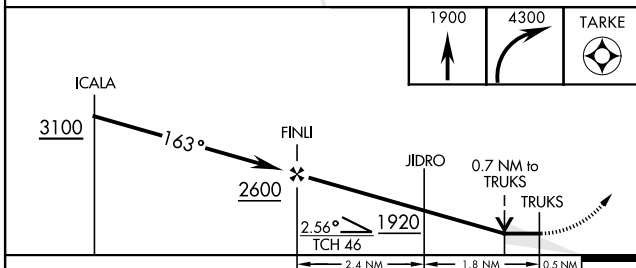
MISSED APPROACH: Climb to 1900, then climbing right turn to 4300 direct TARKE and hold.

ATIS ★	APP CON	TOWER ★	GND CON	CLNC DEL
115.4 263.15	125.45 388.2 (E) 126.75 346.325 (W)	124.05 259.1	121.675 289.4	225.4

FOR USE BY 71FTW AIRCRAFT ONLY



EMERG SAFE ALT 100 NM 4500



ELEV 1307	TDZE 1287
-----------	-----------

35L	35R
-----	-----

HIRL Rwy 17C-35C, 17R-35L
MIRL Rwy 17L-35R
REIL Rwy 17L-35R

CATEGORY	A	B	C	D	E
LNAV MDA *	1640-3/4		353	(400-3/4)	
CIRCLING	1760-1 453 (500-1)	1800-1 1/2 493 (500-1 1/2)	1900-2 593 (600-2)	2300-3 993 (1000-3)	

RNAV (GPS) Y RWY 17R

SC-1, 18 APR 2024 to 16 MAY 2024

SC-1, 18 APR 2024 to 16 MAY 2024