

ENID, OKLAHOMA

VOR/DME or TACAN RWY 17C

VORTAC END 115.4 Chan 101	APCH CRS 182°	Rwy Idg 9217 TDZE 1277 Arprt Elev 1307
---	-------------------------	---

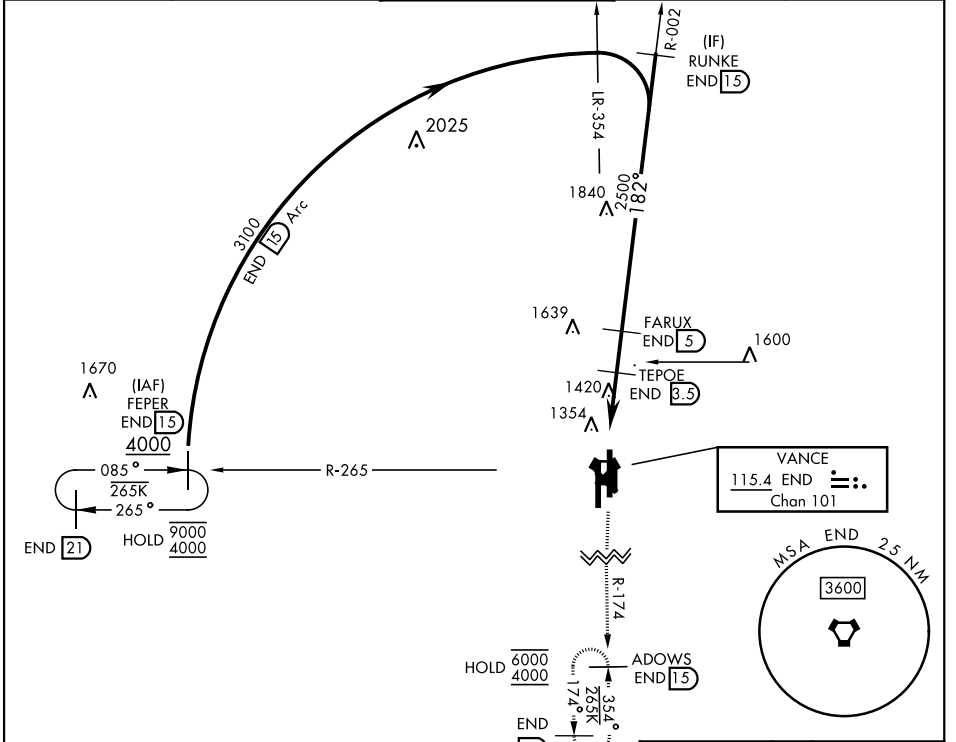
AL-135 [USAF]

VANCE AFB (KEND)

▼ * When ALS inop, increase CAT AB RVR to 55 and vis to 1 mile, CAT CDE RVR to 60 and vis to 1/8 miles.

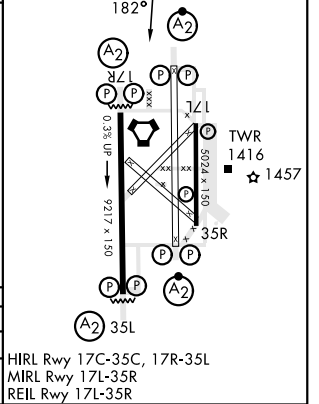
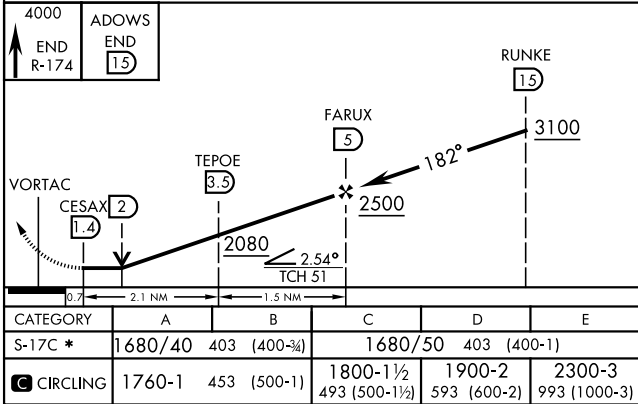
SALSF (A2) MISSED APPROACH: Climb to 4000, intercept END VORTAC R-174 to ADOWS and hold.

ATIS ★ 115.4 263.15	APP CON 125.45 388.2 EAST 126.75 346.325 WEST	TOWER ★ 124.05 259.1	GND CON 121.675 289.4	CLNC DEL 225.4
-------------------------------	---	--------------------------------	---------------------------------	--------------------------



EMERG SAFE ALT 100 NM 4500

ELEV 1307 TDZE 1277



ENID, OKLAHOMA 36° 20' N-97° 55' W VANCE AFB (KEND)

Amtd 5 24FEB22

VOR/DME or TACAN RWY 17C

SC-1, 18 APR 2024 to 16 MAY 2024

SC-1, 18 APR 2024 to 16 MAY 2024