


ENID, OKLAHOMA

# VOR/DME or TACAN RWY 35C

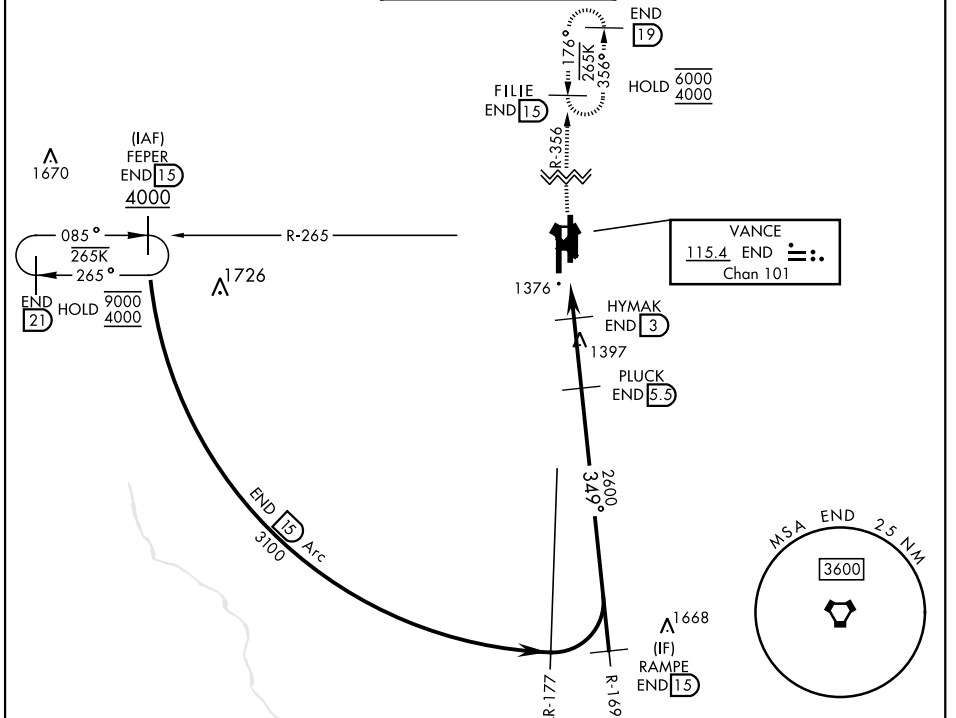
VORTAC END <b>115.4</b> Chan <b>101</b>	APCH CRS <b>349°</b>	Rwy Idg <b>9217</b> TDZE <b>1293</b> Arprt Elev <b>1307</b>
---	-------------------------	---

AL-135 [USAF]

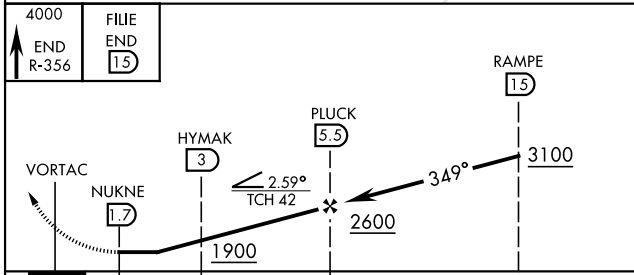
VANCE AFB (KEND)

<b>▽</b> * When ALS inop, increase RVR to 55, vis to 1 mile. 	MISSED APPROACH: Climb to 4000, intercept END VORTAC R-356 to FILIE and hold.			
---	--	--	--	--

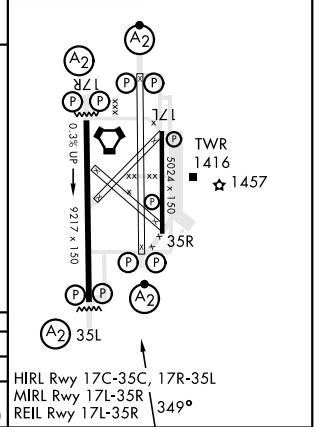
ATIS ★ <b>115.4 263.15</b>	APP CON <b>125.45 388.2 EAST</b> <b>126.75 346.325 WEST</b>	TOWER ★ <b>124.05 259.1</b>	GND CON <b>121.675 289.4</b>	CLNC DEL <b>225.4</b>
-------------------------------	---	--------------------------------	---------------------------------	--------------------------



EMERG SAFE ALT 100 NM 4500



ELEV 1307	TDZE 1293
-----------	-----------



CATEGORY	A	B	C	D	E
S-35C *	1660/40		367	(400-34)	
<b>C</b> CIRCLING	1760-1	453 (500-1)	1800-1½ 493 (500-1½)	1900-2 593 (600-2)	2300-3 993 (1000-3)

ENID, OKLAHOMA  
Amdt 5 24FEB22

36°20'N-97°55'W

VANCE AFB (KEND)

# VOR/DME or TACAN RWY 35C

SC-1, 18 APR 2024 to 16 MAY 2024

SC-1, 18 APR 2024 to 16 MAY 2024