

RNAV (GPS) RWY 15

APCH CRS	Rwy Idg	4853
151°	TDZE	754
	Arprt Elev	754

AL-151 [USA]

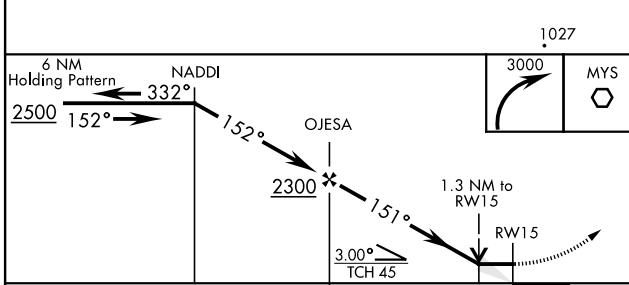
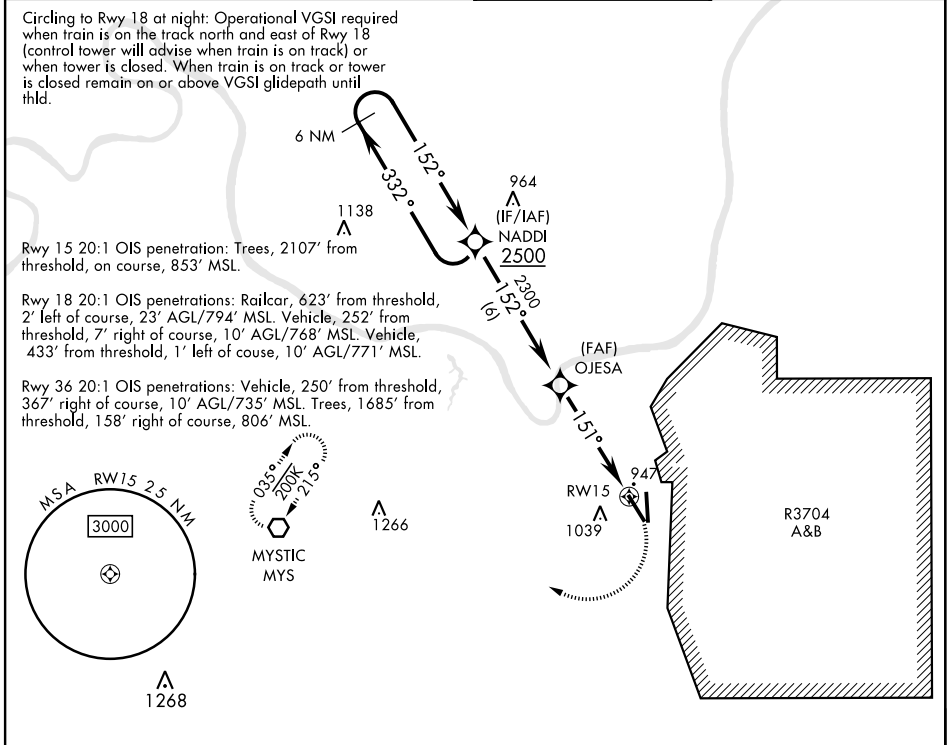
GODMAN AAF (KFTK)

RNP APCH - GPS

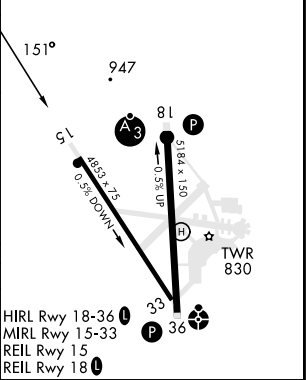
▼ *Straight-in minimums NA at night. Helicopter visibility reduction below 1 mile NA.
 ** Circling not authorized E of Rwy 18-36. When circling to Rwy 36 at night, operational VGSI required, remain on or above VGSI glidepath until threshold.

MISSED APPROACH: Climbing right turn to 3000 direct MYS VOR and hold.

ATIS 109.6	LOUISVILLE APP CON 132.075 327.0	TOWER★ 133.35 (CTAF) 0	GND CON 121.9 239.3
----------------------	--	----------------------------------	-------------------------------



ELEV	754	TDZE	754
------	-----	------	-----



CATEGORY	A	B	C	D
RNAV MDA*	1260-1	506 (600-1)	1260-1 3/8	506 (600-1 3/8)
CIRCLING**	1340-1	586 (600-1)	1340-1 1/2	1340-2 586 (600-2)

RNAV (GPS) RWY 15

SE-1, 18 APR 2024 to 16 MAY 2024

SE-1, 18 APR 2024 to 16 MAY 2024