

APCH CRS	Rwy Idg	5184
180°	TDZE	754
	Arprt Elev	754

[USA]

GODMAN AAF (KFKT)

RNP APCH - GPS



MISSED APPROACH: Climbing right to 2600, direct to NADDI and hold.

▼ *Circling not authorized E of Rwy 18-36. When circling to Rwy 36 at night, operational VGSJ required, remain on or above VGSJ glidepath until thld. Circling to Rwy 15 not authorized at night.

ATIS	LOUISVILLE APP CON	TOWER ★	GND CON
109.6	132.075 327.0	133.35 (CTAF) 0	121.9 239.3

Helicopter visibility reduction below 1 SM NA.

Procedure NA for arrivals at MAIZE via V171 NW bound.

(IAF) MAIZE 1020

Rwy 15 20:1 Obstacle Identification Surface penetration: Trees, 2107' from thld, on course, 853' MSL.

Rwy 18 20:1 Obstacle Identification Surface penetrations:
Railcar, 623' from thld, 2' left of course, 23' AGL/794' MSL.
Vehicle, 252' from thld, 7' right of course, 10' AGL/768' MSL.
Vehicle, 433' from thld, 1' left of course, 10' AGL/771' MSL.

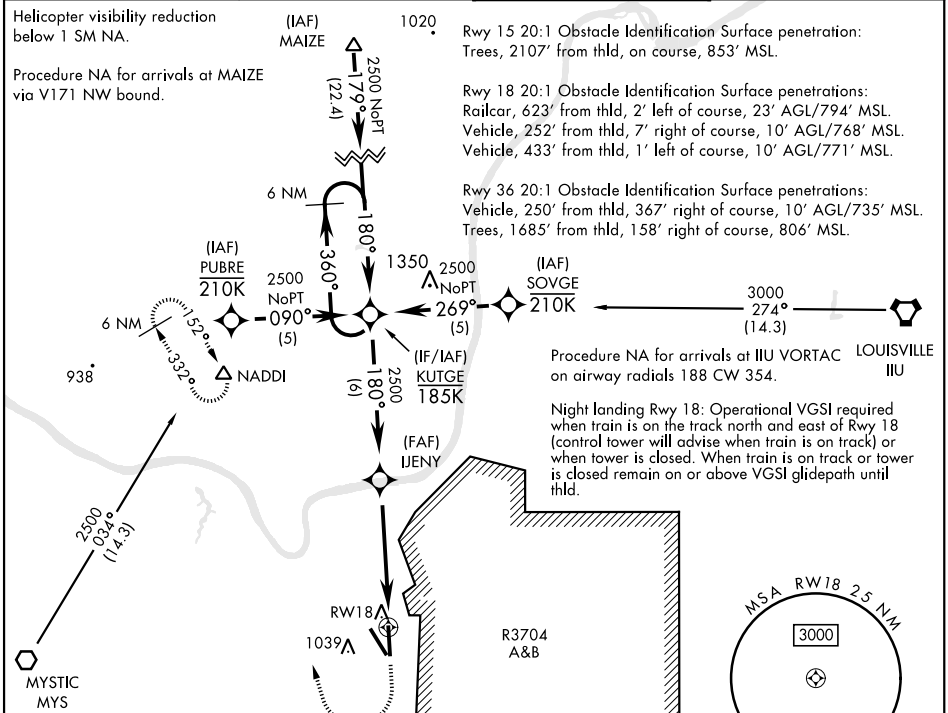
Rwy 36 20:1 Obstacle Identification Surface penetrations:
Vehicle, 250' from thld, 367' right of course, 10' AGL/735' MSL.
Trees, 1685' from thld, 158' right of course, 806' MSL.

Procedure NA for arrivals at IJU VORTAC on airway radials 188 CW 354.

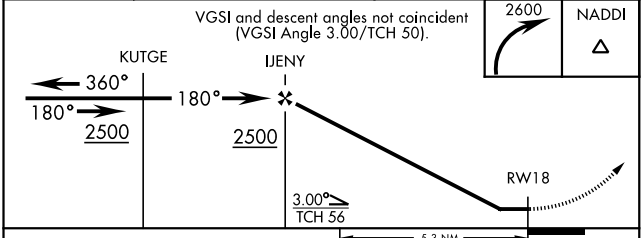
Night landing Rwy 18: Operational VGSJ required when train is on the track north and east of Rwy 18 (control tower will advise when train is on track) or when tower is closed. When train is on track or tower is closed remain on or above VGSJ glidepath until thld.

SE-1, 18 APR 2024 to 16 MAY 2024

SE-1, 18 APR 2024 to 16 MAY 2024



ELEV	754	TDZE	754
HIRL Rwy 18-36	180°		
MIRL Rwy 15-33			
REIL Rwy 15			
REIL Rwy 18			



CATEGORY	A	B	C	D
LNAV MDA	1260-1	506 (600-1)	1260-1½ 506 (600-1½)	1260-1½ 506 (600-1½)
C CIRCLING*	1340-1	586 (600-1)	1340-1½ 586 (600-1½)	1340-2 586 (600-2)