

# RNAV (GPS) RWY 36

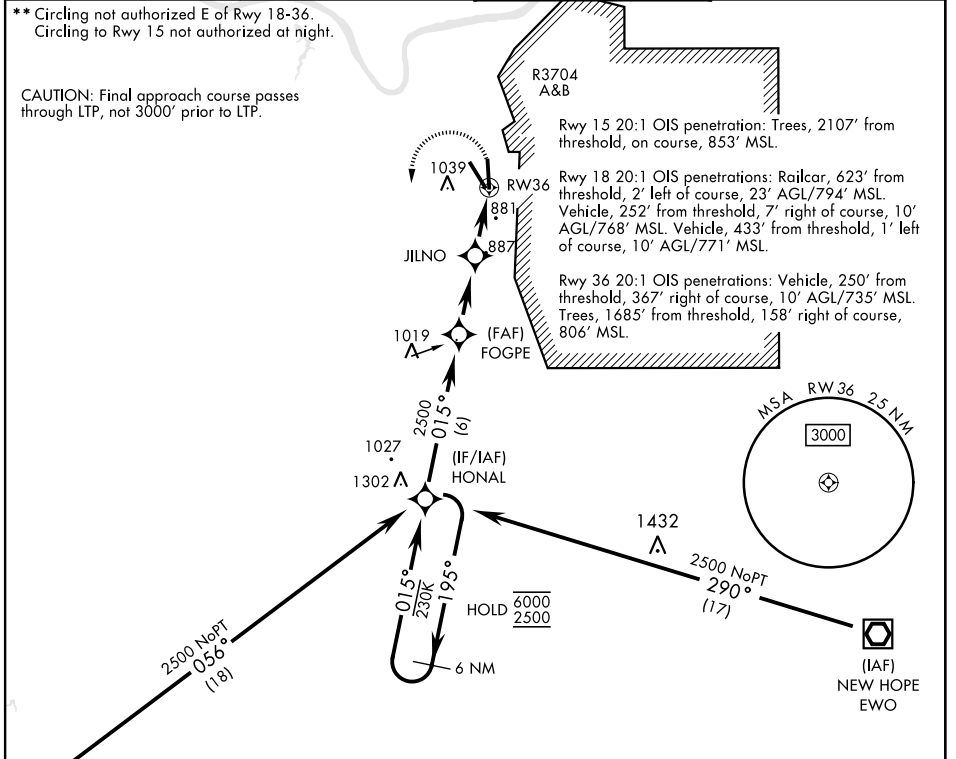
APCH CRS	Rwy Idg	5184
015°	TDZE	740
	Arprt Elev	754

AL-151 [USA]

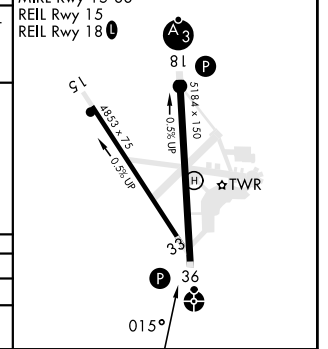
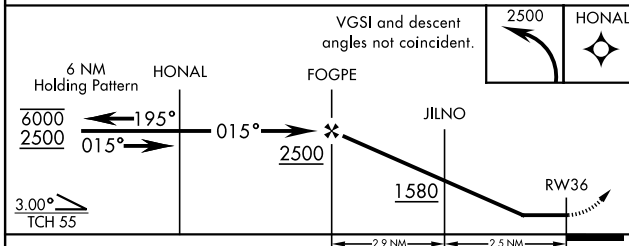
GODMAN AAF (KF TK)

RNP APCH - GPS	ODALS	MISSED APPROACH: Climbing left turn to 2500 direct HONAL and hold.
<p>▼ * Straight-in Rwy 36 at night, operational VGSI required, remain on or above VGSI glidepath until threshold. When ALS inop, increase CAT CD vis to 1½ miles. Helicopter visibility reduction below 1 mile NA.</p>		

ATIS <b>109.6</b>	LOUISVILLE APP CON <b>132.075 327.0</b>	TOWER ★ <b>133.35 (CTAF) 0</b>	GND CON <b>121.9 239.3</b>
----------------------	--	-----------------------------------	-------------------------------



ELEV	754	TDZE	740
HIRL Rwy 18-36			
MIRL Rwy 15-33			
REIL Rwy 15			
REIL Rwy 18			



CATEGORY	A	B	C	D
LNAV MDA*	1240-1	500 (500-1)	1240-1¼	500 (500-1¼)
CIRCLING**	1340-1	586 (600-1)	1340-1½ 586 (600-1½)	1340-2 586 (600-2)

# RNAV (GPS) RWY 36

SE-1, 18 APR 2024 to 16 MAY 2024

SE-1, 18 APR 2024 to 16 MAY 2024