

FORT KNOX, KENTUCKY

# VOR/DME RWY 36

VOR/DME FTK <b>109.6</b> Chan <b>33</b>	APCH CRS <b>349°</b>	Rwy ldg TDZE <b>5184</b> <b>740</b> Arprt Elev <b>754</b>
---	-------------------------	--

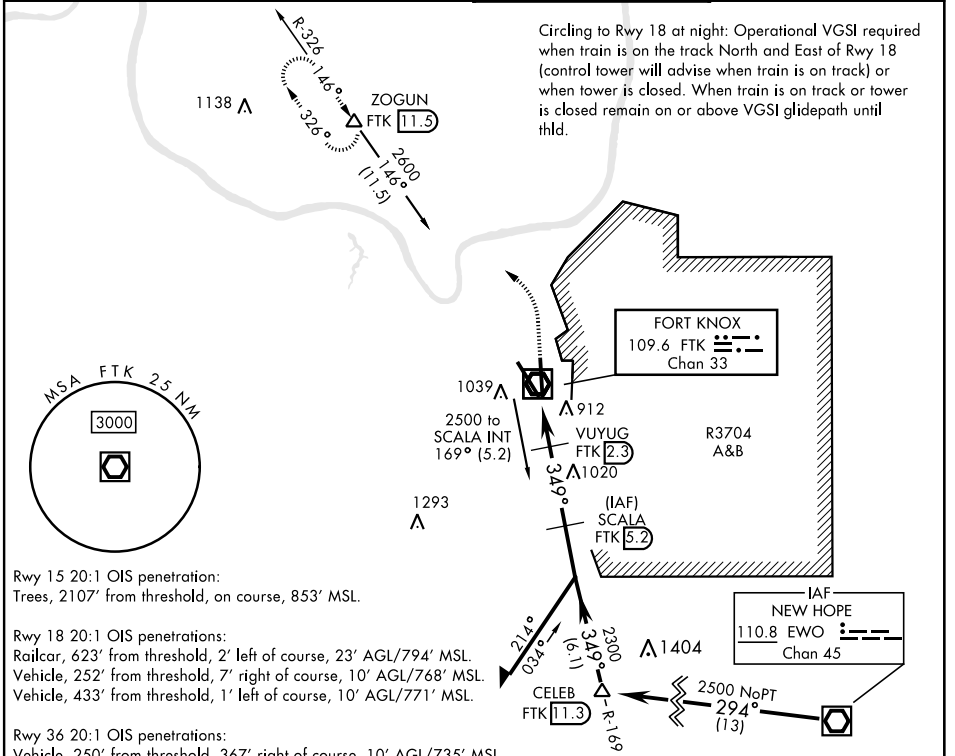
AL-151 [USA]

GODMAN AAF (KF TK)

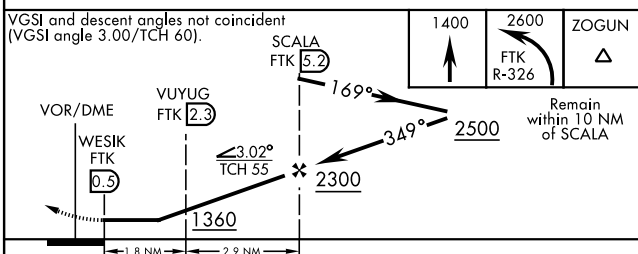
▼ \* At night, operational VGS I required, remain on or above VGS I glidepath until threshold.  
 Visibility reduction by helicopters not authorized.  
 \*\* Circling NA E of Rwy 18-36. Circling to rwy 15 NA at night.

ODALS  
 MISSED APPROACH: Climb to 1400, then climbing left turn to 2600 on FTK VOR/DME R-326 to ZOGUN INT/FTK 11.5 DME and hold.

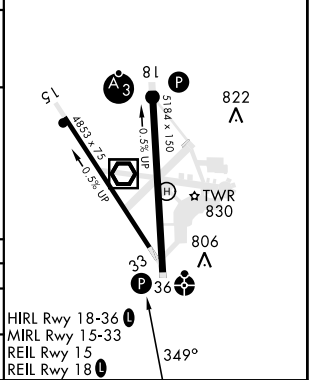
ATIS <b>109.6</b>	LOUISVILLE APP CON <b>132.075 327.0</b>	TOWER ★ <b>133.35</b> (CTAF) <b>0</b>	GND CON <b>121.9 239.3</b>
----------------------	--	--	-------------------------------



- Rwy 15 20:1 OIS penetration:  
 Trees, 2107' from threshold, on course, 853' MSL.
- Rwy 18 20:1 OIS penetrations:  
 Railcar, 623' from threshold, 2' left of course, 23' AGL/794' MSL.  
 Vehicle, 252' from threshold, 7' right of course, 10' AGL/768' MSL.  
 Vehicle, 433' from threshold, 1' left of course, 10' AGL/771' MSL.
- Rwy 36 20:1 OIS penetrations:  
 Vehicle, 250' from threshold, 367' right of course, 10' AGL/735' MSL.  
 Trees, 1685' from threshold, 158' right of course, 806' MSL.



ELEV <b>754</b>	TDZE <b>740</b>
-----------------	-----------------



CATEGORY	A	B	C	D
S-36*	1180-1 440 (500-1)		1180-1¼ 440 (500-1¼)	
CIRCLING**	1340-1 586 (600-1)		1340-1½ 586 (600-1½)	1340-2 586 (600-2)

FORT KNOX, KENTUCKY 37°54'N-85°58'W GODMAN AAF (KF TK)

Am d 2 10AUG23

# VOR/DME RWY 36

SE-1, 18 APR 2024 to 16 MAY 2024

SE-1, 18 APR 2024 to 16 MAY 2024