

LOC/DME I-LLG 109.55 Chan 32(Y)	APP CRS 054°	Rwy Idg TDZE 916 Apt Elev 926	9000
--	------------------------	---	-------------

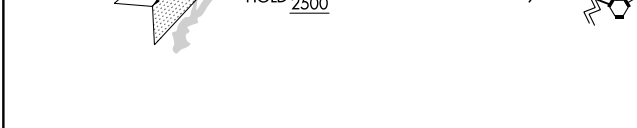
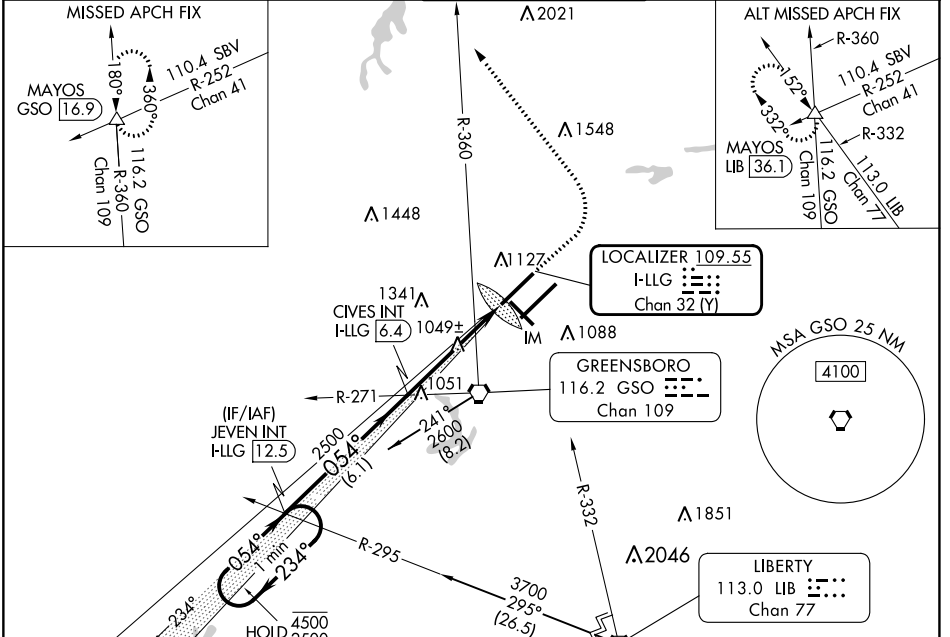
ILS or LOC RWY 5L

PIEDMONT TRIAD INTL (GSO)

DME or RADAR required for procedure entry at LIB VORTAC. ALSF-2

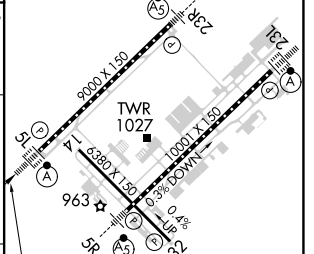
Simultaneous approach authorized. For inop ALS, increase S-LOC 5L Cat C/D visibility to RVR 5500. MISSED APPROACH: Climb to 1400 then climbing left turn to 3100 on heading 330° and GSO VORTAC R-360 to MAYOS INT/GSO 16.9 DME and hold.

D-ATIS 128.55	GREENSBORO APP CON 124.35 269.225 126.6 327.075 (050°-249°)	GREENSBORO TOWER 119.1 290.325	GND CON 121.9 348.6	CLNC DEL 121.75
-------------------------	---	--	-------------------------------	---------------------------



ELEV 926	TDZE 916
TDZ/CL Rwy 5L, 23R and 23L	
REIL Rwy 32	
HIRL Rwy 14-32, 5R-23L and 5L-23R	

One Minute Holding Pattern	VEVEN INT I-LLG (12.5)	CIVES INT I-LLG (6.4)	1400	3100	GSO R-360	MAYOS
4500 ← 234°	2500 → 054°	2500	hdg 330°			
GS 3.00°						
TCH 55						



CATEGORY	A	B	C	D
S-ILS 5L	1116/18		200 (200-½)	
S-LOC 5L	1300/24	384 (400-½)	1300/35	384 (400-¾)
CIRCLING	1440-1 514 (600-1)		1700-2¼ 774 (800-2¼)	1700-2½ 774 (800-2½)

FAF to MAP 4.7 NM					
Knots	60	90	120	150	180
Min:Sec	4:42	3:08	2:21	1:53	1:34

SE-2, 18 APR 2024 to 16 MAY 2024

SE-2, 18 APR 2024 to 16 MAY 2024