

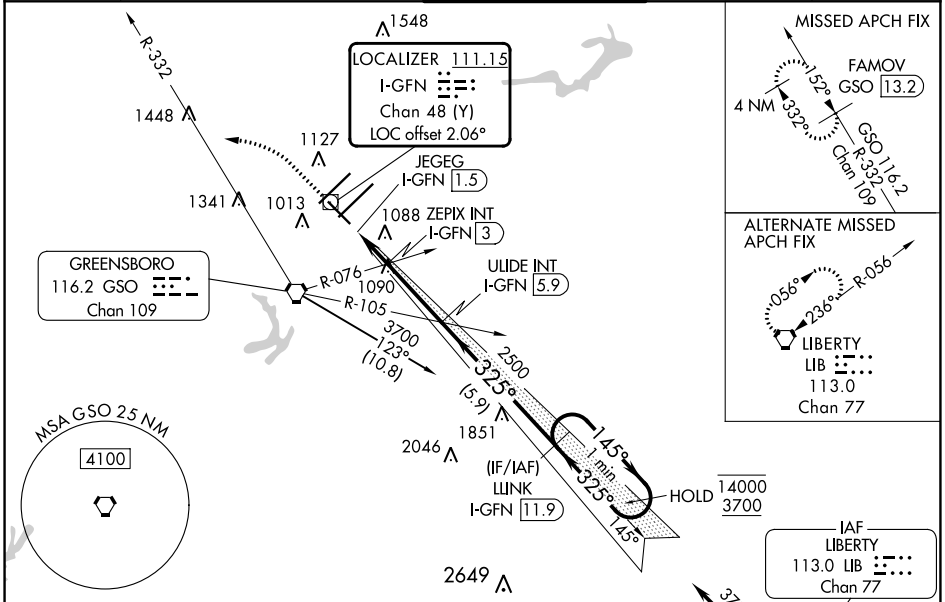
LOC/DME I-GFN 111.15 Chan 48 (Y)	APP CRS 325°	Rwy Idg 6380 TDZE 902 Apt Elev 926
---	------------------------	---

ILS Z or LOC Z RWY 32

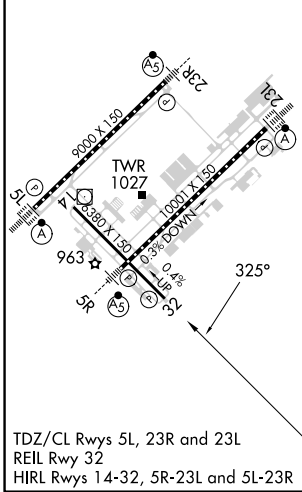
PIEDMONT TRIAD INTL (GSO)

DME required.		MISSED APPROACH: Climb to 1400 then climbing left turn to 3700 on heading 307° and GSO VORTAC R-332 to FAMOV/GSO 13.2 DME and hold.
Rwy 32 helicopter visibility reduction below 3/4 SM NA.		

D-ATIS 128.55	GREENSBORO APP CON 124.35 269.225 (250°-049°) 126.6 327.075 (050°-249°)	GREENSBORO TOWER 119.1 290.325	GND CON 121.9 348.6	CLNC DEL 121.75
-------------------------	---	--	-------------------------------	---------------------------



ELEV 926	D TDZE 902
----------	-------------------



1400	3700	FAMOV GSO 13.2	ULIDE INT I-GFN 5.9	LINK I-GFN 11.9	One Minute Holding Pattern
↑	hdg 307°	GSO R-332	ZEPHX INT I-GFN 3	2500	145° → 1400 ← 325° 3700
		JEGEG I-GFN 1.5	I-GFN 2.4	1600	2500
		← 0.4 1 NM 0.6 NM → 2.9 NM → 5.9 NM →			
CATEGORY	A	B	C	D	
S-ILS 32	1152-3/4 250 (300-3/4)				
S-LOC 32	1400-1	498 (500-1)	1400-1 3/8	498 (500-1 3/8)	
C CIRCLING	1440-1	514 (600-1)	1700-2 1/4	1700-2 1/2 774 (800-2 1/4) 774 (800-2 1/2)	

SE-2, 18 APR 2024 to 16 MAY 2024

SE-2, 18 APR 2024 to 16 MAY 2024