

| | | | |
|--|------------------------|-----------------------------|---|
| WAAS CH 93919 W14A | APP CRS 143° | Rwy Idg TDZE Apt Elev | 6380 925 926 |
|--|------------------------|-----------------------------|---|

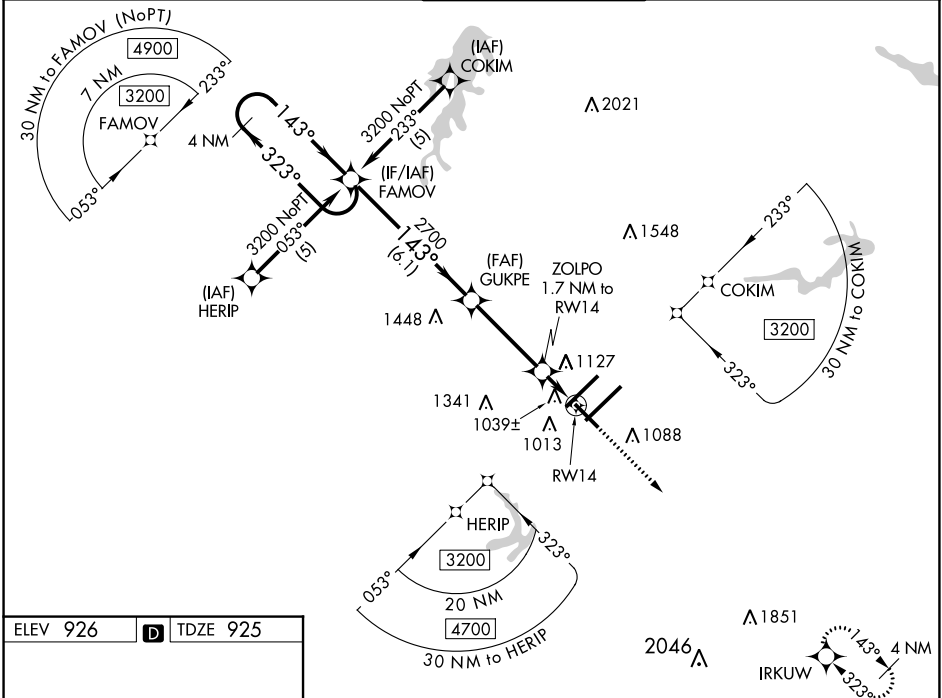
RNAV (GPS) RWY 14

PIEDMONT TRIAD INTL (GSO)

⚠ Baro-VNAV NA when using Winston-Salem altimeter setting. For uncompensated Baro-VNAV systems, LNAV/VNAV NA below -16°C (4°F) or above 47°C (116°F). DME/DME RNP-0.3 NA. When local altimeter setting not received, use Winston-Salem altimeter setting: increase LPV DA to 1163 feet; increase LNAV/VNAV DA to 1461 feet; increase all MDAs 40 feet and visibility Cats C and D ¼ SM. VDP NA with Winston-Salem altimeter setting.

MISSED APPROACH:
Climb to 3700 direct IRKUW and hold.

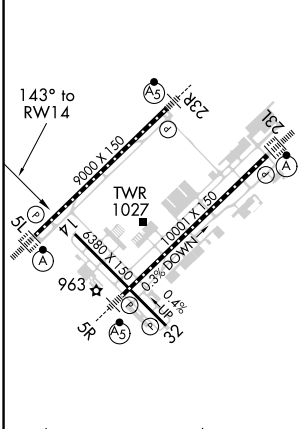
| | | | | |
|-------------------------|---|--|-------------------------------|---------------------------|
| D-ATIS 128.55 | GREENSBORO APP CON 124.35 269.225 126.6 327.075 (050°-049°) | GREENSBORO TOWER 119.1 290.325 | GND CON 121.9 348.6 | CLNC DEL 121.75 |
|-------------------------|---|--|-------------------------------|---------------------------|



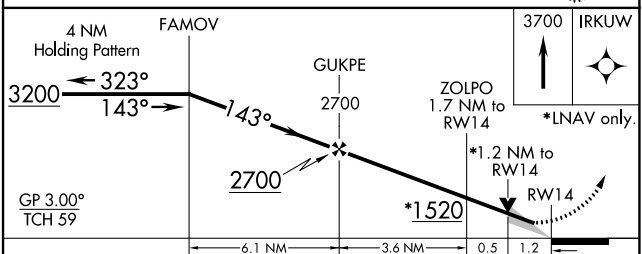
SE-2, 18 APR 2024 to 16 MAY 2024

SE-2, 18 APR 2024 to 16 MAY 2024

| | | |
|----------|----------|----------|
| ELEV 926 | D | TDZE 925 |
|----------|----------|----------|



TDZ/CL Rwy 5L, 23R and 23L
REIL Rwy 32
HIRL Rwy 14-32, 5R-23L and 5L-23R



| CATEGORY | A | B | C | D |
|-------------------|--------|-------------|-------------------------------|-------------------------------|
| LPV DA | | 1125-3/4 | 200 (200-3/4) | |
| LNAV/VNAV DA | | 1423-13/4 | 498 (500-13/4) | |
| LNAV MDA | 1360-1 | 435 (500-1) | 1360-1 1/2 435 (500-1 1/2) | 1360-1 1/2 435 (500-1 1/2) |
| C CIRCLING | 1440-1 | 514 (600-1) | 1700-2 1/4 774 (800-2 1/4) | 1700-2 1/2 774 (800-2 1/2) |