


| | | | |
|--|------------------------|---|-------------|
| WAAS CH 90315 W23B | APP CRS 234° | Rwy Idg TDZE 864 Apt Elev 926 | 9000 |
|--|------------------------|---|-------------|

RNAV (GPS) RWY 23R

PIEDMONT TRIAD INTL (GSO)

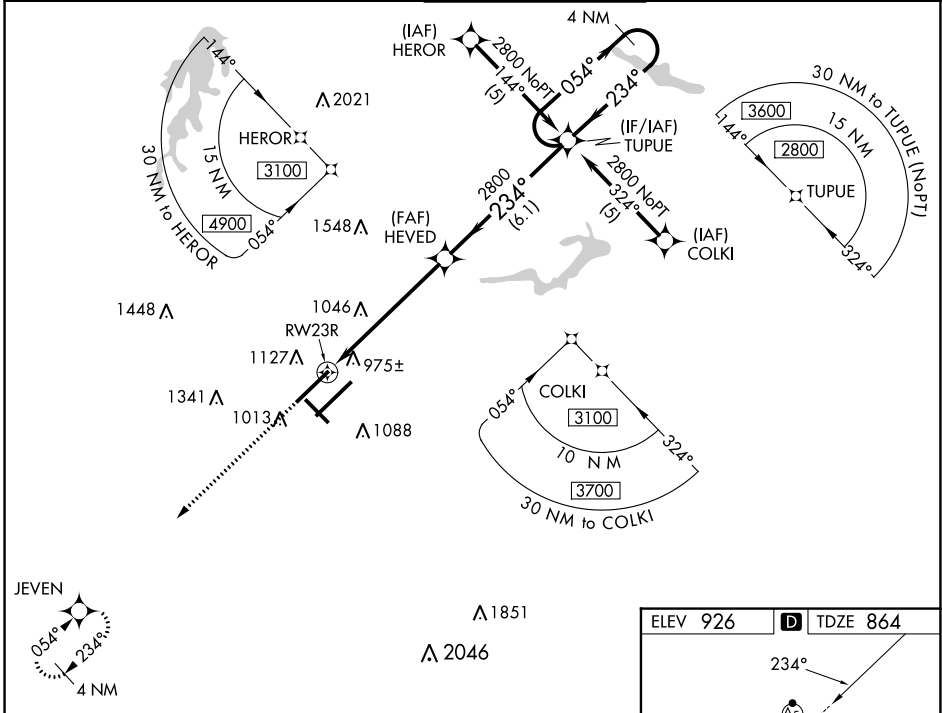
▼ For uncompensated Baro-VNAV systems, LNAV/VNAV NA below -16°C (4°F) or above 47°C (116°F). DME/DME RNP-0.3 NA. Simultaneous approach authorized with ILS or LOC RWY 23L, ILS RWY 23L CAT (II). LNAV procedure NA during simultaneous operations. Use of FD or AP providing RNAV track guidance required during simultaneous operations.

MALSR



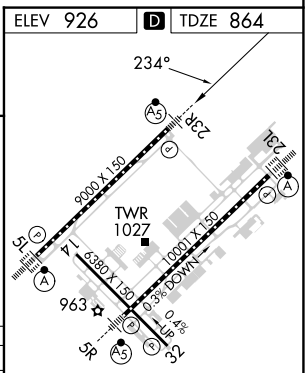
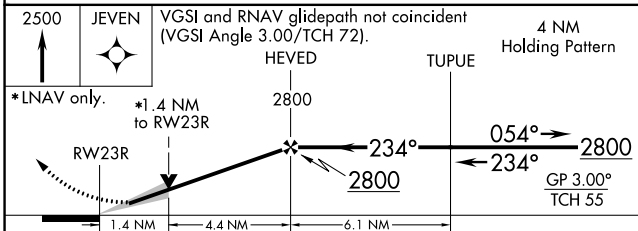
MISSED APPROACH: Climb to 2500 direct JEVEN and hold.

| | | | | |
|-------------------------|---|--|-------------------------------|---------------------------|
| D-ATIS 128.55 | GREENSBORO APP CON 124.35 269.225 126.6 327.075 (050°-249°) | GREENSBORO TOWER 119.1 290.325 | GND CON 121.9 348.6 | CLNC DEL 121.75 |
|-------------------------|---|--|-------------------------------|---------------------------|



SE-2, 18 APR 2024 to 16 MAY 2024

SE-2, 18 APR 2024 to 16 MAY 2024



| CATEGORY | A | B | C | D |
|-------------------|---------|-------------|-------------------------|-------------------------|
| LPV DA | | 1064/18 | 200 (200-½) | |
| LNAV/VNAV DA | | 1414-1½ | 550 (500-1½) | |
| LNAV MDA | 1340/24 | 476 (500-½) | 1340/50 | 476 (500-1) |
| C CIRCLING | 1440-1 | 514 (600-1) | 1700-2¼ 774 (800-2¼) | 1700-2½ 774 (800-2½) |

TDZ/CL Rwy 5L, 23R and 23L
REIL Rwy 32
HIRL Rwy 14-32, 5R-23L and 5L-23R