

WAAS CH 53610 W05A	APP CRS 054°	Rwy Idg TDZE Apt Elev	10001 900 926
--	------------------------	-----------------------------	--


RNAV (GPS) RWY 5R

PIEDMONT TRIAD INTL (GSO)

RNP APCH-GPS.

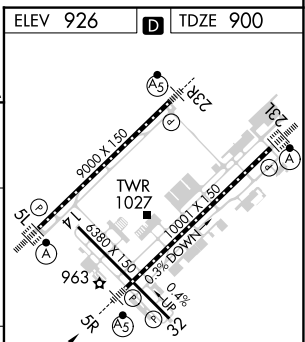
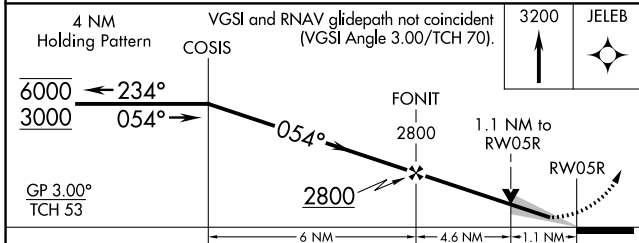
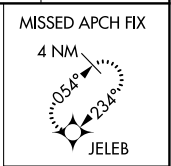
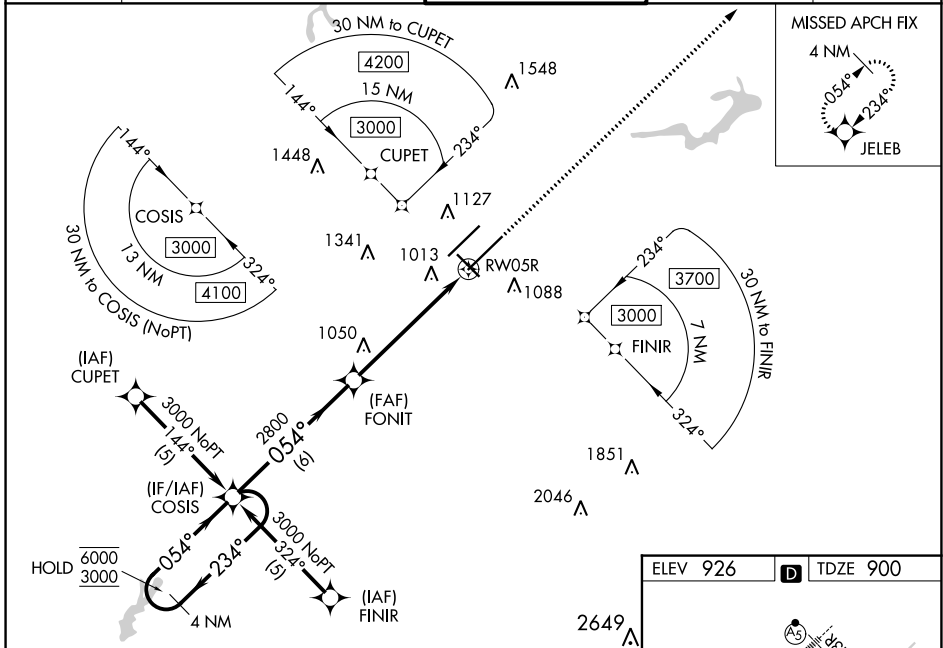
▼ For uncompensated Baro-VNAV systems, LNAV/VNAV NA below -16°C or above 54°C.
 ▲ Simultaneous approach authorized. Use of FD or AP required during simultaneous operations.
 LNAV procedure NA during simultaneous operations. For inop ALS, increase LNAV Cat C/D visibility to RVR 6000.
 **1800 RVR authorized with use of FD or AP or HUD to DA.

MALSRS



MISSED APPROACH:
Climb to 3200 direct JELEB and hold.

D-ATIS 128.55	GREENSBORO APP CON 124.35 269.225 (250°-049°) 126.6 327.075 (050°-249°)	GREENSBORO TOWER 119.1 290.325	GND CON 121.9 348.6	CLNC DEL 121.75
-------------------------	---	--	-------------------------------	---------------------------



CATEGORY	A	B	C	D
LPV DA**		1100/24	200 (200-½)	
LNAV/VNAV DA		1321/40	421 (400-¾)	
LNAV MDA	1300/24	400 (400-½)	1300/40	400 (400-¾)
CIRCLING	1440-1	514 (600-1)	1700-2¼ 774 (800-2¼)	1700-2½ 774 (800-2½)

TDZ/CL Rwy 5L, 23R and 23L
 REIL Rwy 32
 HIRL Rwy 14-32, 5R-23L and 5L-23R

SE-2, 18 APR 2024 to 16 MAY 2024

SE-2, 18 APR 2024 to 16 MAY 2024