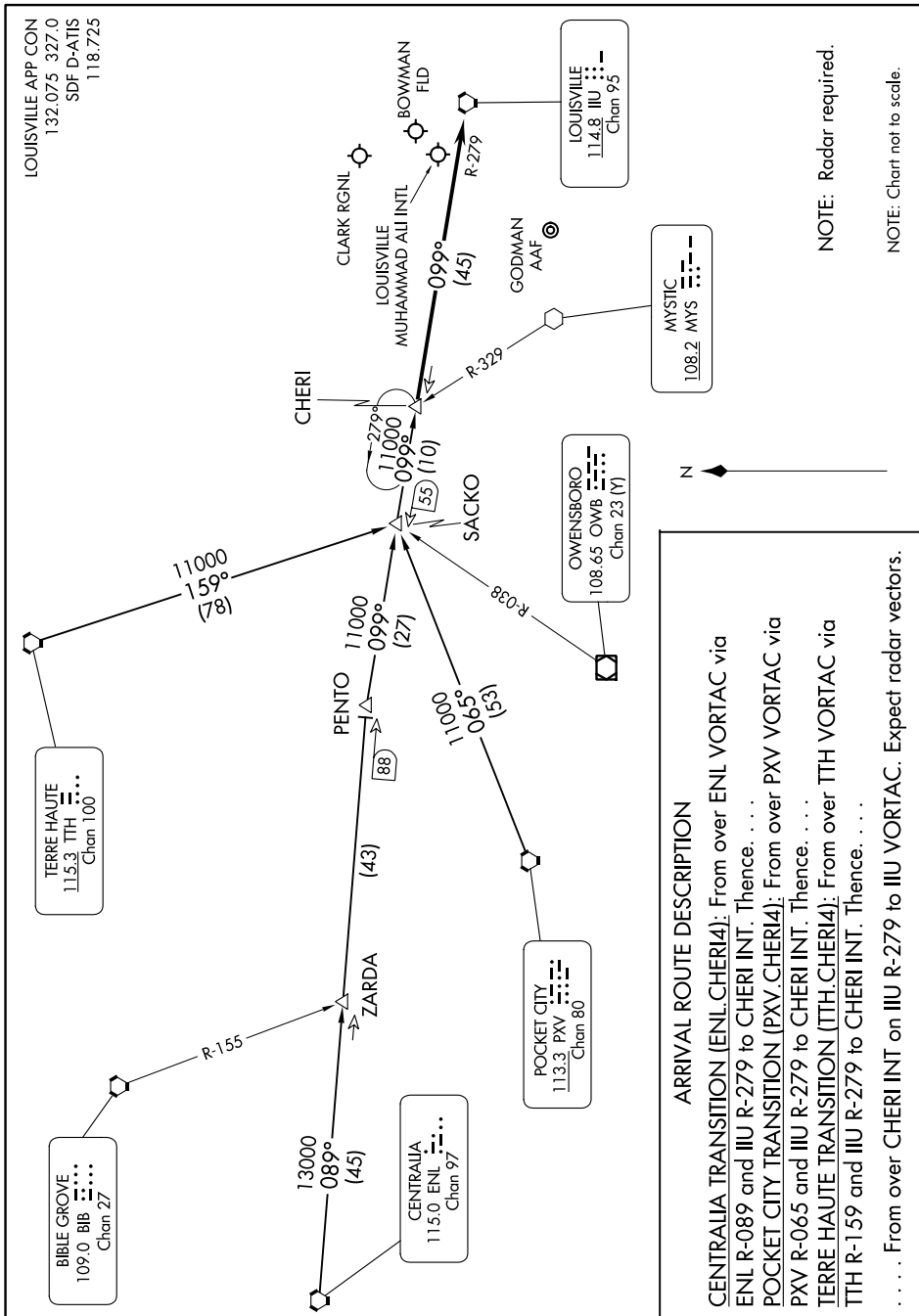


# CHERI FOUR ARRIVAL

LOUISVILLE, KENTUCKY

SE-1, 18 APR 2024 to 16 MAY 2024



**ARRIVAL ROUTE DESCRIPTION**

CENTRALIA TRANSITION (ENL.CHERI4): From over ENL VORTAC via ENL R-089 and IIU R-279 to CHERI INT. Thence. . . .

POCKET CITY TRANSITION (PXV.CHERI4): From over PXV VORTAC via PXV R-065 and IIU R-279 to CHERI INT. Thence. . . .

TERRE HAUTE TRANSITION (TTH.CHERI4): From over TTH VORTAC via TTH R-159 and IIU R-279 to CHERI INT. Thence. . . .

. . . . From over CHERI INT on IIU R-279 to IIU VORTAC. Expect radar vectors.

NOTE: Radar required.

NOTE: Chart not to scale.

# CHERI FOUR ARRIVAL

LOUISVILLE, KENTUCKY

SE-1, 18 APR 2024 to 16 MAY 2024