

LUBBOCK, TEXAS

HI-LOC/DME BC RWY 35L

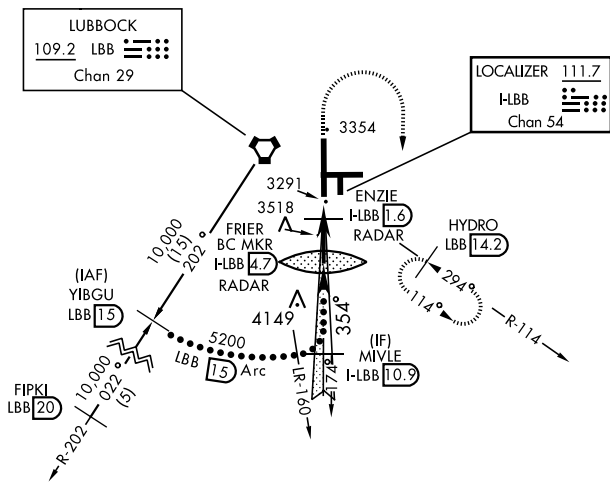
LOC I-LBB 111.7 Chan 54	APCH CRS 354°	Rwy Idg 11,500 TDZE 3254 Arpt Elev 3282
---	-------------------------	--

AL-241 [USAF]

LUBBOCK PRESTON SMITH INTL (KLBB)

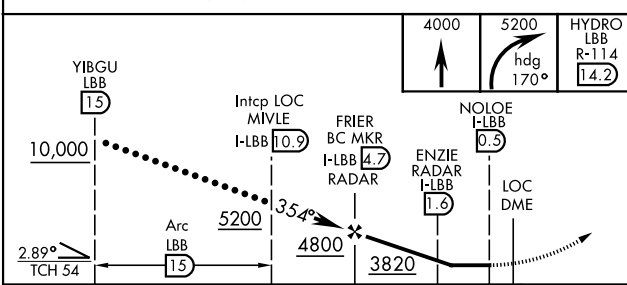
<p>V Use I-LBB DME when on Localizer course.</p> <p>A</p>	<p>MISSED APPROACH: Climb to 4000, then climbing right turn to 5200 on Hdg 170° and on LBB VORTAC R-114 to HYDRO INT/LBB 14.2 DME and hold.</p>
---	---

<p>ATIS 125.3 270.275</p>	<p>APP CON 119.2 351.8</p>	<p>TOWER 120.5 239.3</p>	<p>GND CON 121.9 348.6</p>	<p>CLNC DEL 125.8 281.55</p>
--------------------------------------	---------------------------------------	-------------------------------------	---------------------------------------	---



BACKCOURSE

EMERG SAFE ALT 100 NM 7300



ELEV 3282	D TDZE 3254
<p>HIRL Rwy 8-26, 17R-35L REIL Rwy 8</p>	
<p>3321 A A5 3356 P 3261 V 35L 3379 P 3386 A 3415 A 35R 354° 5 NM from FAF FAF to MAP 4.2 NM</p>	
Knots	120 150 160 180 200
Min:Sec	2:06 1:41 1:35 1:24 1:16

CATEGORY	C	D	E
S-35L	3560-7 $\frac{1}{8}$	306 (300-7 $\frac{1}{8}$)	
C CIRCLING	3880-1 $\frac{1}{2}$ 598 (600-1 $\frac{1}{2}$)	3940-2 658 (700-2)	4100-3 818 (900-3)

LUBBOCK, TEXAS
Orig C 21MAY20

33°40'N-101°49'W

LUBBOCK PRESTON SMITH INTL (KLBB)

HI-LOC/DME BC RWY 35L

SC-2, 18 APR 2024 to 16 MAY 2024

SC-2, 18 APR 2024 to 16 MAY 2024