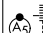


LOC IDLT 111.9	APP CRS 264°	Rwy Idg 8003
		TDZE 3255
		Apt Elev 3282

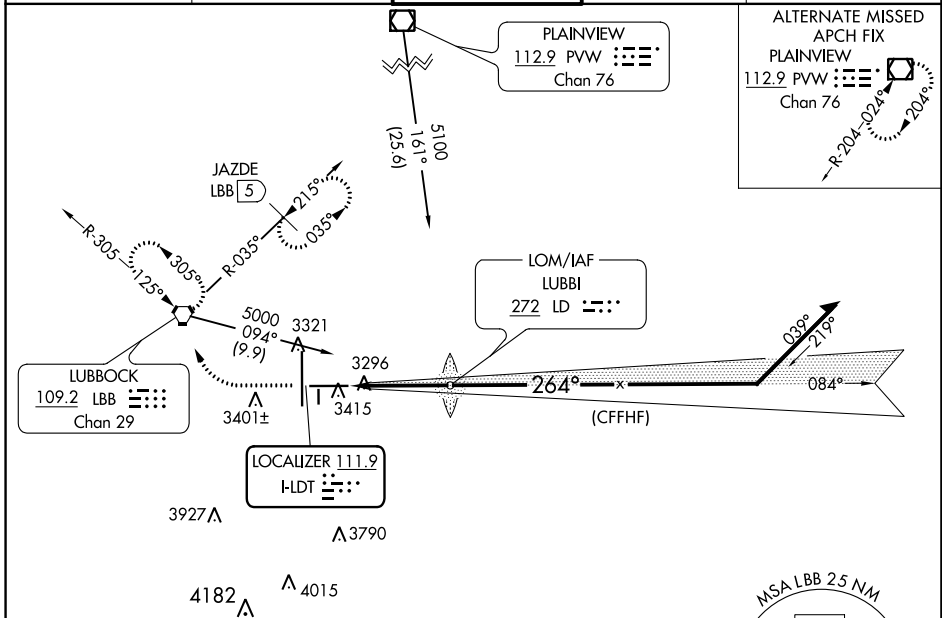
ILS or LOC RWY 26

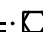
LUBBOCK PRESTON SMITH INTL (LBB)

▼ For inop MALS, increase S-ILS 26 Cat E visibility to RVR 4000 and increase S-LOC 26 Cat C/D/E visibility to RVR 4500.
▲ #RVR 1800 authorized with use of FD or AP or HUD to DA.

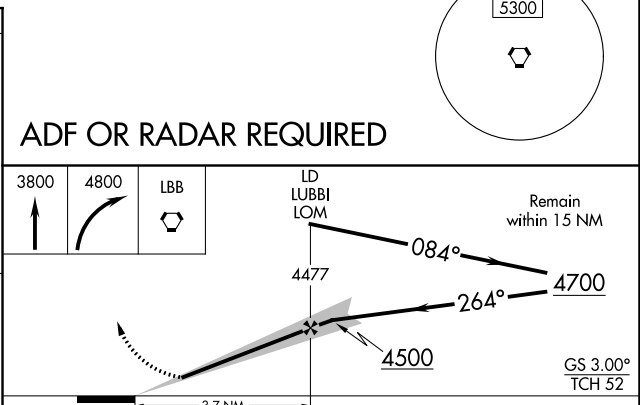
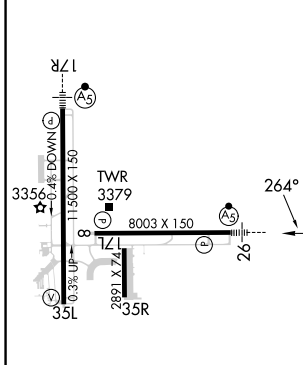
MALS
 MISSED APPROACH: Climb to 3800 then climbing right turn to 4800 direct LBB VORTAC and hold (TACAN aircraft climb to 3800 then climbing right turn to 5100 on heading 300° and on LBB VORTAC R-035 to JAZDE/LBB 5 DME and hold northeast left turn 215° inbound).

ATIS 125.3 270.275	LUBBOCK APP CON 119.2 351.8	LUBBOCK TOWER 120.5 239.3	GND CON 121.9 348.6	CLNC DEL 125.8 281.55
------------------------------	---------------------------------------	-------------------------------------	-------------------------------	---------------------------------



ALTERNATE MISSED APCH FIX
PLAINVIEW
 112.9 PWV
 Chan 76

 R-204-024
 20°

ELEV 3282	D	TDZE 3255
-----------	----------	-----------



REIL Rwy 8	HIRL Rws 8-26 and 17R-35L				
FAF to MAP 3.7 NM					
Knots	60	90	120	150	180
Min:Sec	3:42	2:28	1:51	1:29	1:14
<input checked="" type="checkbox"/> CIRCLING	3720-1 438 (500-1)	3740-1 458 (500-1)	3880-1½ 598 (600-1½)	3940-2 658 (700-2)	4100-3 818 (900-3)
CATEGORY	A	B	C	D	E
S-ILS 26	#3455/24 200 (200-½)				
S-LOC 26	3560/24 305 (300-½)				

SC-2, 18 APR 2024 to 16 MAY 2024

SC-2, 18 APR 2024 to 16 MAY 2024