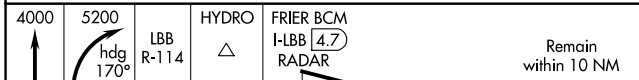
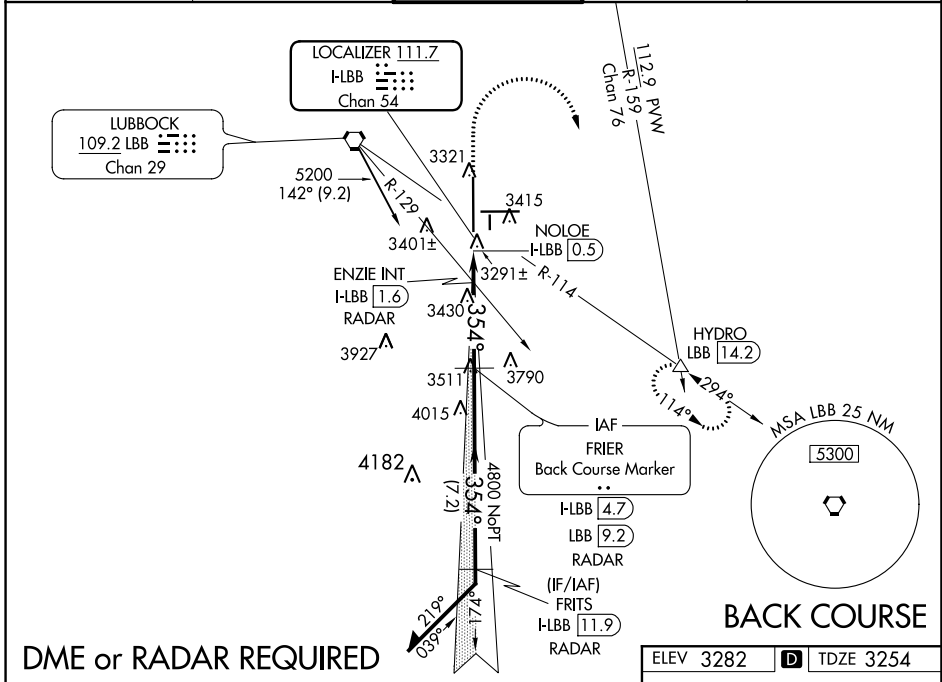


LOC I-LBB 111.7 Chan 54	APP CRS 354°	Rwy Idg TDZE Apt Elev	11500 3254 3282
--------------------------------------	------------------------	-----------------------------	--

LOC BC RWY 35L
LUBBOCK PRESTON SMITH INTL (LBB)

MISSED APPROACH: Climb to 4000 then climbing right turn to 5200 on heading 170° and on LBB VORTAC R-114 to HYDRO INT/LBB 14.2 DME and hold.

ATIS 125.3 270.275	LUBBOCK APP CON 119.2 351.8	LUBBOCK TOWER 120.5 239.3	GND CON 121.9 348.6	CLNC DEL 125.8 281.55
------------------------------	---------------------------------------	-------------------------------------	-------------------------------	---------------------------------



CATEGORY	A	B	C	D
S-35L	3820-1	566 (600-1)	3820-1½	566 (600-1½)
C CIRCLING	3820-1	538 (600-1)	3880-1½ 598 (600-1½)	3940-2 658 (600-2)
ENZIE FIX MINIMUMS				
S-35L	3560-1	306 (300-1)	3560-7/8	306 (300-7/8)
C CIRCLING	3720-1 438 (500-1)	3740-1 458 (500-1)	3880-1½ 598 (600-1½)	3940-2 658 (700-2)

