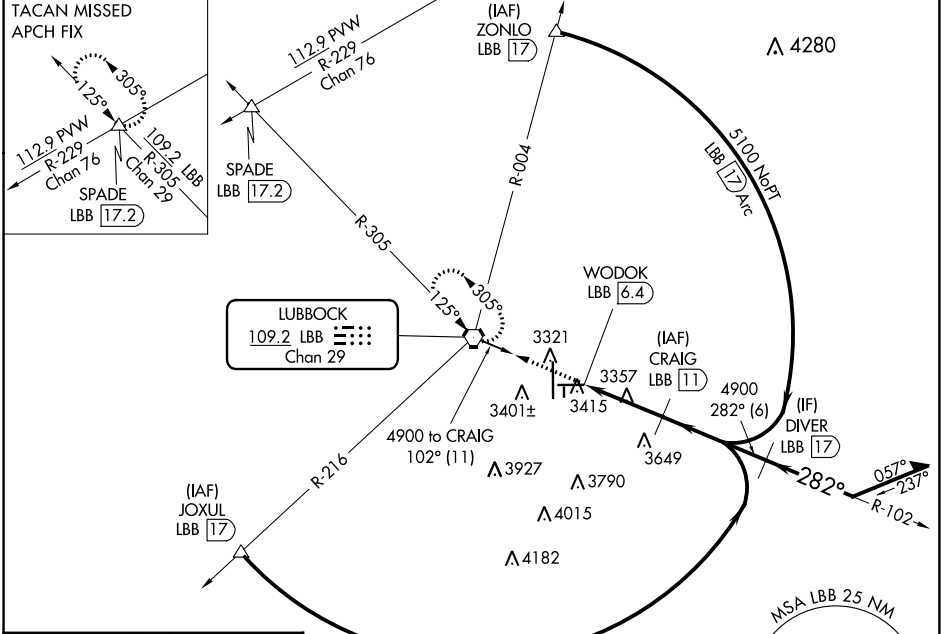


VORTAC LBB <b>109.2</b> Chan 29	APP CRS <b>282°</b>	Rwy Idg TDZE Apt Elev <b>8003</b> <b>3256</b> <b>3282</b>
---------------------------------------	------------------------	--

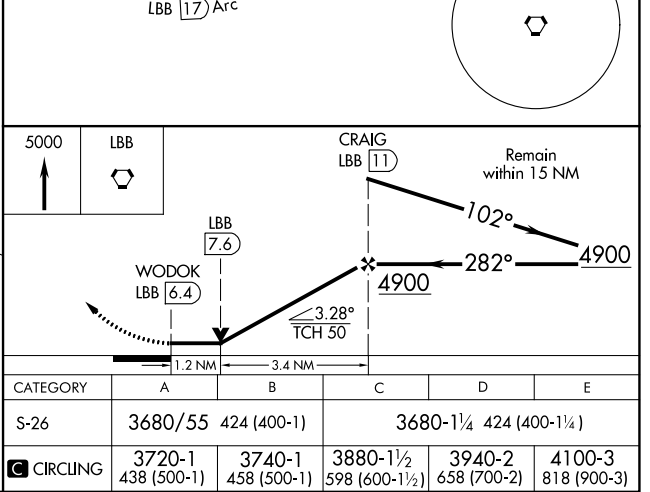
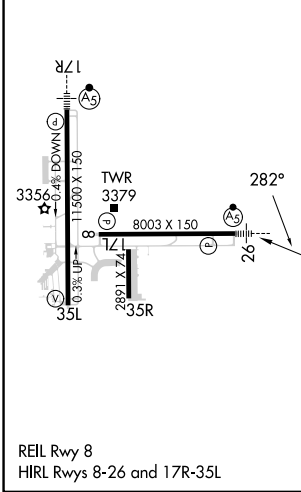
# VOR/DME or TACAN RWY 26

LUBBOCK PRESTON SMITH INTL (LBB)

Inop table does not apply.	MALSR	MISSED APPROACH: Climb to 5000 direct LBB VORTAC and hold (TACAN aircraft continue climb to 5100 on LBB R-305 to SPADE INT/17.2 DME and hold NW, left turn 125° inbound).		
ATIS <b>125.3 270.275</b>	LUBBOCK APP CON <b>119.2 351.8</b>	LUBBOCK TOWER <b>120.5 239.3</b>	GND CON <b>121.9 348.6</b>	CLNC DEL <b>125.8 281.55</b>



ELEV 3282	<b>D</b> TDZE 3256
-----------	--------------------



SC-2, 18 APR 2024 to 16 MAY 2024

SC-2, 18 APR 2024 to 16 MAY 2024