

WAAS CH <b>78328</b> <b>W11A</b>	APP CRS <b>107°</b>	Rwy Idg TDZE Apt Elev	<b>4713</b> <b>408</b> <b>408</b>
--	------------------------	-----------------------------	---

# RNAV (GPS) RWY 11

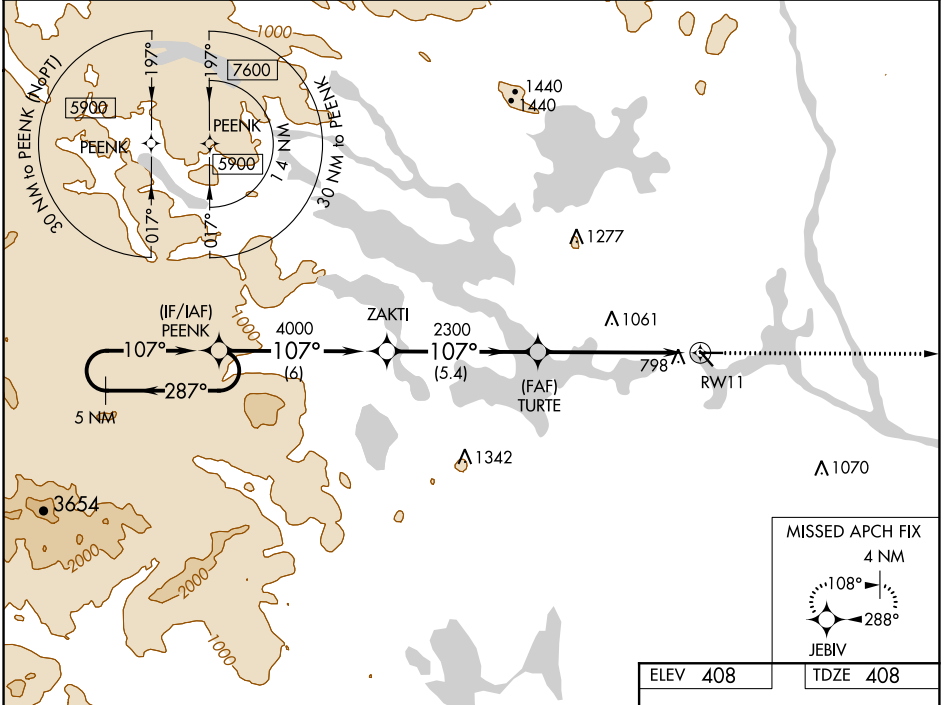
MILLINOCKET MUNI (MLT)

RNP APCH.

Baro-VNAV NA when using Houlton altimeter setting. For uncompensated Baro-VNAV systems, LNAV/VNAV NA below -15°C or above 41°C. Rwy 11 helicopter visibility reduction below 1 SM NA. When local altimeter setting not received, use Houlton altimeter setting and increase all DA and MDA 120 feet; increase LPV and LNAV/VNAV visibility all Cats ½ SM and LNAV visibility Cat B ¼ SM and Cat C/D ½ SM. Procedure NA at night.

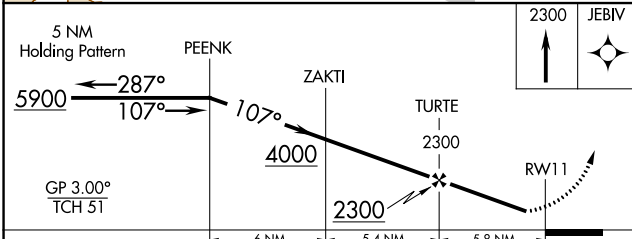
MISSED APPROACH:  
Climb to 2300 direct JEBIV and hold.

ASOS <b>135.225</b>	BOSTON CENTER <b>120.25 346.4</b>	UNICOM <b>122.8 (CTAF)</b>
------------------------	--------------------------------------	-------------------------------

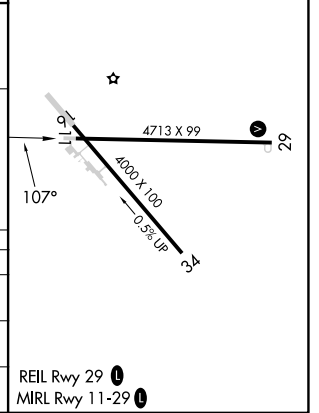


NE-1, 18 APR 2024 to 16 MAY 2024

NE-1, 18 APR 2024 to 16 MAY 2024



ELEV 408	TDZE 408
----------	----------



CATEGORY	A	B	C	D
LPV DA	929-1¾ 521 (600-1¾)			
LNAV/VNAV DA	1004-2 596 (600-2)			
LNAV MDA	1100-1 692 (700-1)	1100-2 692 (700-2)		