

| | | | |
|--|------------------------|-----------------------------|---|
| WAAS CH 53628 W29A | APP CRS 287° | Rwy Idg TDZE Apt Elev | 4713 408 408 |
|--|------------------------|-----------------------------|---|

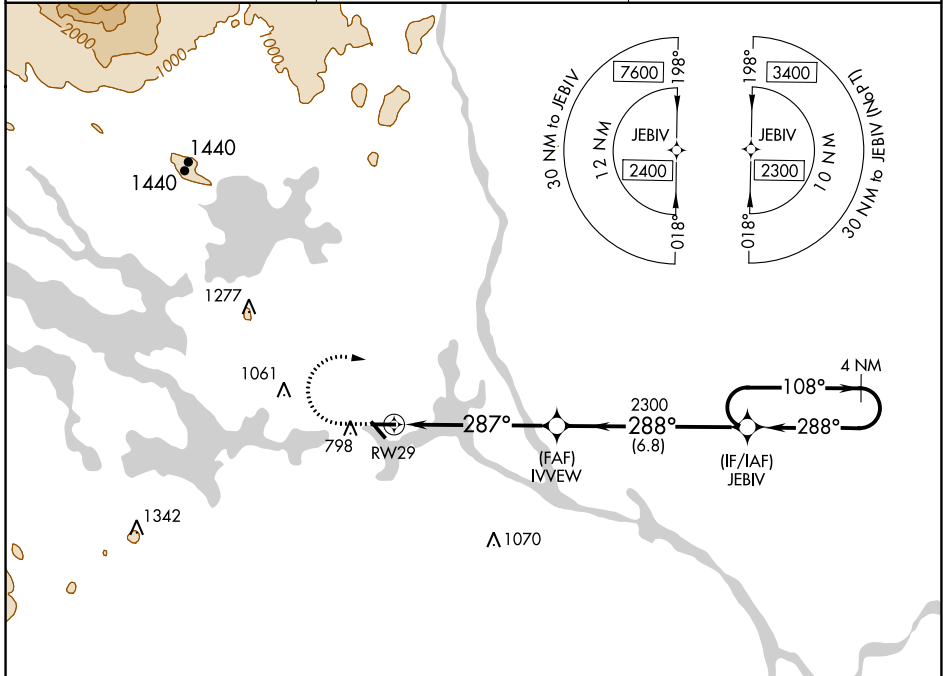
RNAV (GPS) RWY 29

MILLINOCKET MUNI (MLT)

⚠ Baro-VNAV NA when using Houlton altimeter setting. For uncompensated Baro-VNAV systems, LNAV/VNAV NA below -15°C (5°F) or above 41°C (105°F). DME/DME RNP-0.3 NA. Helicopter visibility reduction below 3/4 SM NA. When local altimeter setting not received, use Houlton altimeter setting and increase LPV DA to 817 feet and all Cats visibility 3/8 SM; increase LNAV/VNAV DA to 935 feet and all Cats visibility 3/8 SM; increase all MDAs 120 feet and LNAV Cat C/D visibility 3/8 SM, and Circling Cat A/B visibility 1/4 SM and Cat C visibility 1/2 SM. Night landing: Rwy 11, 34 NA.

MISSED APPROACH: Climb to 920 then climbing right turn to 2300 direct JEBIV and hold.

| | | |
|------------------------|--------------------------------------|-------------------------------|
| ASOS 135.225 | BOSTON CENTER 120.25 346.4 | UNICOM 122.8 (CTAF) |
|------------------------|--------------------------------------|-------------------------------|



| | | | | | |
|--------------|-----------|-------------|---|------------------------|--|
| ELEV 408 | TDZE 408 | 920 | 2300 | JEBIV | |
| | | | <p>* LNAV only</p> <p>IVVEW 2300</p> <p>JEBIV 2300</p> <p>4 NM Holding Pattern</p> <p>108° → 2300</p> <p>← 288°</p> <p>GP 3.00° TCH 5T</p> | | |
| | | 1.5 NM | 4.3 NM | 6.8 NM | |
| CATEGORY | A | B | C | D | |
| LPV DA | 697-1 | | 289 (300-1) | | |
| LNAV/VNAV DA | 815-1 3/8 | | 407 (500-1 3/8) | | |
| LNAV MDA | 920-1 | 512 (600-1) | 920-1 1/2 | 512 (600-1 1/2) | |
| CIRCLING | 1100-1 | 692 (700-1) | 1100-2 692 (700-2) | 1380-3 972 (1000-3) | |

NE-1, 18 APR 2024 to 16 MAY 2024

NE-1, 18 APR 2024 to 16 MAY 2024