

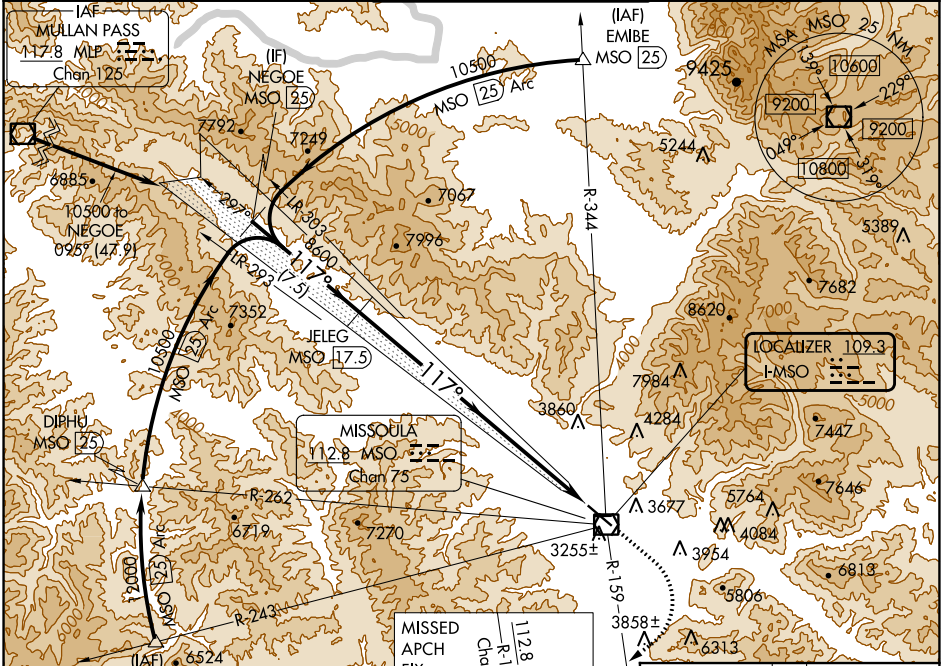
LOC I-MSO 109.3	APP CRS 117°	Rwy ldg TDZE Apt Elev	9501 3200 3206
---------------------------	------------------------	-----------------------------	---

ILS Z RWY 12

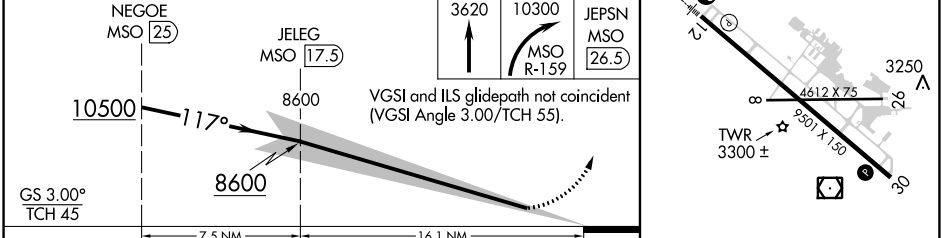
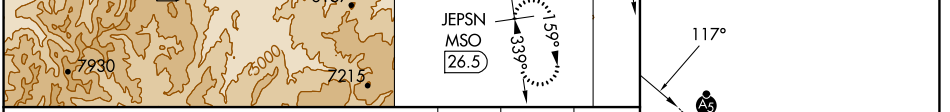
MISSOULA MONTANA (MISO)

DME required.	MALSRR 	<p>MISSED APPROACH: Climb to 3620 then climbing right turn to 10300 on MSO VOR/DME R-159 to JEPSN/MISO 26.5 DME and hold. Missed approach requires minimum climb of 410 feet per NM to 9800; if unable to meet climb gradient, see ILS Y RWY 12.</p>
---------------	------------	--

ATIS 126.65	SPOKANE APP CON * 124.9 298.95	MISSOULA TOWER * 118.4 (CTAF) 377.175	GND CON 121.9	UNICOM 122.95
-----------------------	--	---	-------------------------	-------------------------



ELEV 3206	TDZE 3200
-----------	-----------



CATEGORY	A	B	C	D
S-ILS 12		3411/24	211 (300-1/2)	

REIL Rwy 30
MIRL Rwy 8-26
HIRL Rwy 12-30

NW-1, 18 APR 2024 to 16 MAY 2024

NW-1, 18 APR 2024 to 16 MAY 2024