

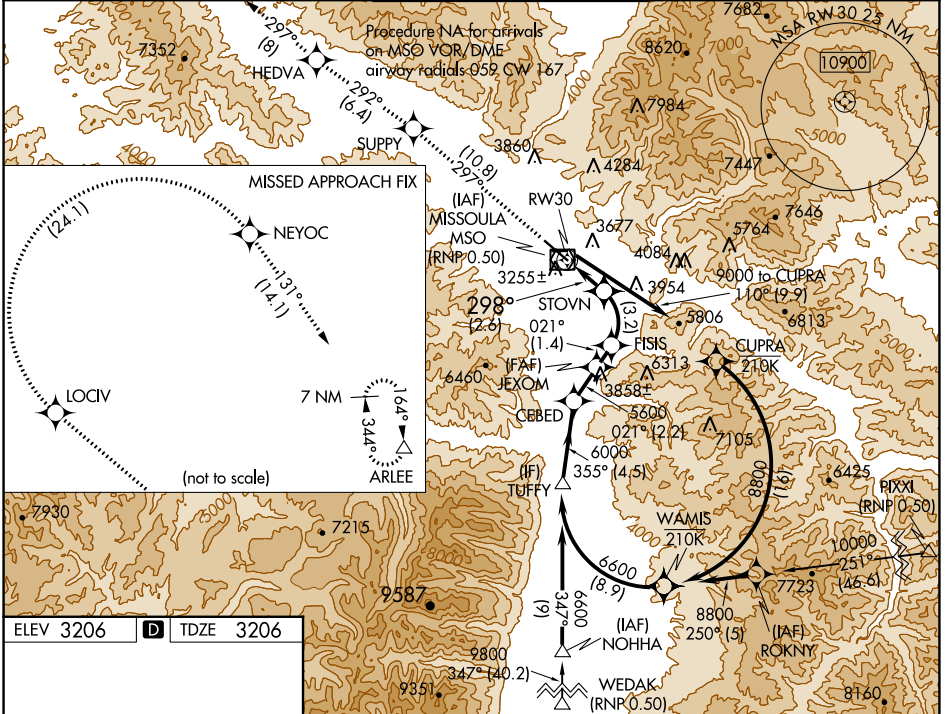
APP CRS 298°	Rwy Idg TDZE Apt Elev	9501 3206 3206
------------------------	-----------------------------	---

RNAV (RNP) RWY 30

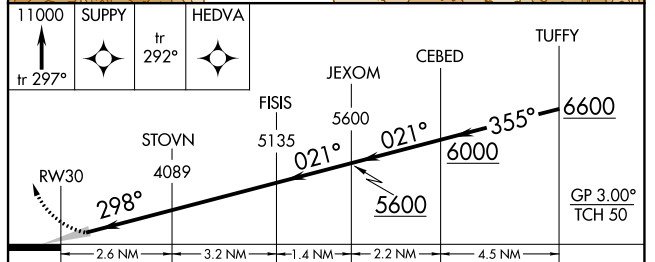
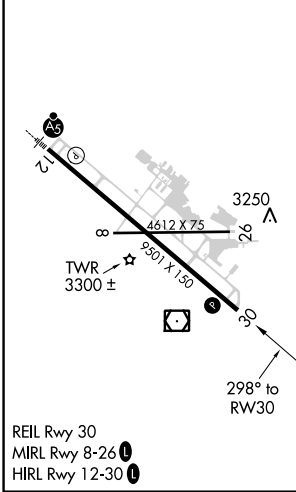
MISSOULA MONTANA (MSO)

RNP AR APCH. RF required.	MISSED APPROACH: Climb to 11000 on track 297° to SUPPY and on track 292° to HEDVA and on track 297° to LOCIV, then right turn to NEYOC and on track 131° to ARLLEE and hold. *Misted approach requires minimum climb of 215 feet per NM to 5000.
<p>For uncompensated Baro-VNAV systems, procedure NA below -21°C (-5°F) or above 43°C (109°F). When local altimeter setting not received, procedure NA.</p> <p>-12°C</p>	

ATIS 126.65	SPOKANE APP CON * 124.9 298.95	MISSOULA TOWER * 118.4 (CTAF) 0 377.175	GND CON 121.9	UNICOM 122.95
-----------------------	--	---	-------------------------	-------------------------



ELEV 3206	D	TDZE 3206
-----------	---	-----------



CATEGORY	A	B	C	D
RNP 0.30 DA*	3524-1 318 (400-1)			
RNP 0.30 DA	3582-1¼ 376 (400-1¼)			

AUTHORIZATION REQUIRED

NW-1, 18 APR 2024 to 16 MAY 2024

NW-1, 18 APR 2024 to 16 MAY 2024