

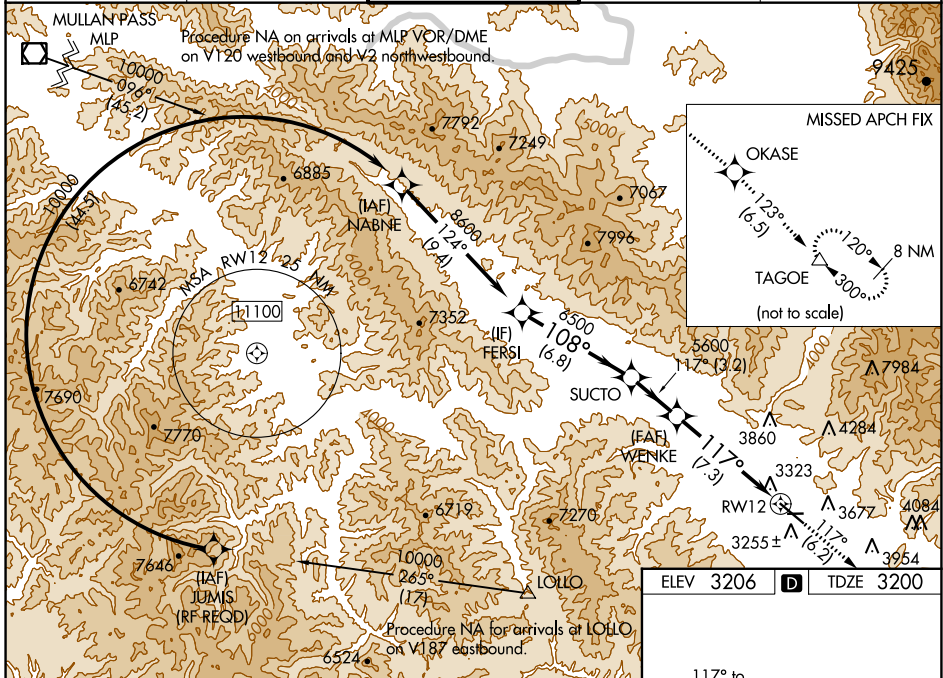
APP CRS	Rwy Idg	<b>9501</b>
<b>117°</b>	TDZE	<b>3200</b>
	Apt Elev	<b>3206</b>

# RNAV (RNP) Z RWY 12

MISSOULA MONTANA (MISO)

RNP AR APCH.		MALS R	<p>MISSED APPROACH: Climb to 13000 on track 117° to OKASE and on track 123° to TAGOE and hold, continue climb-in-hold to 13000.</p> <p>*Missed approach requires minimum climb of 350 feet per NM to 8300; if unable to meet climb gradient, see RNAV (GPS) Y RWY 12.</p> <p>#Missed approach requires minimum climb of 425 feet per NM to 8300.</p>
<p>▼ For uncompensated Baro-VNAV systems, LNAV/VNAV NA below -21° C (-6°F) or above 43°C (109°F).</p> <p>▲ For inop ALS, increase RNP 0.12 all Cats visibility to RVR 6000. For inop ALS, increase RNP 0.30 all Cats visibility to 2½ SM.</p> <p>When local weather not received, procedure NA.</p>			

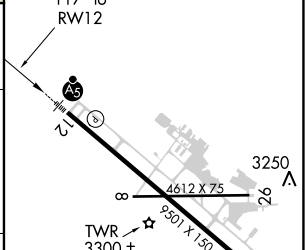
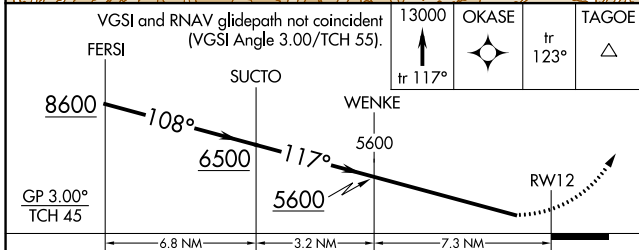
ATIS	SPOKANE APP CON*	MISSOULA TOWER*	GND CON	UNICOM
<b>126.65</b>	<b>124.9 298.95</b>	<b>118.4 (CTAF) 0 377.175</b>	<b>121.9</b>	<b>122.95</b>



NW-1, 18 APR 2024 to 16 MAY 2024

NW-1, 18 APR 2024 to 16 MAY 2024

ELEV 3206	TDZE 3200
-----------	-----------



CATEGORY	A	B	C	D
RNP 0.12 DA#	3518/40		318 (400-¾)	
RNP 0.30 DA*	3880-2		680 (700-2)	

## AUTHORIZATION REQUIRED

REIL Rwy 30  
MIRL Rwy 8-26  
HIRL Rwy 12-30