

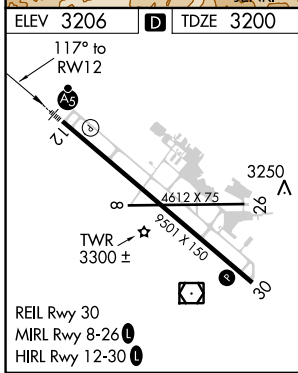
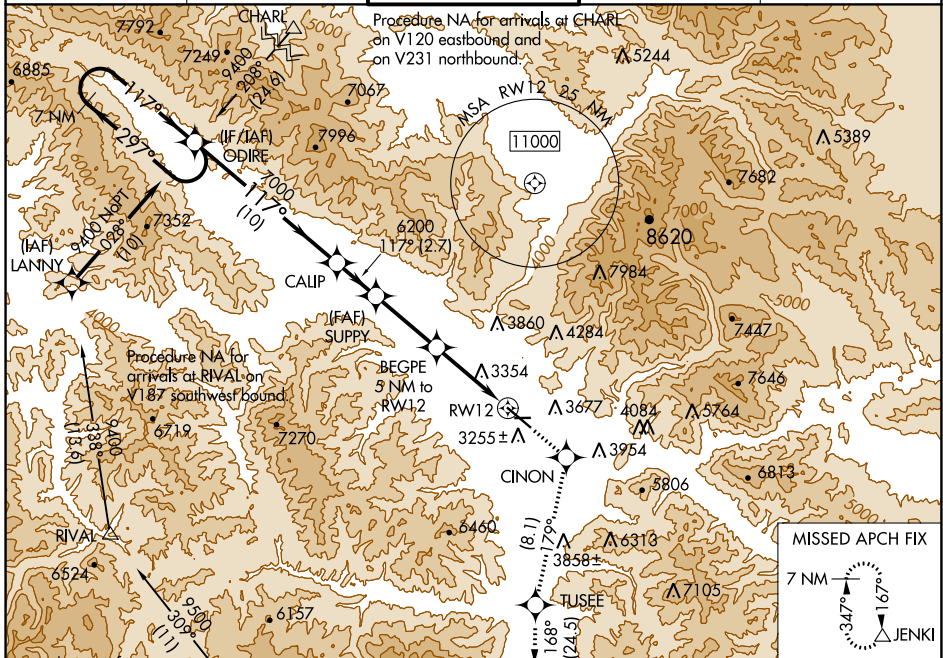
WAAS CH 65715 W12B	APP CRS 117°	Rwy Idg TDZE Apt Elev	9501 3200 3206
--	------------------------	-----------------------------	---

RNAV (GPS) Y RWY 12

MISSOULA MONTANA (MISO)

RNP APCH.	MALS R	MISSED APPROACH: (Do not exceed 200K until CINON) Climb to 2000 direct CINON and on track 179° to TUSEE and on track 168° to JENKI and hold, continue climb-in-hold to 2000. ## Missed approach requires minimum climb of 325 feet per NM to 7700.
<p>⚠ Circling N/A for Cats C and D northeast of Rwy 12-30. Inop table does not apply to LNAV # Cats C/D. Inop table does not apply to LPV † all Cats. **RVR 1800 authorized with use of FD or AP or HUD to DA.</p> <p>⚠ -12°C</p>		

ATIS 126.65	SPOKANE APP CON * 124.9 298.95	MISSOULA TOWER * 118.4 (CTAF) 0 377.175	GND CON 121.9	UNICOM 122.95
-----------------------	--	---	-------------------------	-------------------------



	7 NM Holding Pattern	ODIRE	CALIP	SUPPLY	BEGPE	CINON	TUSEE	JENKI
	9400	297°	117°	6200	5 NM to RWY 12	2000	tr 179°	tr 168°
	GP 3.00°		7000	*4840	*1.2 NM to RWY 12			
	TCH 55							
			10 NM	2.7 NM	4.3 NM	3.8 NM	1.2 NM	
CATEGORY	A	B	C	D				
LPV DA **		3400/24	200 (200-1/2)					
LPV DA †		4229-4	1029 (1100-4)					
LNAV MDA ##		3640/24	440 (500-1/2)	3640/40	440 (500-3/4)			
LNAV MDA #		4520/40 1320 (1400-3/4)	4520/55 1320 (1400-1)	4520-3	1320 (1400-3)			
CIRCLING		4520-1 1/4 1314 (1400-1 1/4)	4700-1 1/2 1494 (1500-1 1/2)	4700-3	1494 (1500-3)	5140-3	1934 (2000-3)	

NW-1, 18 APR 2024 to 16 MAY 2024

NW-1, 18 APR 2024 to 16 MAY 2024