

(VICTO1.VICTO) 23278

# VICTO ONE DEPARTURE (RNAV)

AL-266 (FAA)

MISSOULA MONTANA (MSO)

MISSOULA, MONTANA

RNAV 1 - GPS.

RADAR required

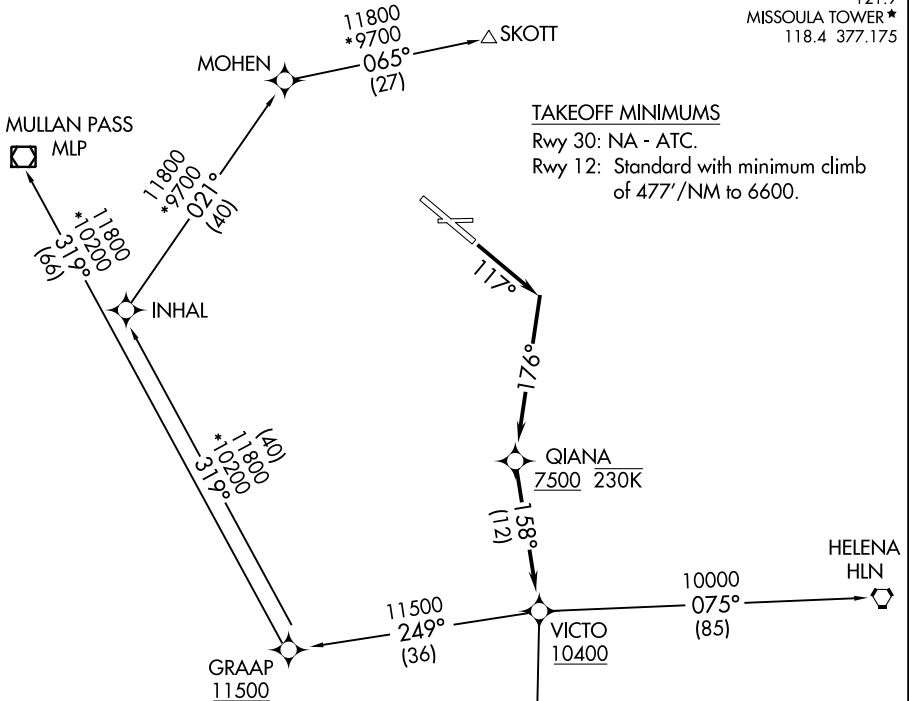
**TOP ALTITUDE:  
ASSIGNED BY ATC**

SPOKANE DEP CON \*  
124.9 298.95  
SALT LAKE CITY CENTER  
127.075 244.875  
ATIS  
126.65  
GND CON  
121.9  
MISSOULA TOWER \*  
118.4 377.175

### TAKEOFF MINIMUMS

Rwy 30: NA - ATC.

Rwy 12: Standard with minimum climb  
of 477'/NM to 6600.



### DEPARTURE ROUTE DESCRIPTION

TAKEOFF RUNWAY 12: Climb on heading 117° to intercept course 176° to cross QIANA at or above 7500 and at or below 230K, then on track 158° to cross VICTO at or above 10400, thence. . . .

. . . . (Transition), maintain ATC assigned altitude, expect filed altitude 10 minutes after departure.

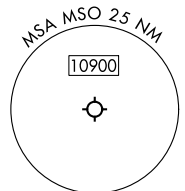
HELENA TRANSITION (VICTO1.HLN)

MULLAN PASS TRANSITION (VICTO1.MLP)

SALMON TRANSITION (VICTO1.LKT)

SKOTT TRANSITION (VICTO1.SKOTT)

NOTE: Chart not to scale.



# VICTO ONE DEPARTURE (RNAV)

(VICTO1.VICTO) 05OCT23

MISSOULA, MONTANA  
MISSOULA MONTANA (MSO)

NW-1, 18 APR 2024 to 16 MAY 2024

NW-1, 18 APR 2024 to 16 MAY 2024