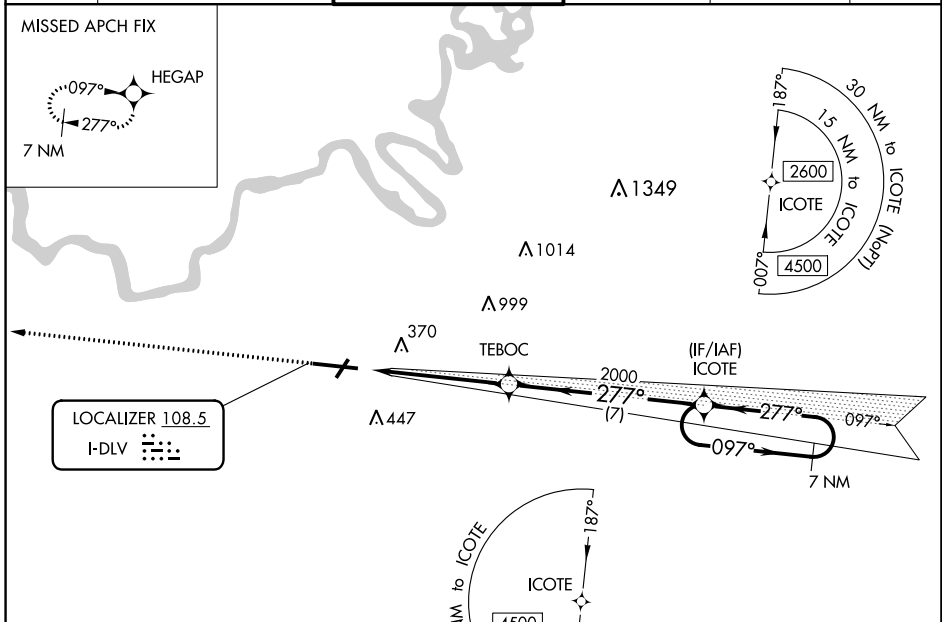


LOC I-DLV	APP CRS	Rwy Idg	<b>9020</b>
<b>108.5</b>	<b>277°</b>	TDZE	<b>197</b>
		Apt Elev	<b>221</b>

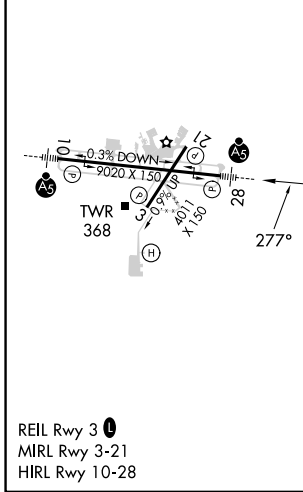
# ILS Z RWY 28

MONTGOMERY RGNL (DANNELLY FLD) (MGM)

<b>NA</b> GPS required. <b>ASR</b> For inop MALS, increase S-ILS 28 Cat E visibility to 3/4 mile.		<b>MALS</b> 	<b>MISSED APPROACH:</b> Climb to 3100 direct HEGAP and hold.		
<b>ATIS</b> <b>120.675</b>	<b>MONTGOMERY APP CON *</b> <b>124.0 363.025</b>	<b>DANNELLY TOWER *</b> <b>119.7 (CTAF) 360.85</b>	<b>GND CON</b> <b>121.7 348.6</b>	<b>CLNC DEL</b> <b>118.3 270.3</b>	<b>UNICOM</b> <b>122.95</b>

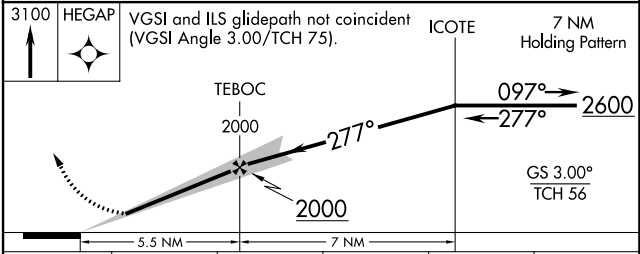


ELEV	221	TDZE	197
------	-----	------	-----



REIL Rwy 3  
 MIRL Rwy 3-21  
 HIRL Rwy 10-28

## GPS REQUIRED



CATEGORY	A	B	C	D	E
S-ILS 28		397-1/2	200 (200-1/2)		

# ILS Z RWY 28

SE-4, 18 APR 2024 to 16 MAY 2024

SE-4, 18 APR 2024 to 16 MAY 2024