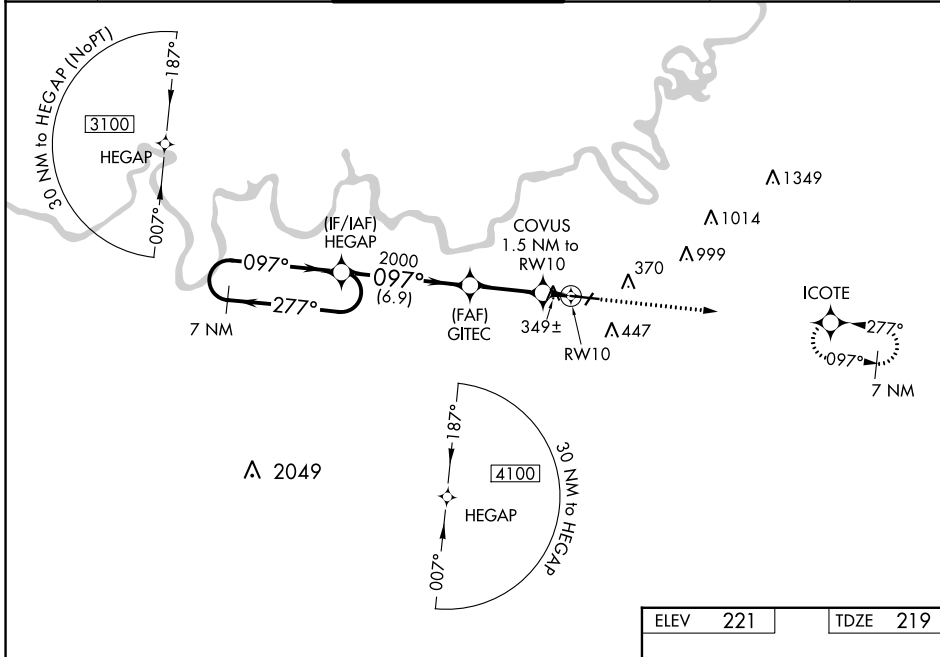


WAAS CH <b>50100</b> <b>W10A</b>	APP CRS <b>097°</b>	Rwy Idg TDZE Apt Elev	<b>9020</b> <b>219</b> <b>221</b>
--	------------------------	-----------------------------	---

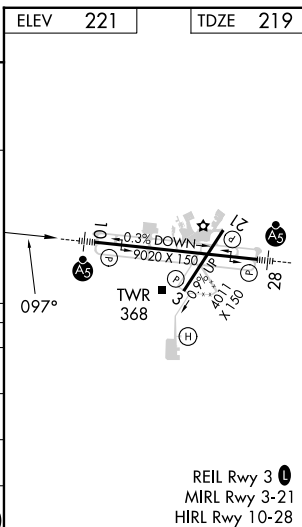
# RNAV (GPS) RWY 10

MONTGOMERY RGNL (DANNELLY FLD) (MGM)

RNP APCH.		DANNELLY TOWER ★		GND CON	CLNC DEL	UNICOM
▼ For uncompensated Baro-VNAV systems, LNAV/VNAV NA below -8°C (18°F) or above 54°C (130°F). For inop MALS, increase LPV Cat E visibility to RVR 4000; increase LNAV/VNAV Cat E visibility to RVR 5000; increase LNAV Cats C/D/E visibility to 1½ mile. Circling for Cat E NA north of Rwy 10-28. ⚠ ASR **RVR 1800 authorized with use of FD or AP or HUD to DA.		★ <b>119.7 (CTAF) 360.85</b>		<b>121.7 348.6</b>	<b>118.3 270.3</b>	<b>122.95</b>
ATIS	MONTGOMERY APP CON ★					
<b>120.675</b>	<b>124.0 363.025</b>					



VGSi and RNAV glidepath not coincident (VGSi Angle 3.00/TCH 64).						2600 ↑ ICOTE
7 NM Holding Pattern 3100 ← 277° 097° →	HEGAP 2000 *740	GITEC 2000	COVUS 1.5 NM to RW10 *1 NM to RW10	RW10	*LNAV only.	ICOTE
GP 3.00° TCH 50	6.9 NM	3.9 NM	0.5 NM	1 NM		
CATEGORY	A	B	C	D	E	
LPV DA **		419/24	200 (200-½)			
LNAV/VNAV DA		530/24	311 (400-½)			
LNAV MDA	600/24	381 (400-½)	600/35	381 (400-¾)		
CIRCLING	700-1	479 (500-1)	800-1½ 579 (600-1½)	860-2 639 (700-2)	860-2¼ 639 (700-2¼)	



SE-4, 18 APR 2024 to 16 MAY 2024

SE-4, 18 APR 2024 to 16 MAY 2024