

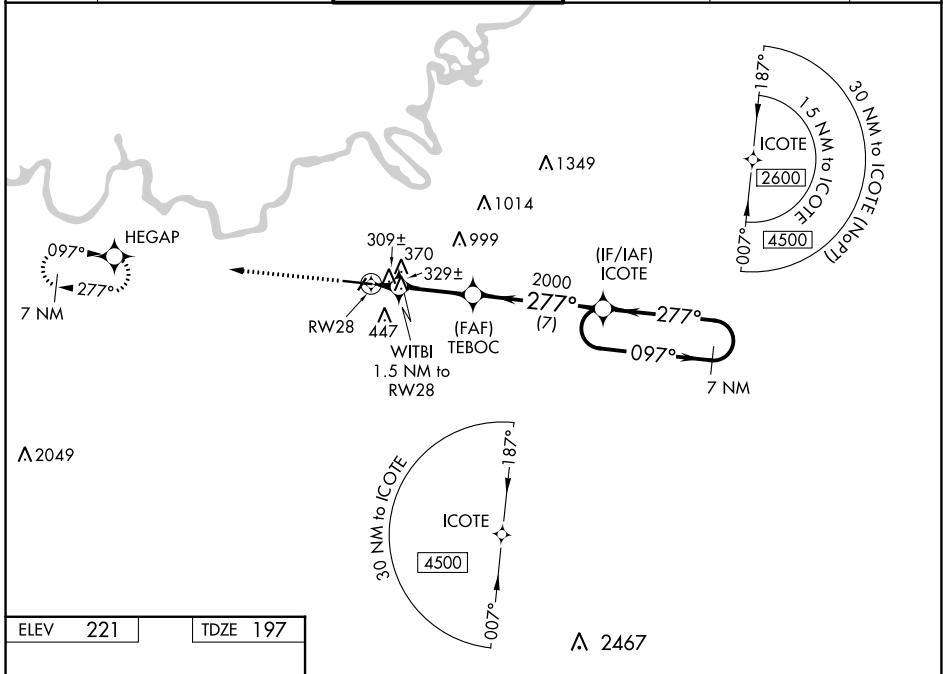
WAAS CH <b>56200</b> <b>W28A</b>	APP CRS <b>277°</b>	Rwy Idg TDZE Apt Elev	<b>9020</b> <b>197</b> <b>221</b>
--	------------------------	-----------------------------	---

**RNAV (GPS) RWY 28**  
MONTGOMERY RGNL (DANNELLY FLD) (MGM)

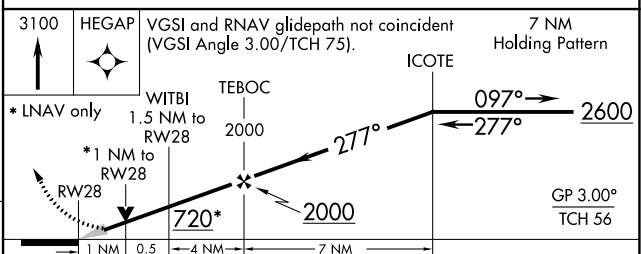
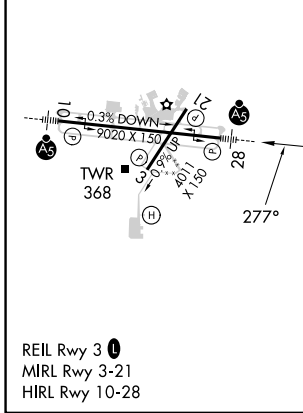
**⚠** For uncompensated Baro-VNAV systems, LNAV/VNAV NA below -8°C (18°F) or above 54°C (130°F). DME/DME RNP-0.3 NA. For inop MALS, increase LPV Cat E visibility to 3/4 mile; increase LNAV/VNAV Cat E visibility to 1 3/8 mile; increase LNAV Cat E visibility to 1 1/8 mile. Circling for Cat E NA north of Rwy 10-28.

**MALS**  
  
**MISSED APPROACH:**  
Climb to 3100 direct HEGAP and hold.

ATIS <b>120.675</b>	MONTGOMERY APP CON * <b>124.0 363.025</b>	DANNELLY TOWER * <b>119.7 (CTAF) 0 360.85</b>	GND CON <b>121.7 348.6</b>	CLNC DEL <b>118.3 270.3</b>	UNICOM <b>122.95</b>
------------------------	--	--	-------------------------------	--------------------------------	-------------------------



ELEV 221	TDZE 197
----------	----------



CATEGORY	A	B	C	D	E
LPV DA	397-1/2		200 (200-1/2)		
LNAV/VNAV DA	606-7/8		409 (400-7/8)		
LNAV MDA	580-1/2 383 (400-1/2)		580-5/8 383 (400-5/8)		
<b>C</b> CIRCLING	700-1 479 (500-1)		800-1/2 579 (600-1/2)	860-2 639 (700-2)	860-2 1/4 639 (700-2 1/4)

SE-4, 18 APR 2024 to 16 MAY 2024

SE-4, 18 APR 2024 to 16 MAY 2024