

WAAS CH 56633 W03A	APP CRS 034°	Rwy Idg TDZE Apt Elev	4011 221 221
----------------------------------------	------------------------	-----------------------------	-----------------------------------------

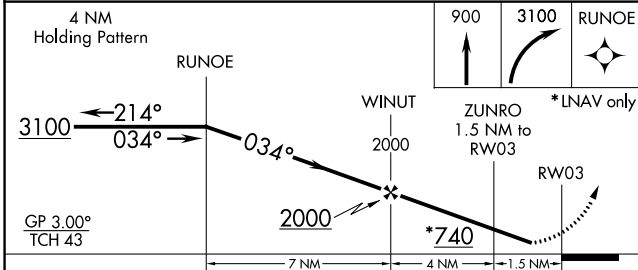
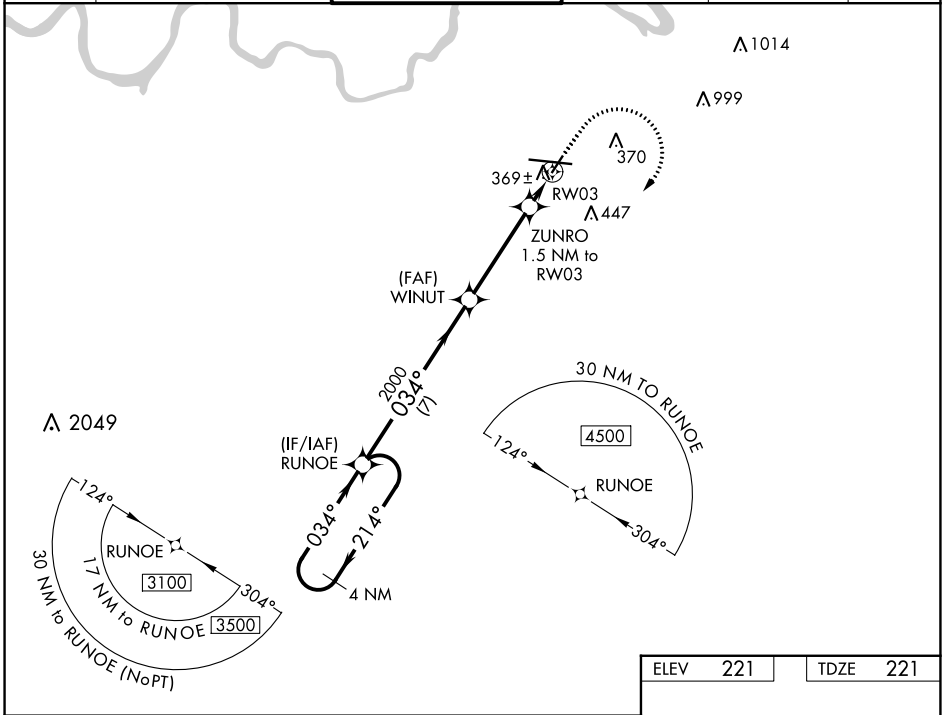
RNAV (GPS) RWY 3

MONTGOMERY RGNL (DANNELLY FLD) (MGM)

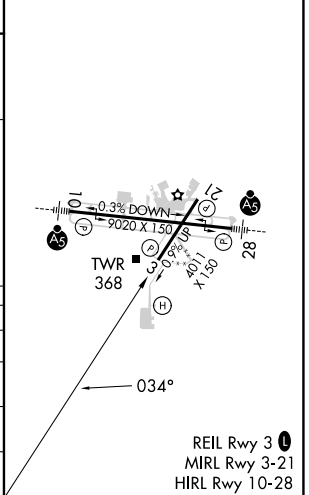
ASR For uncompensated Baro-VNAV systems, LNAV/VNAV NA below -8°C (18°F) or above 54°C (130°F). DME/DME RNP-0.3 NA.
Helicopter visibility reduction below ¾ SM NA.

MISSED APPROACH: Climb to 900 then climbing right turn to 3100 direct RUNOE and hold.

ATIS 120.675	MONTGOMERY APP CON * 124.0 363.025	DANNELLY TOWER * 119.7 (CTAF) 0 360.85	GND CON 121.7 348.6	CLNC DEL 118.3 270.3	UNICOM 122.95
------------------------	----------------------------------------------	--------------------------------------------------	-------------------------------	--------------------------------	-------------------------



ELEV 221	TDZE 221
----------	----------



CATEGORY	A	B	C	D
LPV DA		484-7/8	263 (300-7/8)	
LNAV/VNAV DA		550-1 1/8	329 (400-1 1/8)	
LNAV MDA	620-1	399 (400-1)	620-1 1/8	399 (400-1 1/8)
CIRCLING	700-1	479 (500-1)	800-1 1/2 579 (600-1 1/2)	860-2 639 (700-2)

REIL Rwy 3
MIRL Rwy 3-21
HIRL Rwy 10-28

SE-4, 18 APR 2024 to 16 MAY 2024

SE-4, 18 APR 2024 to 16 MAY 2024