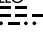



TERKS TWO ARRIVAL

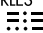
NORFOLK APP CON
 118.9 353.7
 KNGU ATIS
 118.425 342.0
 KNTU ATIS *
 317.6
 ORF ATIS
 127.15

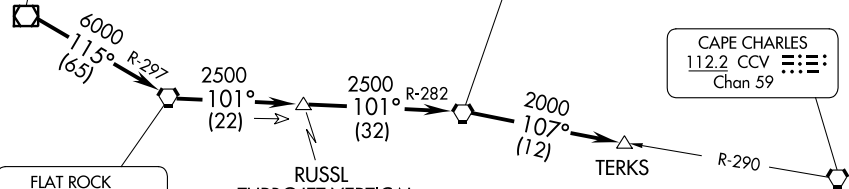
TURBOJET VERTICAL NAVIGATION PLANNING INFORMATION

Expect clearance to cross
 at 14,000'.

MONTEBELLO
 115.3 MOL 
 Chan 100

HARCUM
 108.8 HCM 
 Chan 25

CAPE CHARLES
 112.2 CCV 
 Chan 59



TURBOJET VERTICAL NAVIGATION PLANNING INFORMATION

Expect clearance to cross
 at 16,000'.

TURBOJET VERTICAL NAVIGATION PLANNING INFORMATION

Expect clearance to cross
 20 NM west at FL 210.

NOTE: For aircraft at or
 above 14,000' only.

NOTE: Chart not to scale.

NORFOLK NS
 (CHAMBERS FLD)

NORFOLK
 INTL

HAMPTON
 ROADS
 EXEC

OCEANA NAS/
 APOLLO SOUCEK
 FLD

SUFFOLK
 EXEC

CHESAPEAKE
 RGNL

ARRIVAL ROUTE DESCRIPTION

From over MOL VOR/DME via R-115 and FAK R-297 to FAK VORTAC, then via FAK R-101 and HCM R-282 to HCM VORTAC, then via HCM R-107 and CCV R-290 to TERKS INT. Expect radar vectors to the final approach course after the TERKS INT.

TERKS TWO ARRIVAL

NE-3, 18 APR 2024 to 16 MAY 2024

NE-3, 18 APR 2024 to 16 MAY 2024