

CRVZA ONE ARRIVAL (RNAV) Transition Routes

SAN ANTONIO, TEXAS

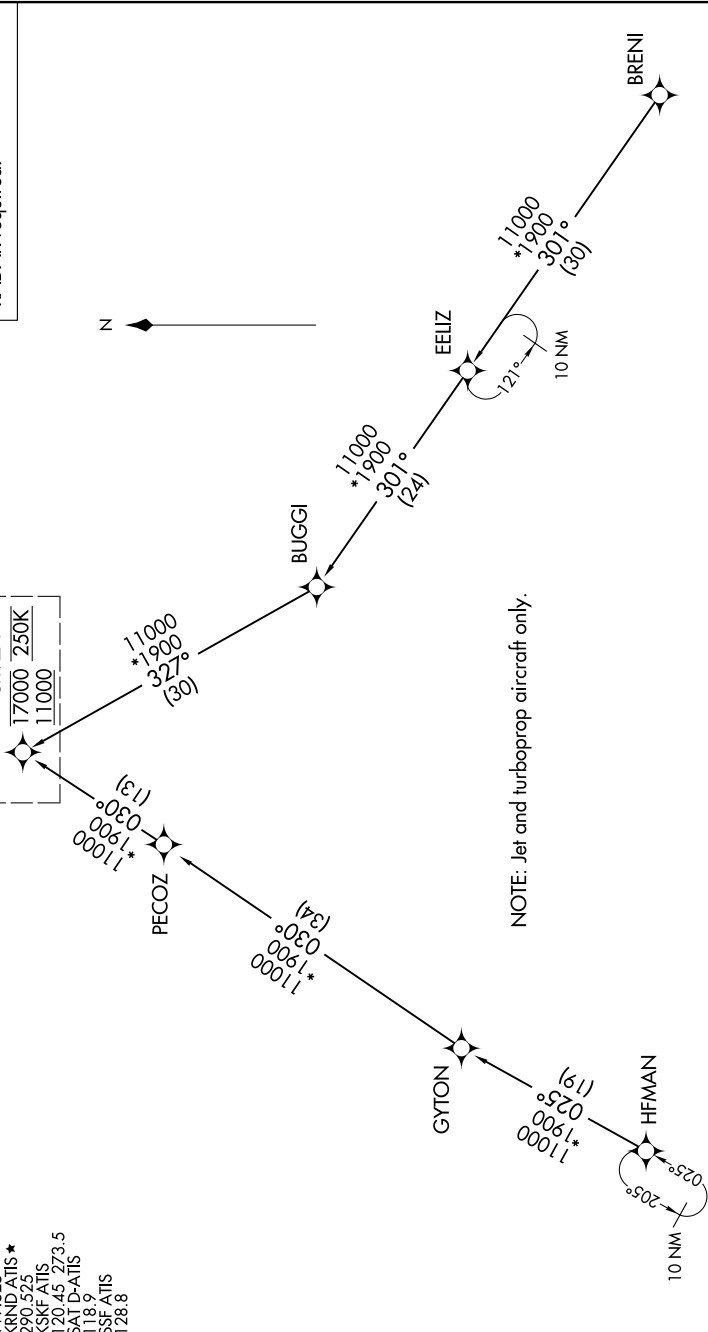
SC-3, 18 APR 2024 to 16 MAY 2024

SAN ANTONIO APP CON
 SAC 7 290.225
 B47 ATIS
 B47 315
 B47 315
 KRND ATIS *
 280.575
 KSKF ATIS
 120.45 273.5
 SAT D-ATIS
 118.9
 SSF ATIS
 128.8

See following page for Arrival Routes

CRVZA
17000 250K
11000

RNAV 1 - DME/DME/IRU or GPS.
 RADAR required.



NOTE: Jet and turboprop aircraft only.

BREN I TRANSITION (BREN I.CRZVA1)
 EELIZ TRANSITION (EELIZ.CRZVA1)
 HFMAN TRANSITION (HFMAN.CRZVA1)

(CONTINUED ON FOLLOWING PAGE)

NOTE: Chart not to scale.

SC-3, 18 APR 2024 to 16 MAY 2024

CRVZA ONE ARRIVAL (RNAV) Transition Routes

SAN ANTONIO, TEXAS