

HI-ILS or LOC/DME Z RWY 16

LOC I-SKF 110.1	APCH CRS 158°	Rwy Idg 11,550
		TDZE 690
		Arprt Elev 690

AL-371 [USAF]

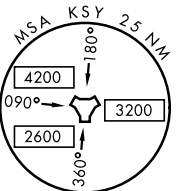
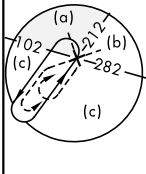
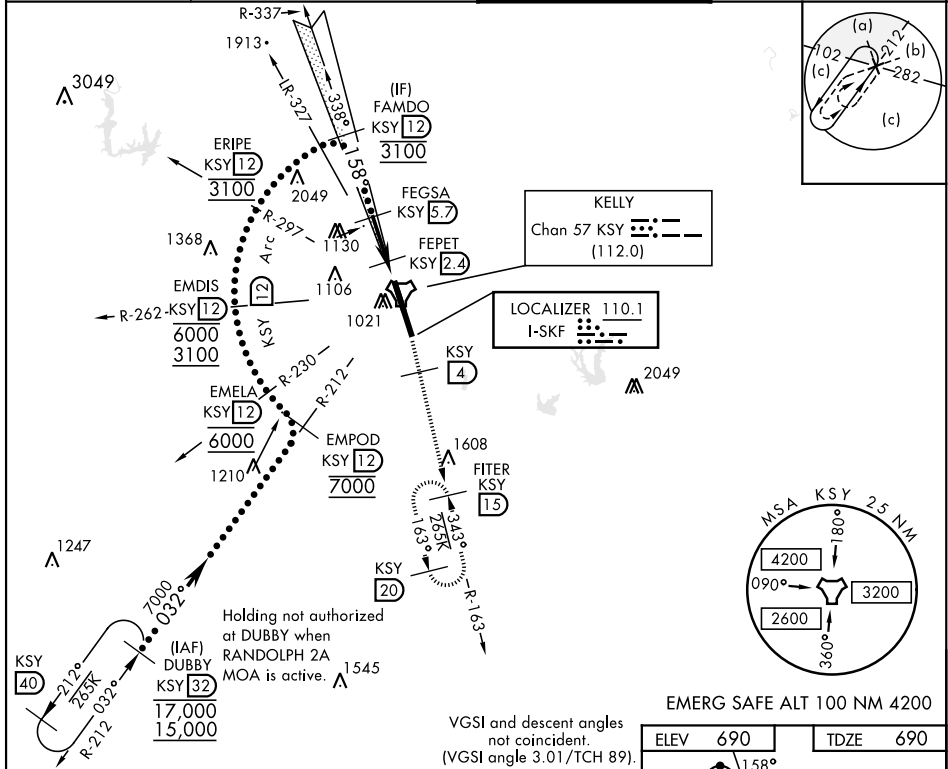
KELLY FLD (KSKF)

▼ **When ALS inop, increase RVR to 40 and vis to ¾ mile.
 ***When ALS inop, increase RVR to 60 and vis to 1½ miles.
 ***Circling not authorized E of Rwy 16-34.

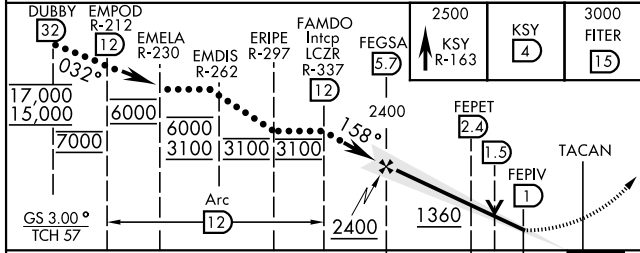
ALSF-1

MISSED APPROACH: Climb to 2500 via KSY R-163 until 4 DME, then continue climb to 3000 to FITER/1.5 DME and hold.

ATIS 120.45 273.5	SAN ANTONIO APP CON 118.05 353.5	KELLY TOWER 124.3 322.35	GND CON 121.8 289.4
-----------------------------	--	------------------------------------	-------------------------------

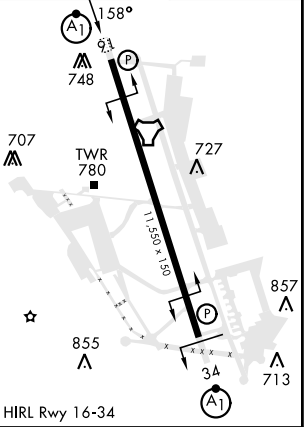


EMERG SAFE ALT 100 NM 4200



ELEV 690	TDZE 690
----------	----------

CATEGORY	C	D	E
S-ILS 16 *	890/24	200 (200-½)	
S-LOC/ DME 16 **	1080/35	390 (400-¾)	
CIRCLING ***	1340-1¾ 650 (700-1¾)	1400-2¼ 710 (800-2¼)	1900-3 1210 (1300-3)



HI-ILS or LOC/DME Z RWY 16

SC-3, 18 APR 2024 to 16 MAY 2024

SC-3, 18 APR 2024 to 16 MAY 2024