

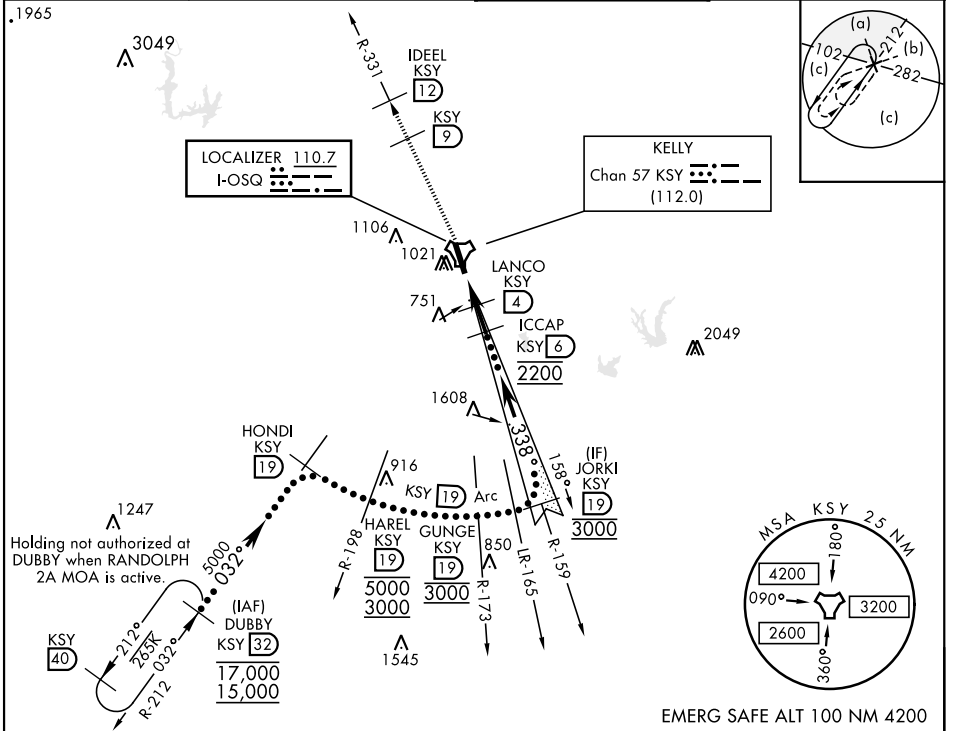
HI-ILS or LOC/DME Z RWY 34

LOC I-OSQ 110.7	APCH CRS 338°	Rwy Idg 11,550 TDZE 660 Arprt Elev 690	AL-371 [USAF]	KELLY FLD (KSKF)
---------------------------	-------------------------	---	---------------	------------------

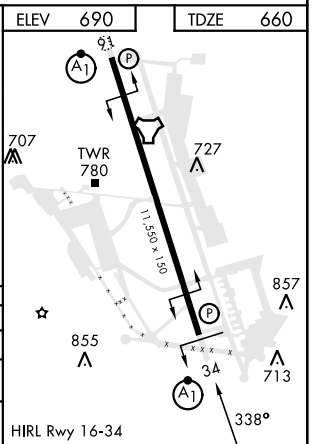
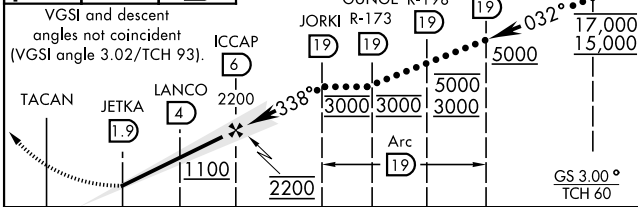
* When ALS inop, increase RVR to 40 and vis to ¼ mile.
 ** When ALS inop, increase RVR to 55 and vis to 1 mile.
 *** Circling not authorized E of Rwy 16-34.

MISSED APPROACH: Climbing to 2500 via KSY TACAN R-331 until 9 DME, cross 9 DME at 2500, then continue climb to 3000 to IDEEL/12.0 DME. Expect ATC instructions.

ATIS 120.45 273.5	SAN ANTONIO APP CON 118.05 353.5	TOWER 124.3 322.35	GND CON 121.8 289.4
-----------------------------	--	------------------------------	-------------------------------



2500 KSY R-331 (9)	3000 IDEEL KSY (12)	DUBBY R-212 (32)	ELEV 690	TDZE 660
--------------------	---------------------	------------------	----------	----------



CATEGORY	C	D	E
S-ILS 34*	860/24	200	(200-½)
S-LOC/DME 34**	1020/30	360	(400-%)
CIRCLING***	1340-1¾ 650 (700-1¾)	1400-2¼ 710 (800-2¼)	1900-3 1210 (1300-3)

HI-ILS or LOC/DME Z RWY 34

SC-3, 18 APR 2024 to 16 MAY 2024

SC-3, 18 APR 2024 to 16 MAY 2024