

# HI-TACAN Z RWY 16

TACAN KSY Chan <b>57</b>	APCH CRS <b>151°</b>	Rwy ldg <b>11,550</b> TDZE <b>690</b> Arprt Elev <b>690</b>
-----------------------------	-------------------------	---

AL-371 [USAF]

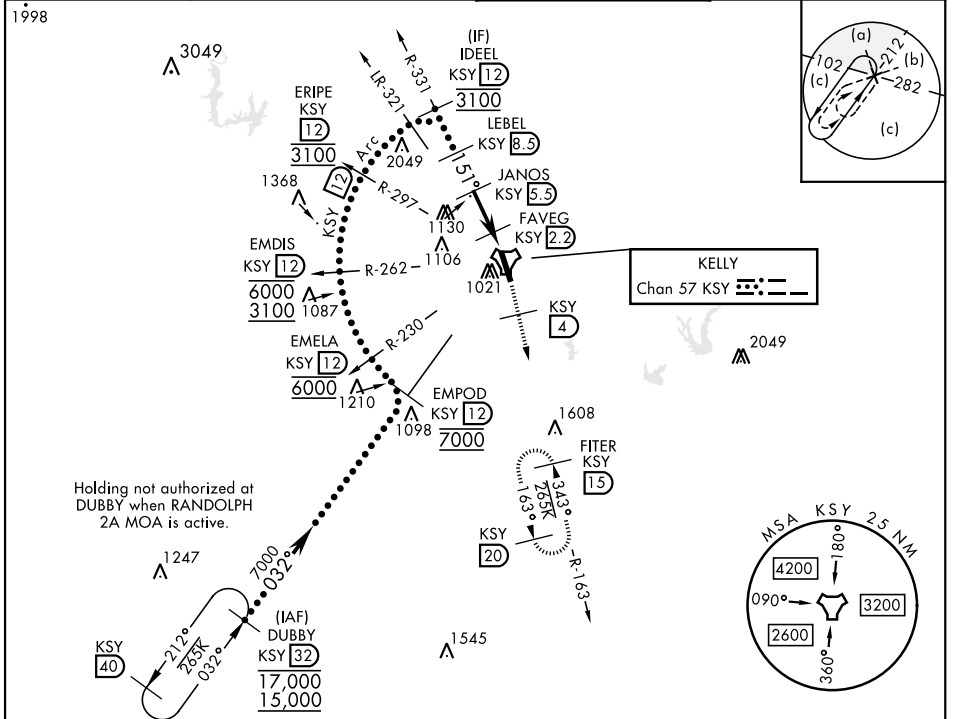
KELLY FLD (KSKF)

▼ \* When ALS inop, increase RVR to 60 and vis to 1½ miles.  
 \*\* Circling not authorized E of Rwy 16-34.

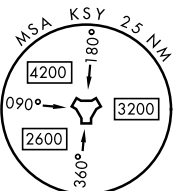


MISSED APPROACH: Climb to 2500 via KSY TACAN R-163 until 4 DME, then continue climb to 3000 to FITER/15 DME and hold.

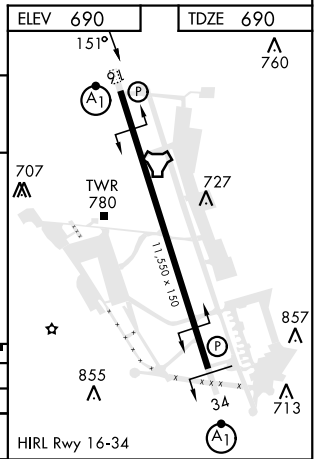
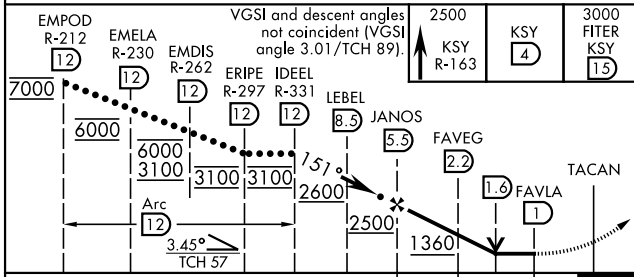
ATIS <b>120.45 273.5</b>	SAN ANTONIO APP CON <b>118.05 353.5</b>	TOWER <b>124.3 322.35</b>	GND CON <b>121.8 289.4</b>
-----------------------------	--	------------------------------	-------------------------------



Holding not authorized at DUBBY when RANDOLPH 2A MOA is active.



**EMERG SAFE ALT 100 NM 4200**



EMPOD R-212 (12)	EMELA R-230 (12)	EMDIS R-262 (12)	ERIPLE (12)	IDEEL R-331 (12)	LEBEL (8.5)	JANOS (5.5)	FAVEG (2.2)	FAVLA (1)	TACAN
VGSI and descent angles not coincident (VGSI angle 3.01/TCH 89).					2500 KSY R-163 (4)	3000 FITER KSY (15)			
CATEGORY	C		D		E				
S-16*	1100/40		410		[500-34]				
CIRCLING**	1340-134 650 (700-134)		1400-214 710 (800-214)		1900-3 1210 (1300-3)				

# HI-TACAN Z RWY 16

SC-3, 18 APR 2024 to 16 MAY 2024

SC-3, 18 APR 2024 to 16 MAY 2024