

HI-TACAN Z RWY 34

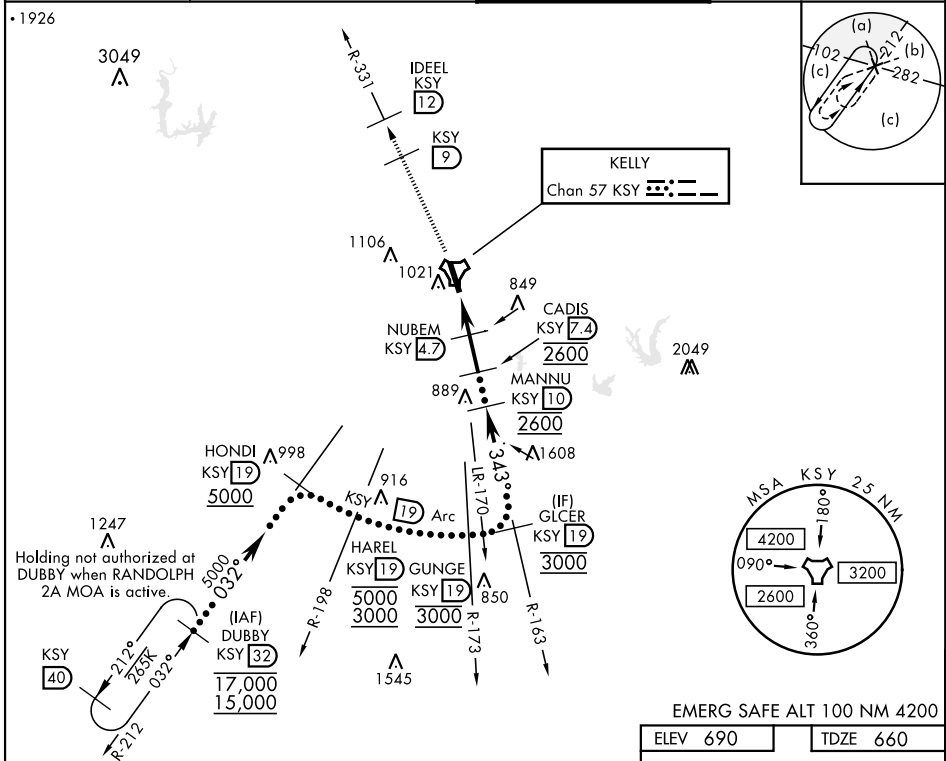
TACAN KSY Chan 57	APCH CRS 343°	Rwy ldg 11,550 TDZE 660 Arprt Elev 690	AL-371 [USAF]	KELLY FLD (KSKF)
----------------------	------------------	--	---------------	------------------

▼ * When ALS inop, increase vis to 1¼ miles.
 ** Circling not authorized E of Rwy 16-34.

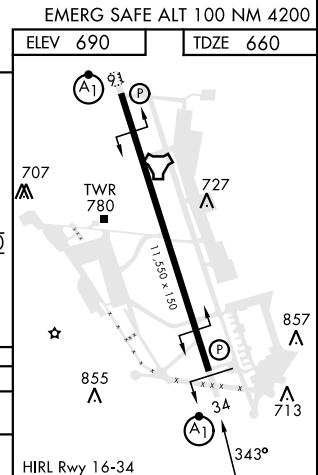


MISSED APPROACH: Climb to 2500 via KSY TACAN R-331 until 9 DME, cross 9 DME at 2500, then continue climb to 3100 to IDEEL/12 DME. Expect ATC instructions.

ATIS 120.45 273.5	SAN ANTONIO APP CON 118.05 353.5	TOWER 124.3 322.35	GND CON 121.8 289.4
-----------------------------	--	------------------------------	-------------------------------



2500 KSY R-331	KSY R-331 9	3100 IDEEL KSY 12	VGSI and descent angles not coincident (VGSI angle 3.02/TCH 93).
TACAN	FRSTY 1.9	NUBEM 4.7	CADIS 7.4
	2.5		MANNU 10
			GLCER 19
			3000
			2600
			2600
			1740
			2.89°
			TCH 60
CATEGORY	C	D	E
S-34 *	1100/40	440	(500-¾)
CIRCLING **	1340-1¾ 650 (700-1¾)	1400-2¼ 710 (800-2¼)	1900-3 1210 (1300-3)



HI-TACAN Z RWY 34

SC-3, 18 APR 2024 to 16 MAY 2024

SC-3, 18 APR 2024 to 16 MAY 2024