

TACAN Y RWY 34

TACAN KSY Chan 57	APCH CRS 343°	Rwy Idg 11,550 TDZE 660 Arprt Elev 690
----------------------	------------------	--

AL-371 [USAF]

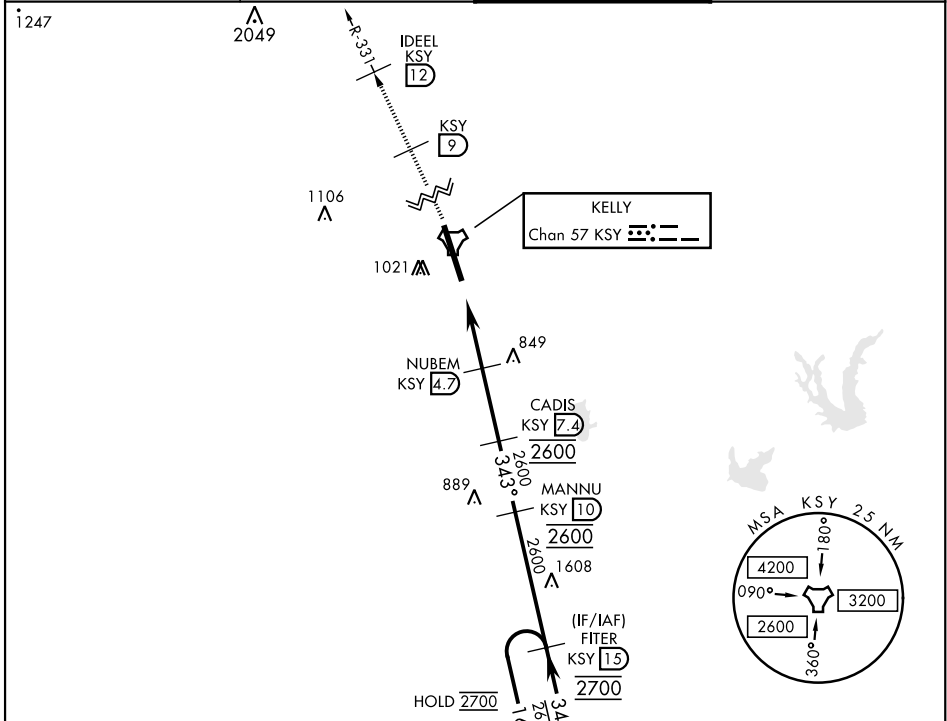
KELLY FLD (KSKF)

▼ * When ALS inop, increase CAT AB RVR to 55 vis to 1 mile, CAT CDE vis to 1 1/4 miles.
 ** Circling not authorized E of Rwy 16-34.

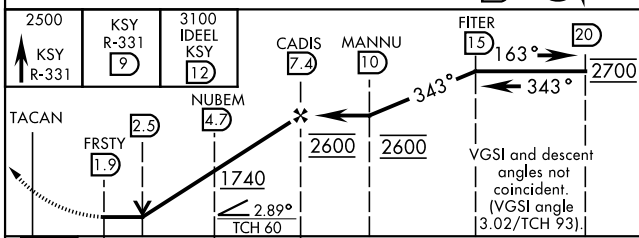
 ALSF-1
A1

 MISSED APPROACH: Climb to 2500 via KSY TACAN R-331 until 9 DME, cross 9 DME at 2500, then continue climb to 3100 to IDEEL/12 DME. Expect ATC instructions.

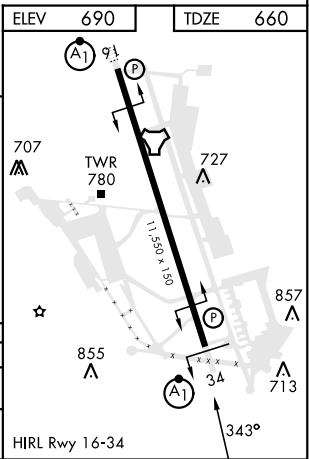
ATIS 120.45 273.5	SAN ANTONIO APP CON 118.05 353.5	TOWER 124.3 322.35	GND CON 121.8 289.4
-----------------------------	--	------------------------------	-------------------------------



EMERG SAFE ALT 100 NM 4200



CATEGORY	A	B	C	D	E
S-34 *	1100/24	440 (500-1/2)	1100/40	440	(500-3/4)
CIRCLING **	1200-1 510 (600-1)	1280-1 590 (600-1)	1340-1 1/4 650 (700-13/4)	1400-2 1/4 710 (800-21/4)	1900-3 1210 (1300-3)



TACAN Y RWY 34

SC-3, 18 APR 2024 to 16 MAY 2024

SC-3, 18 APR 2024 to 16 MAY 2024