

# HI-ILS or LOC W RWY 15

LOC I-JKC <b>108.9</b>	APCH CRS <b>149°</b>	Rwy ldg <b>11,758</b> THRE <b>163</b> Arprt Elev <b>165</b>
---------------------------	-------------------------	--

[USAF]

BARKSDALE AFB (KBAD)

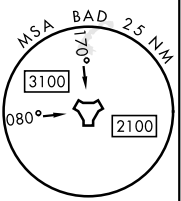
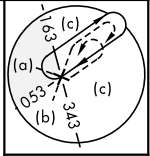
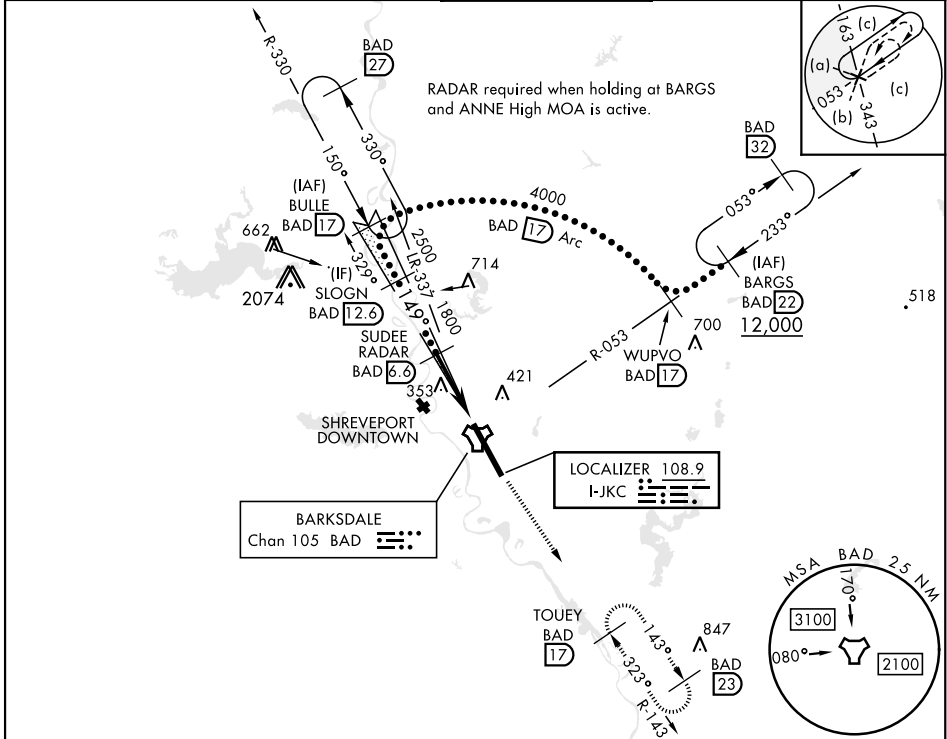
RADAR or DME required



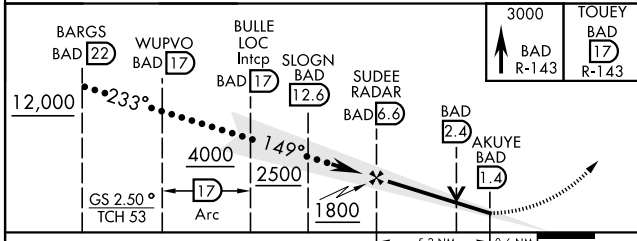
MISSED APPROACH: Climb to 3000 via BAD R-143 direct TOUEY and hold.

\* When ALS inop, increase CAT CDE RVR to 40 and vis to 3/4 mile.  
 \*\* When ALS inop, increase CAT CDE vis to 1 3/8 miles.  
 \*\*\* Circling not authorized W of Rwy.

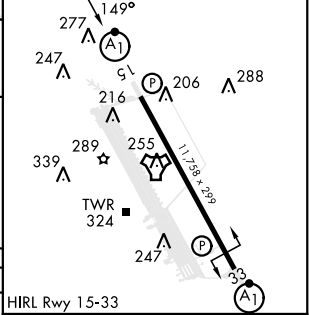
ATIS <b>307.025</b>	SHREVEPORT APP CON 320°-152° <b>123.75 360.725</b> 153°-319° <b>119.9 335.55</b>	TOWER ★ <b>128.25 278.3</b>	GND CON <b>121.8 253.5</b>	ASR
------------------------	--	--------------------------------	-------------------------------	-----



EMERG SAFE ALT 100 NM 3300



ELEV 165	THRE 163
----------	----------



CATEGORY	C	D	E
S-ILS 15 *	363/24	200	(200-1/2)
S-LOC 15 **	640/50	477	(500-1)
*** CIRCLING	NOT AUTHORIZED	760-2 595 (600-2)	780-2 1/4 615 (700-2 1/4)

HIRL Rwy 15-33					
FAF to MAP 5.2 NM					
Knots	120	140	160	180	200
Min:Sec	2:36	2:14	1:57	1:44	1:34

# HI-ILS or LOC W RWY 15

SC-4, 18 APR 2024 to 16 MAY 2024

SC-4, 18 APR 2024 to 16 MAY 2024