

# HI-ILS or LOC Z RWY 33

LOC I-BAD <b>109.9</b>	APCH CRS <b>329°</b>	Rwy ldg <b>11,758</b> THRE <b>161</b> Arpt Elev <b>165</b>
---------------------------	-------------------------	---

[USAF]

BARKSDALE AFB (KBAD)

RADAR or DME required

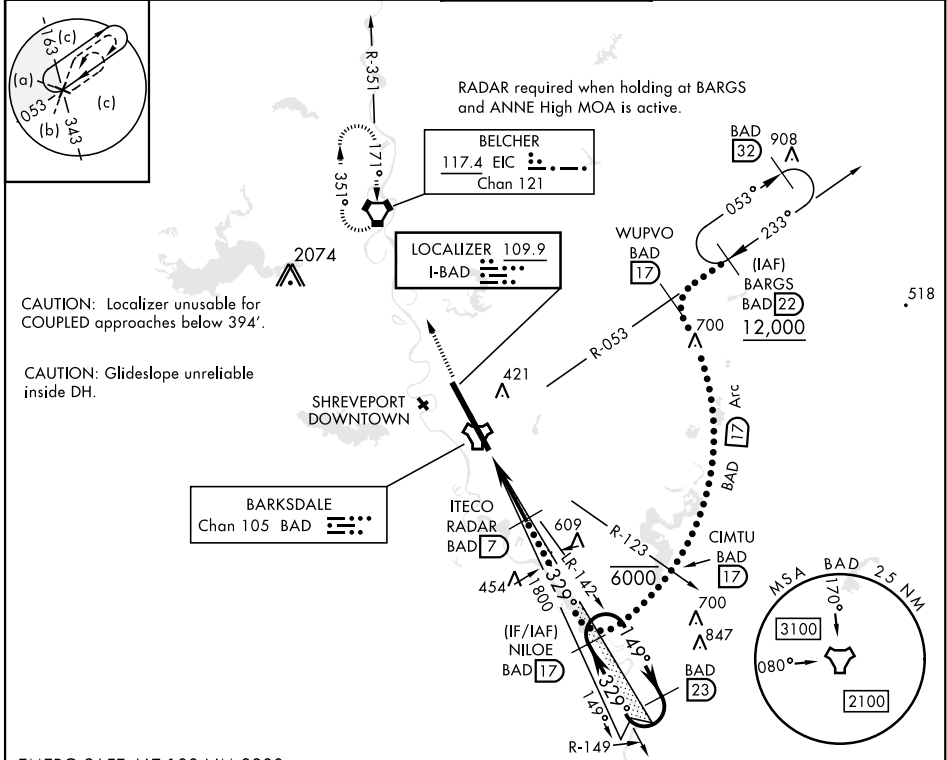
ALSF-1



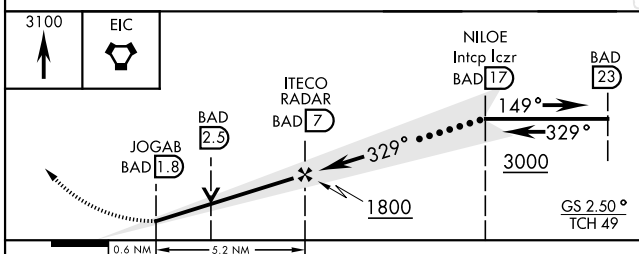
MISSED APPROACH: Climb to 3100 direct to EIC VORTAC and hold.

\*When ALS inop, increase CAT CDE RVR to 40 and vis to 3/4 mile.  
 \*\*When ALS inop, increase CAT CDE RVR to 60 and vis to 1 1/8 miles.  
 \*\*\* Circling not authorized W of Rwy.

ATIS <b>307.025</b>	SHREVEPORT APP CON 320°-152° <b>123.75</b> <b>360.725</b> 153°-319° <b>119.9</b> <b>335.55</b>	TOWER* <b>128.25</b> <b>278.3</b>	GND CON <b>121.8</b> <b>253.5</b>	ASR
------------------------	--	--------------------------------------	--------------------------------------	-----

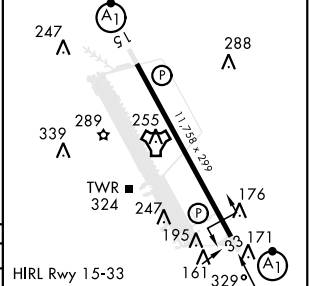


EMERG SAFE ALT 100 NM 3300



ELEV	165	THRE	161
------	-----	------	-----

CATEGORY	C	D	E
S-ILS 33*	361/24	200	(200-1/2)
S-LOC 33**	560/35	399	(400-%)
*** CIRCLING	NOT AUTHORIZED	760-2 595 (600-2)	780-2 1/4 615 (700-2 1/4)



Knots	120	140	160	180	200
Min:Sec	2:36	2:14	1:57	1:44	1:34

# HI-ILS or LOC Z RWY 33

SC-4, 18 APR 2024 to 16 MAY 2024

SC-4, 18 APR 2024 to 16 MAY 2024