

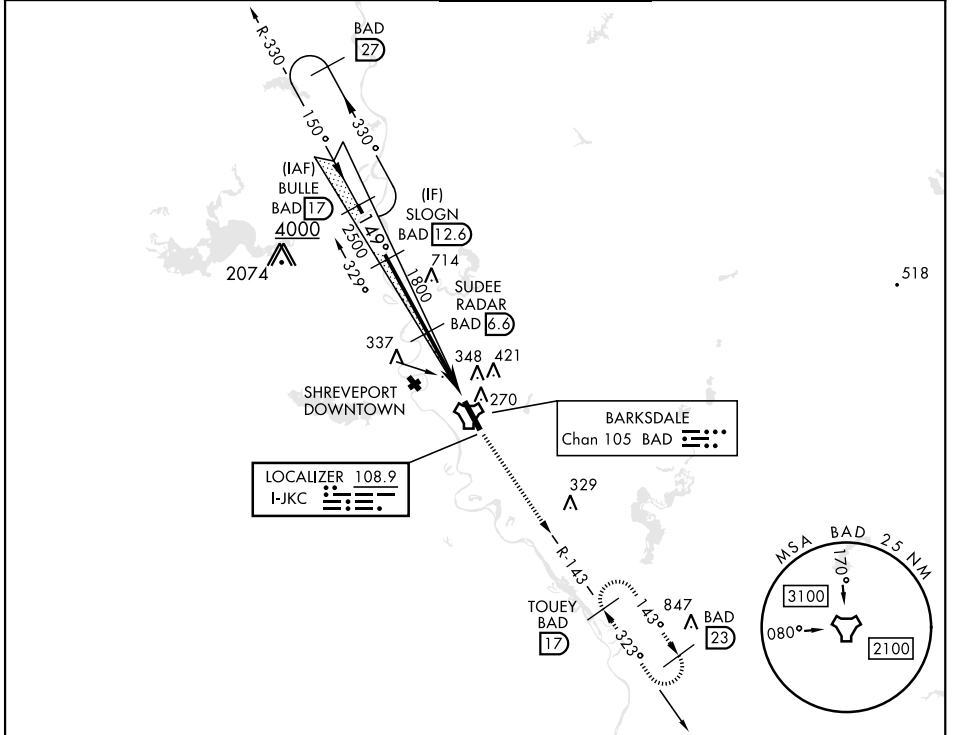
ILS or LOC Z RWY 15

LOC I-JKC 108.9	APCH CRS 149°	Rwy Idg 11,758 THRE 163 Arprt Elev 165
---------------------------	-------------------------	---

[USAF]

BARKSDALE AFB (KBAD)

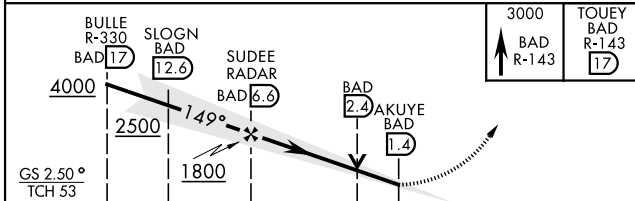
RADAR or DME required		ALSF-1 	MISSED APPROACH: Climb to 3000 via BAD R-143 direct TOUEY and hold.			
*When ALS inop, increase RVR to 40 and vis to 3/4 mile. **When ALS inop, increase CAT AB RVR to 55 and vis to 1 mile, CAT CDE vis to 1 3/8 miles. *** Circling not authorized W of Rwy.			ATIS 307.025	SHREVEPORT APP CON 320°-152° 123.75 360.725 153°-319° 119.9 335.55	TOWER ★ 128.25 278.3	GND CON 121.8 253.5



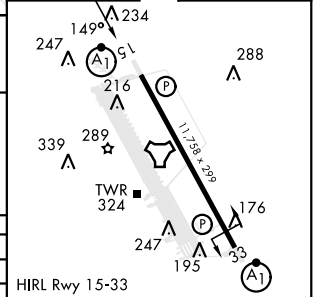
SC-4, 18 APR 2024 to 16 MAY 2024

SC-4, 18 APR 2024 to 16 MAY 2024

EMERG SAFE ALT 100 NM 3300



ELEV	165	THRE	163
------	-----	------	-----



CATEGORY	A	B	C	D	E
S-ILS 15*	363/24		200	(200-1/2)	
S-LOC 15**	640/24	477 (500-1/2)	640/50	477 (500-1)	
*** CIRCLING	NOT AUTHORIZED			760-2 595 (600-2)	780-2 1/4 615 (700-2 1/4)

FAF to MAP 5.2 NM					
Knots	60	90	120	150	180
Min:Sec	5:12	3:28	2:36	2:05	1:44

ILS or LOC Z RWY 15