

TACAN Y RWY 15

TACAN BAD Chan 105	APCH CRS 158°	Rwy Idg 11,758 THRE 163 Arpt Elev 165
------------------------------	-------------------------	--

[USAF]

BARKSDALE AFB (KBAD)

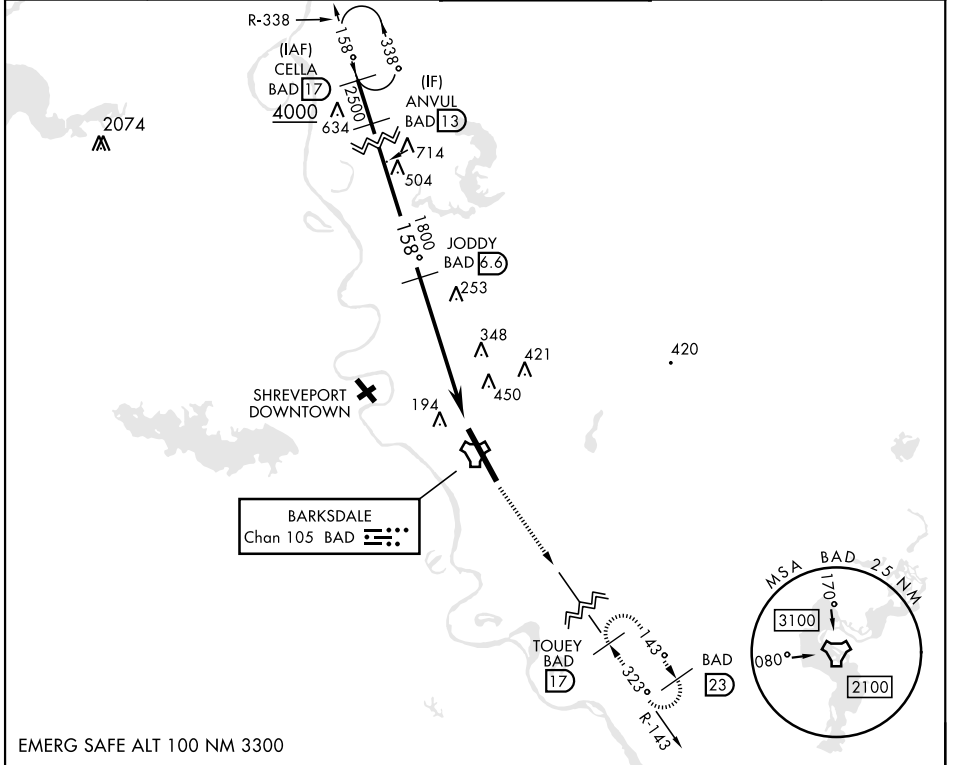
* When ALS inop, increase CAT AB RVR to 55 and vis to 1 mile
CAT CDE vis to 1 3/4 miles.

** Circling not authorized W of Rwy.



MISSED APPROACH: Climb to 3000 via
BAD R-143 direct TOUEY and hold.

ATIS 307.025	SHREVEPORT APP CON 320°-152° 123.75 360.725 153°-319° 119.9 335.55	TOWER * 128.25 278.3	GND CON 121.8 253.5	ASR
------------------------	--	--------------------------------	-------------------------------	-----



SC-4, 18 APR 2024 to 16 MAY 2024

SC-4, 18 APR 2024 to 16 MAY 2024

EMERG SAFE ALT 100 NM 3300

CELLA R-338 17 4000	ANVUL 13 2500	JODDY 6.6 1800	TACAN HAXOG 1.4	3000 BAD R-143	TOUEY BAD R-143 17	ELEV 165	THRE 163
CATEGORY	A	B	C	D	E		
S-15 *	800/24	637 (700-1/2)	800-1 3/8	637 (700-1 3/8)			
** CIRCLING	NOT AUTHORIZED			800-2 635 (700-2)	800-2 1/4 635 (700-2 1/4)	HIRL Rwy 15-33	

TACAN Y RWY 15