

BOSSIER CITY, LOUISIANA

# TACAN Y RWY 33

TACAN BAD Chan <b>105</b>	APCH CRS <b>323°</b>	Rwy ldg <b>11,758</b> THRE <b>161</b> Arprt Elev <b>165</b>
------------------------------	-------------------------	---

[USAF]

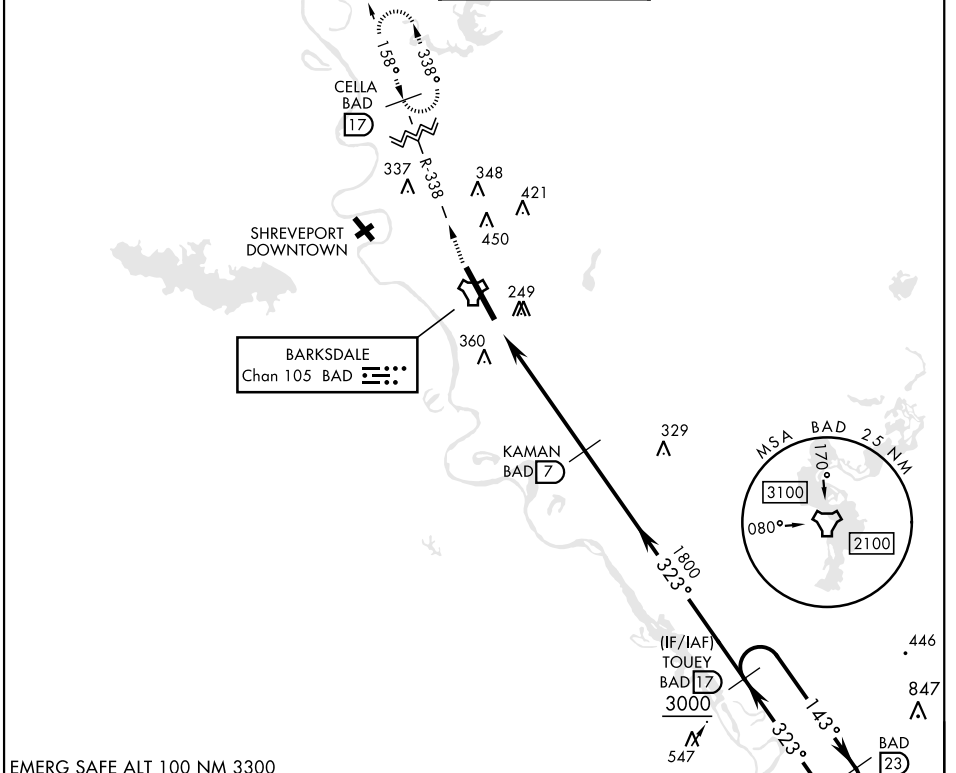
BARKSDALE AFB (KBAD)



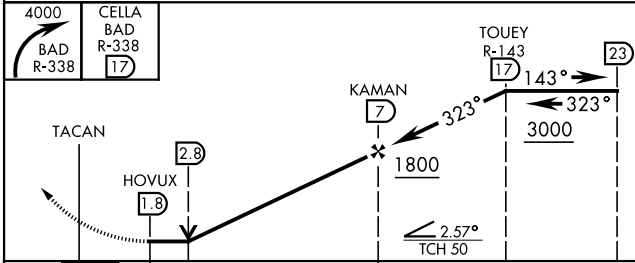
MISSED APPROACH: Climb to 4000 via BAD R-338 direct CELLA and hold.

\* When ALS inop, increase CAT AB RVR to 55 and vis to 1 mile, CAT CDE vis to 1 3/8 miles.  
 \*\* Circling not authorized W of Rwy.

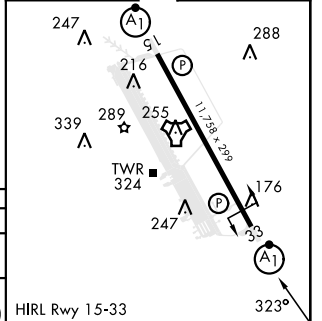
ATIS <b>307.025</b>	SHREVEPORT APP CON 320°-152° <b>123.75 360.725</b> 153°-319° <b>119.9 335.55</b>	TOWER * <b>128.25 278.3</b>	GND CON <b>121.8 253.5</b>	ASR
------------------------	--	--------------------------------	-------------------------------	-----



EMERG SAFE ALT 100 NM 3300



ELEV	165	THRE	161
------	-----	------	-----



CATEGORY	A	B	C	D	E
S-33 *	640/24	479 (500-1/2)	640/50	479 (500-1)	
CIRCLING **	NOT AUTHORIZED		760-2 595 (600-2)	780-2 1/4 615 (700-2 1/4)	

HIRL Rwy 15-33

BOSSIER CITY, LOUISIANA

32° 30' N-93° 40' W

BARKSDALE AFB (KBAD)

Amdt 6 25JUN15

# TACAN Y RWY 33

SC-4, 18 APR 2024 to 16 MAY 2024

SC-4, 18 APR 2024 to 16 MAY 2024