

VALPARAISO, FLORIDA

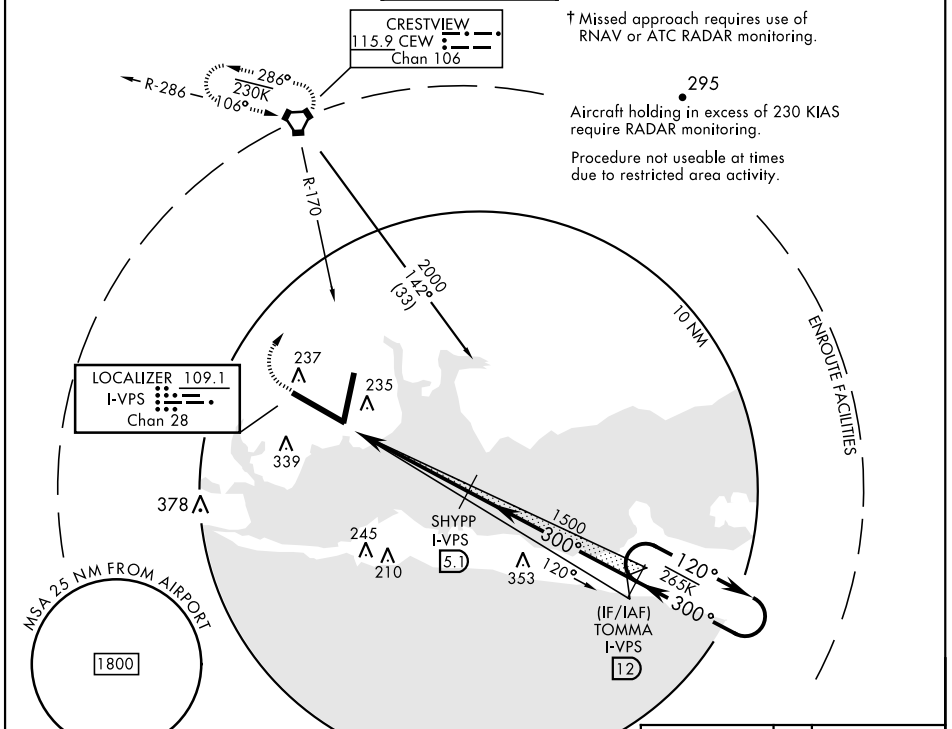
ILS Y or LOC Y RWY 30

LOC I-VPS 109.1 Chan 28	APCH CRS 300°	Rwy Idg 11,987 THRE 49 Arprt Elev 84
---	-------------------------	---

AL-436 [USAF] EGLIN AFB/DESTIN-FT WALTON BEACH(KVPS)

DME or RADAR required. (for LOC approach)		ALS-F1 	† MISSED APPROACH: Climb straight ahead to 600, then climbing right turn to 3000, intercept CEW VORTAC R-170 to CEW and hold.
* When ALS inop, increase RVR to 40, vis to 3/4 mile. ** When ALS inop, increase RVR to 55, vis to 1 mile.			

ATIS * 134.625 273.5	APP CON 125.1 281.45 271°-089° 132.1 360.6 090°-270°	TOWER 118.2 353.65	GND CON 121.8 335.8	CLNC DEL 127.7 377.2
--------------------------------	--	------------------------------	-------------------------------	--------------------------------



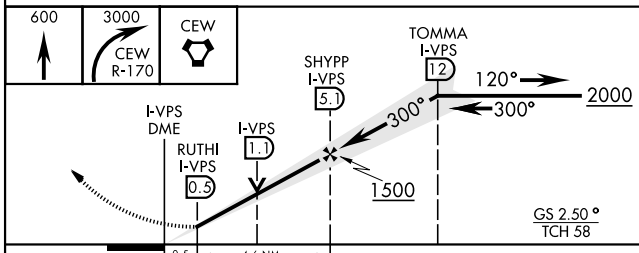
† Missed approach requires use of RNAV or ATC RADAR monitoring.

295
Aircraft holding in excess of 230 KIAS require RADAR monitoring.
Procedure not useable at times due to restricted area activity.

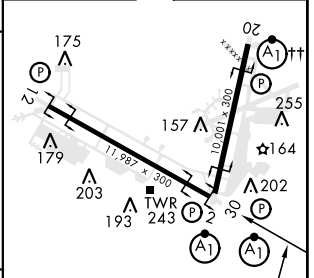
SE-3, 18 APR 2024 to 16 MAY 2024

SE-3, 18 APR 2024 to 16 MAY 2024

EMERG SAFE ALT 100 NM 3600



ELEV 84	THRE 49
---------	---------



CATEGORY	A	B	C	D	E
S-ILS 30*	249/24		200	(200-1/2)	
S-LOC 30**	420/24	371 (400-1/2)	420/35	371 (400-5/8)	
CIRCLING	660-1	576 (600-1)	760-2	760-2 1/4	760-2 1/2
			676 (700-2)	676 (700-2 1/4)	676 (700-2 1/2)

HIRL all rwys
†† Rwy 20 apch lgt 1500' nonstandard.

FAF to MAP 4.6 NM					
Knots	60	90	120	150	180
Min:Sec	4:36	3:04	2:18	1:50	1:32

VALPARAISO, FLORIDA
Orig 26MAY16

30°29'N-86°32'W

EGLIN AFB/DESTIN-FT WALTON BEACH(KVPS)

ILS Y or LOC Y RWY 30