

# I LS Z or LOC Z RWY 30

LOC I-VPS <b>109.1</b>	APCH CRS <b>300°</b>	Rwy Ldg THRE <b>11,987</b> 49 84	AL-436 [USAF]	EGLIN AFB/DESTIN-FT WALTON BEACH(KVPS)
---------------------------	-------------------------	---	---------------	--

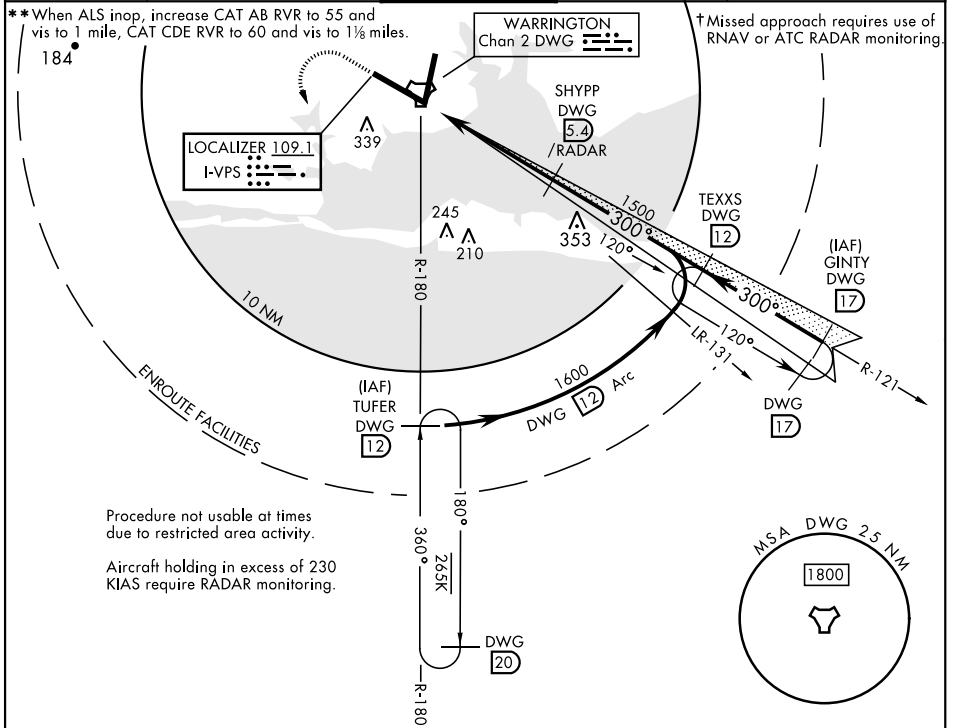
DME or RADAR required. (for LOC approach)

\*When ALS inop, increase RVR to 40 and vis to 3/4 mile.

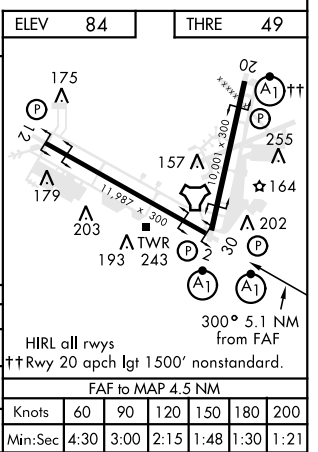
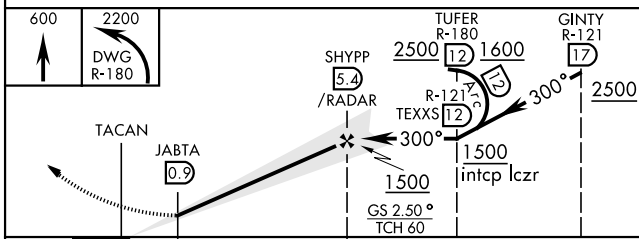
ALS-1

† MISSED APPROACH: Climb straight ahead to 600 then climbing left turn to 2200 direct TUFER DWG R-180/12 DME and hold.

ATIS ★ <b>134.625 273.5</b>	APP CON <b>125.1 281.45 271°-089°</b> <b>132.1 360.6 090°-270°</b>	TOWER <b>118.2 353.65</b>	GND CON <b>121.8 335.8</b>	CLNC DEL <b>127.7 377.2</b>
--------------------------------	--	------------------------------	-------------------------------	--------------------------------



EMERG SAFE ALT 100 NM 3600



CATEGORY	A	B	C	D	E
S-ILS 30 *	249/24		200	(200-1/2)	
S-LOC 30 **	440/24	391 (400-1/2)	440/35	391 (400-5/8)	
CIRCLING	660-1	576 (600-1)	760-2	760-2 1/4	760-2 1/2
			676 (700-2)	676 (700-2 1/4)	676 (700-2 1/2)

# I LS Z or LOC Z RWY 30

SE-3, 18 APR 2024 to 16 MAY 2024

SE-3, 18 APR 2024 to 16 MAY 2024