

VALPARAISO, FLORIDA

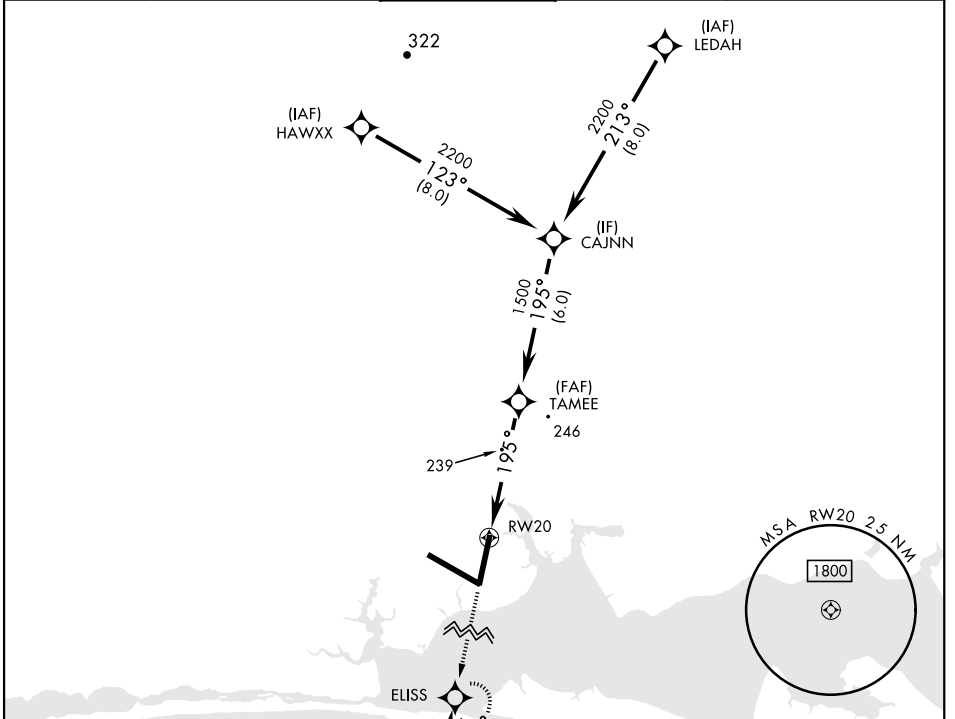
RNAV (GPS) Z RWY 20

AL-436 [USAF] EGLIN AFB/DESTIN-FT WALTON BEACH (KVPS)

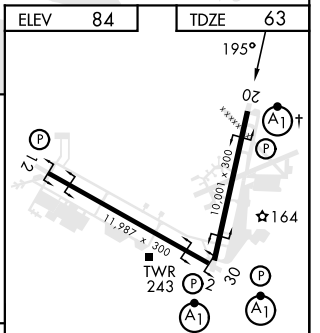
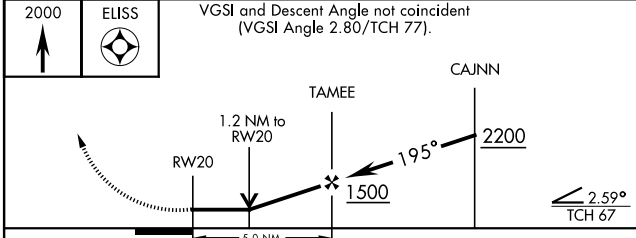
APCH CRS	Rwy ldg	10,001
195°	TDZE	63
	Arpt Elev	84

RNP APCH	ALSIF-1	MISSED APPROACH: Climb straight ahead to 2000 to ELISS and hold.
* When ALS inop, increase CAT AB RVR to 55 and vis to 1 mile, CAT CDE vis to 1¼ miles.		

ATIS ★	APP CON	TOWER	GND CON	CLNC DEL
134.625 273.5	125.1 281.45 271°-089° 132.1 360.6 090°-270°	118.2 353.65	121.8 335.8	127.7 377.2



ELEV	84	TDZE	63
------	----	------	----



CATEGORY	A	B	C	D	E
LNNAV MDA *	500/24 437 (500-½)		500/40 437 (500-¾)		
CIRCLING	580-1 496 (500-1)		680-1½ 596 (600-1½)	680-2 596 (600-2)	

HIRL all rwys
† Rwy 20 apch lgt 1500' nonstandard.

VALPARAISO, FLORIDA

30°29'N-86°32'W

EGLIN AFB/DESTIN-FT WALTON BEACH (KVPS)

Orig 15JUN23

RNAV (GPS) Z RWY 20

SE-3, 18 APR 2024 to 16 MAY 2024

SE-3, 18 APR 2024 to 16 MAY 2024