

VALPARAISO, FLORIDA

TACAN Z RWY 2

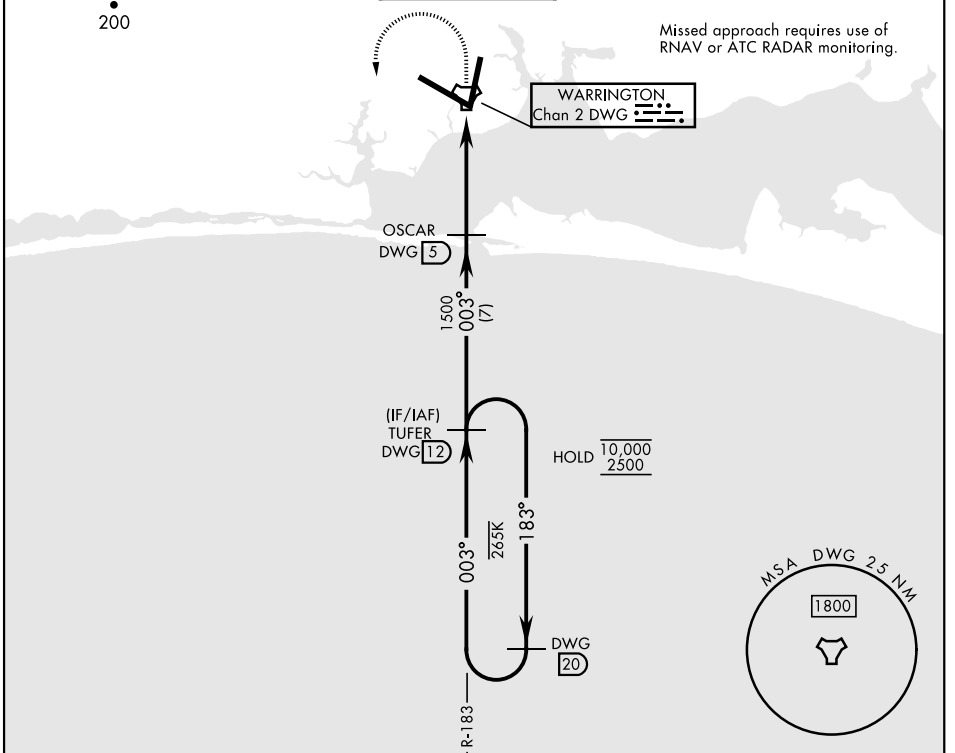
TACAN DWG Chan 2	APCH CRS 003°	Rwy Idg 10,001 TDZE 59 Arprt Elev 84	AL-436 [USAF]	EGLIN AFB/DESTIN-FT WALTON BEACH (KVPS)
---------------------	------------------	---	---------------	---

* When ALS inop, increase CAT AB RVR to 55, vis to 1 mile, CAT CDE RVR to 60, vis to 1 1/8 miles.

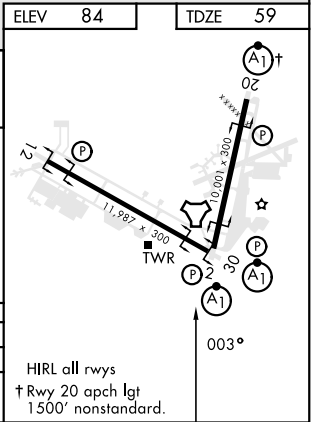
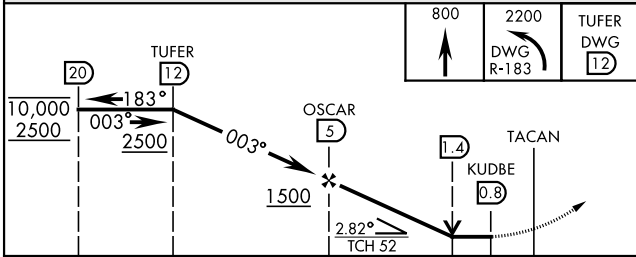
ALSF-1

MISSED APPROACH: Climb to 800 then climbing left turn to 2200 direct DWG R-183/12 DME (TUFER) and hold.

ATIS * 134.625 273.5	APP CON 125.1 281.45 271°-089° 132.1 360.6 090°-270°	TOWER 118.2 353.65	GND CON 121.8 335.8	CLNC DEL 127.7 377.2
-------------------------	--	-----------------------	------------------------	-------------------------



EMERG SAFE ALT 100 NM 3500	ELEV 84	TDZE 59
----------------------------	---------	---------



CATEGORY	A	B	C	D	E
S-02 *	460/40		401	(400-3/4)	
☐ CIRCLING	580-1	496 (500-1)	680-1 1/2 596 (600-1 1/2)	680-2	596 (600-2)

VALPARAISO, FLORIDA 30°29'N-86°32'W EGLIN AFB/DESTIN-FT WALTON BEACH (KVPS)

Orig 29DEC22

TACAN Z RWY 2

SE-3, 18 APR 2024 to 16 MAY 2024

SE-3, 18 APR 2024 to 16 MAY 2024