

TACAN Z RWY 20

TACAN DWG Chan 2	APCH CRS 202°	Rwy ldg 10,001 TDZE 63 Arprt Elev 84
----------------------------	-------------------------	---

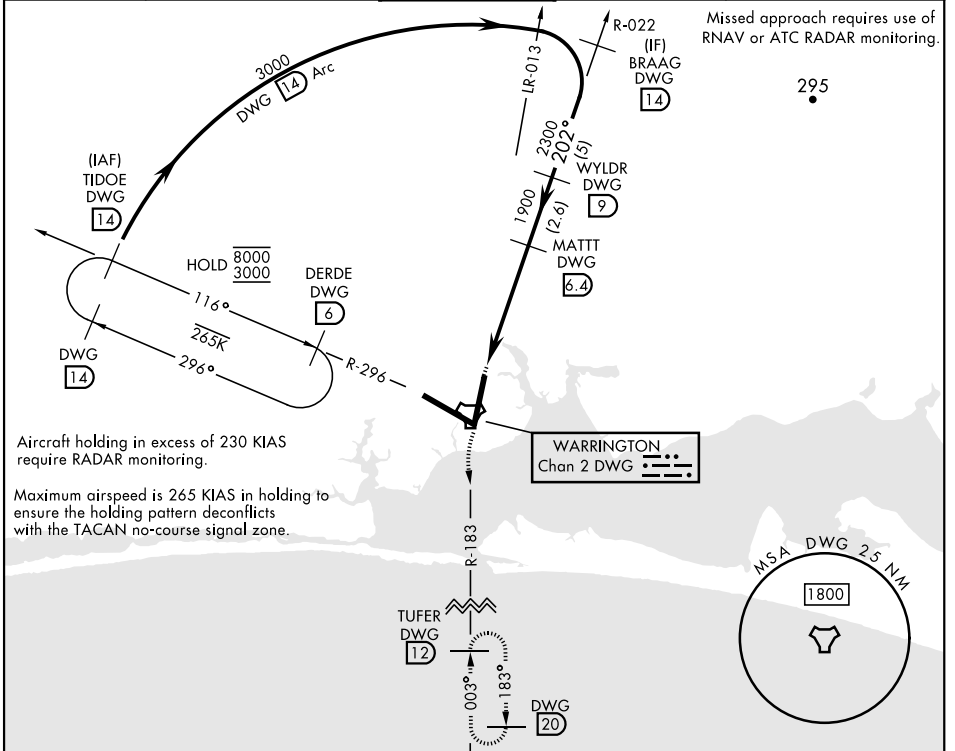
AL-436 [USAF] EGLIN AFB/DESTIN-FT WALTON BEACH (KVPS)

* When ALS inop, increase CAT AB RVR to 55 and vis to 1 mile, CAT CDE vis to 1 1/2 miles.

ALSF-1 

MISSED APPROACH: Climbing left turn to 2200 on DWG R-183 to 12 DME/TUFER and hold.

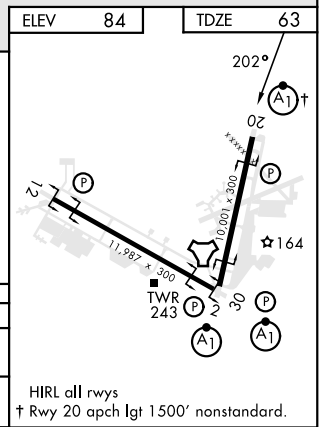
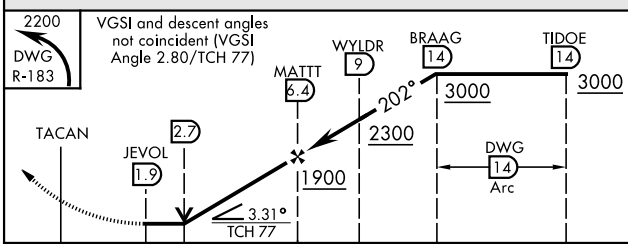
ATIS ★ 134.625 273.5	APP CON 125.1 281.45 271°-089° 132.1 360.6 090°-270°	TOWER 118.2 353.65	GND CON 121.8 335.8	CLNC DEL 127.7 377.2
--------------------------------	--	------------------------------	-------------------------------	--------------------------------



Aircraft holding in excess of 230 KIAS require RADAR monitoring.

Maximum airspeed is 265 KIAS in holding to ensure the holding pattern deconflicts with the TACAN no-course signal zone.

EMERG SAFE ALT 100 NM 3500



CATEGORY	A	B	C	D	E
S-20 *	520/24 457 (500-1/2)		520/45 457 (500-3/4)		
CIRCLING	580-1 496 (500-1)		680-1 1/2 596 (600-1 1/2)	680-2	596 (600-2)

TACAN Z RWY 20

SE-3, 18 APR 2024 to 16 MAY 2024

SE-3, 18 APR 2024 to 16 MAY 2024