

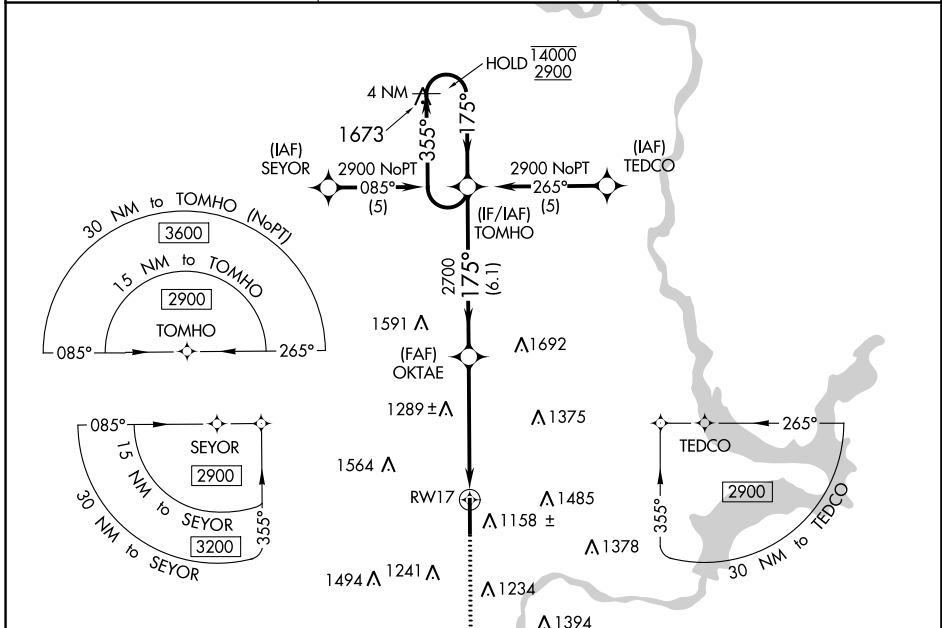
WAAS CH <b>50408</b> <b>W17A</b>	APP CRS <b>175°</b>	Rwy Idg <b>7201</b> TDZE <b>1004</b> Apt Elev <b>1009</b>
--	------------------------	---

# RNAV (GPS) RWY 17

PONCA CITY RGNL (PNC)

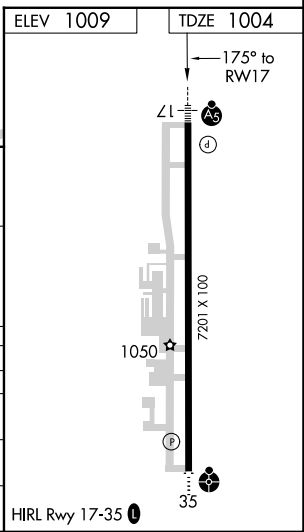
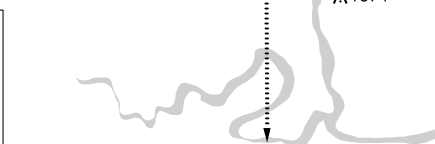
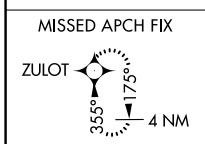
RNP APCH - GPS.	MALSR	MISSED APPROACH: Climb to 2700 direct ZULOT and hold.
<p>▼ For uncompensated Baro-VNAV systems, LNAV/VNAV NA below -16°C or above 54°C. For inop ALS increase LPV visibility all Cats to 7/8 SM.</p> <p>▲</p>		

ASOS <b>134.075</b>	KANSAS CITY CENTER <b>127.8 319.1</b>	UNICOM <b>123.0 (CTAF) 0</b>
------------------------	--	---------------------------------



SC-1, 18 APR 2024 to 16 MAY 2024

SC-1, 18 APR 2024 to 16 MAY 2024



CATEGORY	A	B	C	D
LPV DA		1279-1/2	275 (300-1/2)	
LNAV/VNAV DA		1330-1/2	326 (400-1/2)	
LNAV MDA	1540-1/2	536 (600-1/2)	1540-1	536 (600-1)
CIRCLING	1540-1 531 (600-1)	1580-1 571 (600-1)	1800-2 1/4 791 (800-2 1/4)	1880-2 3/4 871 (900-2 3/4)

GP 3.00° TCH 48	2700	ZULOT
--------------------	------	-------